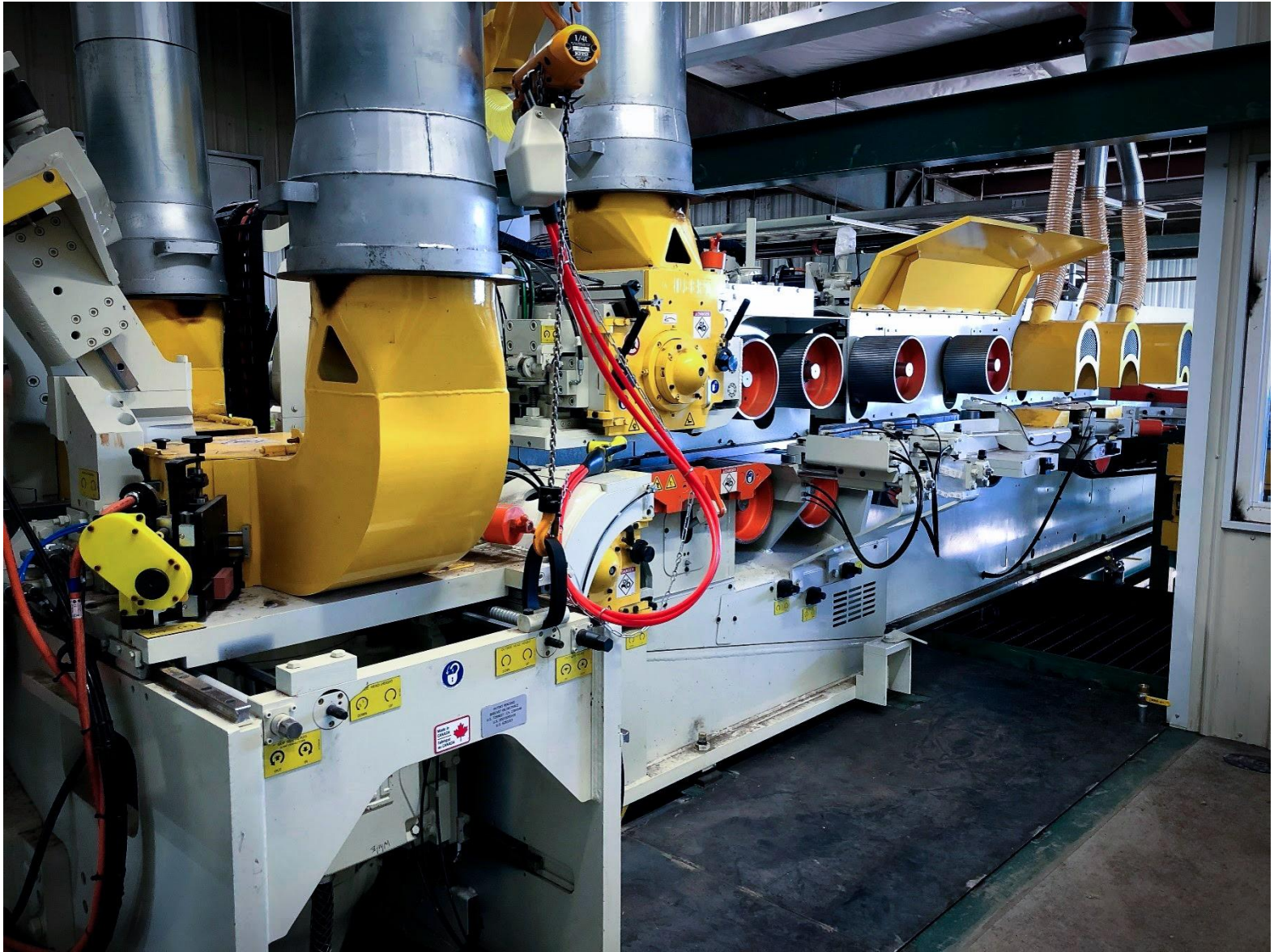


# UPGRADE PARTS FOR YOUR GILBERT PLANER

**GILBERT**



# UPGRADE PARTS FOR YOUR GILBERT PLANER

Take advantage of Gilbert's state-of-the-art technology to upgrade your planer. Gilbert planer parts can be installed to increase planer productivity and efficiency.

## Safety, Efficiency and Automation Upgrades

- Heavy Duty Top Roll System with Remote-Controlled Height Adjustment **(P. 4)**
- Bushing with cat wiper **(p. 6)**
- Gilbert GRIP System To Replace Air Cylinders**(P.7)**
- New Balancer **(P. 8)**
- Automatic Cutterhead Positioning System **(P. 9)**
- Vibration And Temperature Monitoring System **(P. 11)**
- Temperature monitoring system **(P. 12)**
- Remote-Controlled Top Head Pressure Plate **(P. 13)**
- Safety Remote Top and Bottom Head Jointers **(P. 14)**
- Upgrade for Top and Bottom Head Jointers **(P. 15)**
- Safety Remote Side Head Jointers **(P. 16)**
- Semi-Automatic Adjustment of After-Cut Shoes **(P. 17)**
- Remote-Controlled 1st Bottom Roll Adjustment **(P. 18)**
- Automatic Adjustment Of Hold Over Rolls **(P. 19)**
- Safety Side Head Jointer **(P. 20)**
- Electronic Pressure Controllers **(P. 21)**
- Quick Release on Airbags **(P. 22)**

## Heavy-Duty Upgrades

- Double Jack For Bottom Heads **(P. 24)**
- Improved Chip Breakers **(P. 25)**
- Wear Parts **(P. 26)**
- Heavy Duty Quick-Open Side Press Roll **(P. 27)**
- Hold Down Shoes Between Side Heads **(P. 28)**
- Cooling System **(P. 29)**
- Top Roll Assembly Collar **(P. 30)**



# UPGRADE PARTS FOR YOUR GILBERT PLANER

Take advantage of Gilbert's state-of-the-art technology to upgrade your planer. Gilbert planer parts can be installed to increase planer productivity and efficiency.

## Feed Table Upgrades

- Heavy-Duty Feed Table and Bridge **(P. 32)**
- Entry Power Bridge Modification **(P. 33)**
- Third Pineapple **(P. 34)**
- Fourth Pineapple **(P. 35)**
- Retractable Arm for Bridge **(P. 36)**
- Clean-Up Brush **(P. 37)**
- Pineapples **(P. 38)**
- Rolls **(P. 40)**

## Cutterheads

- GILBERT Side Heads **(P. 45)**
- Hydro-Grip Triple Pattern Side Heads **(P. 46)**
- Hydro-Grip Top and Bottom Heads **(P. 47)**
- Key Knife Cutterheads **(P. 48)**
- Realignment Jig for Top and Bottom Heads **(P. 49)**
- Top and Bottom Head Handling Tool **(P. 51)**

## Outfeed Line

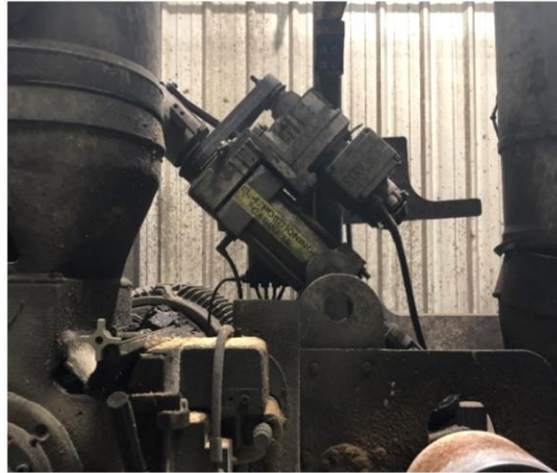
- Profile / Splitting Module **(P. 53)**
- Slowdown Belt **(P. 54)**
- Slowdown Brush **(P. 55)**
- Outfeed Belt **(P. 56)**
- Outfeed Bridge **(P. 57)**

## Gilbert Line of Planers

- S-Series Planer **(P. 59)**
- Moulder Planer **(P. 60)**
- Timber Power Planer **(P. 61)**

# HEAVY DUTY TOP ROLL SYSTEM WITH HEIGHT ADJUSTMENT TO RETROFIT ON PLANERS USING AIR CYLINDERS

BEFORE



AFTER



- New heavy-duty and compact design to improve performance;
- Increases traction, really helps feeding wide products;
- Adjusts automatically for all different thicknesses;
- All recipes are saved in setworks. For example : decking 5/4 to 6x6 in just a few seconds;
- Considerably reduces maintenance





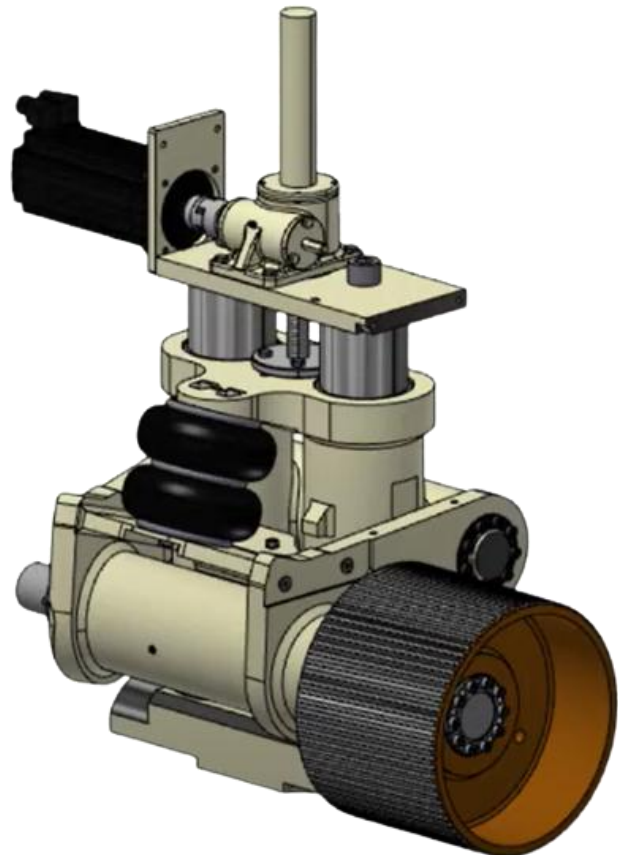
# HEAVY DUTY TOP ROLL SYSTEM WITH HEIGHT ADJUSTMENT TO RETROFIT ON PLANERS USING AIR CYLINDERS



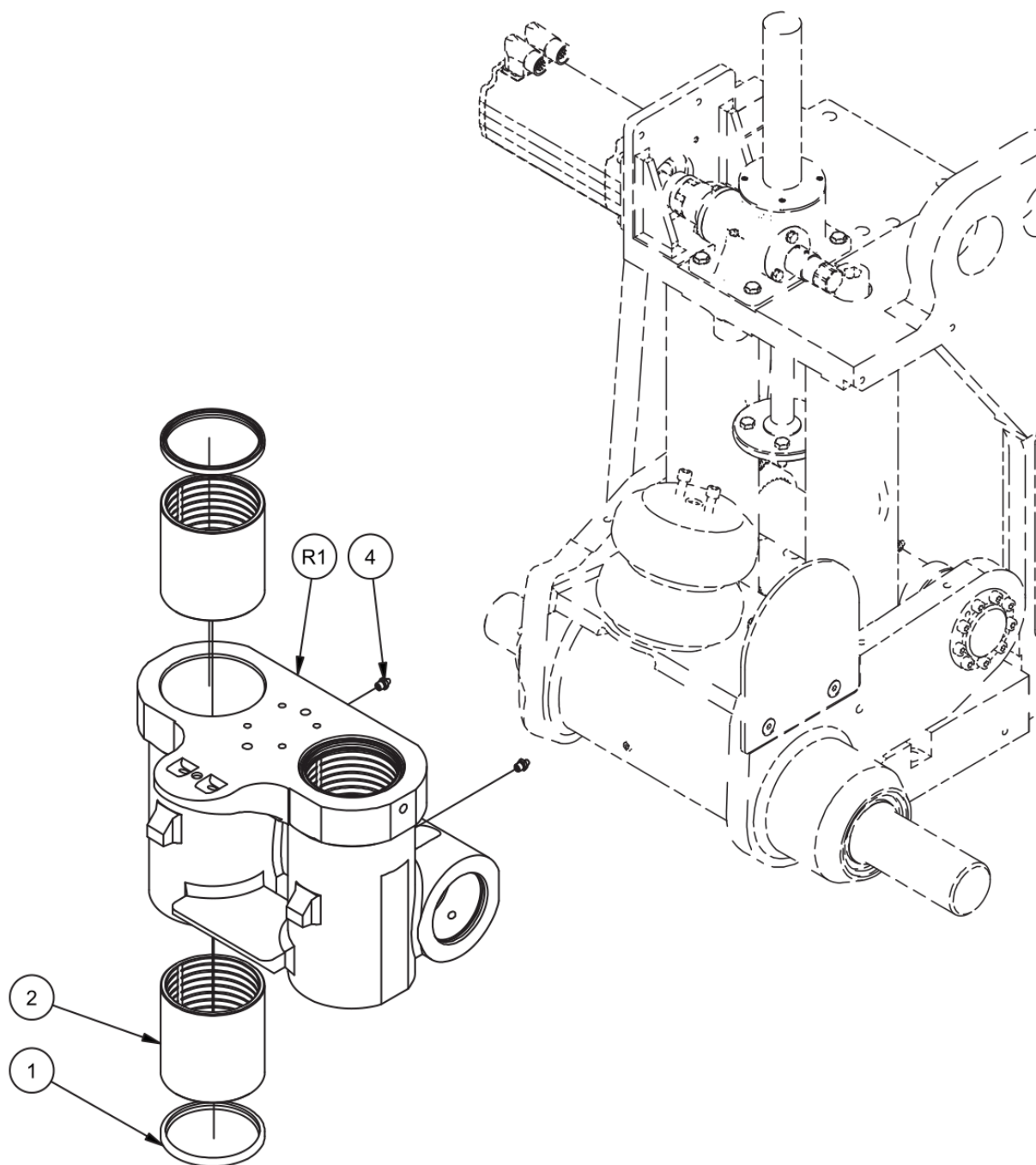
SEE IT IN REAL TIME



[Russellville Infeed with Third Pineapple](#)



# NEW UPGRADE FOR CUSTOMERS WHO HAVE THE HEAVY DUTY TOP ROLL UPGRADE



- New designed bushing with heavy duty wipers.
- (CAT excavator wipers)



# GRIP SYSTEM TO REPLACE AIR CYLINDERS

## Gilbert Roll Intelligent Positioning System



Increase piece count without running faster

Reduce gap, gain production

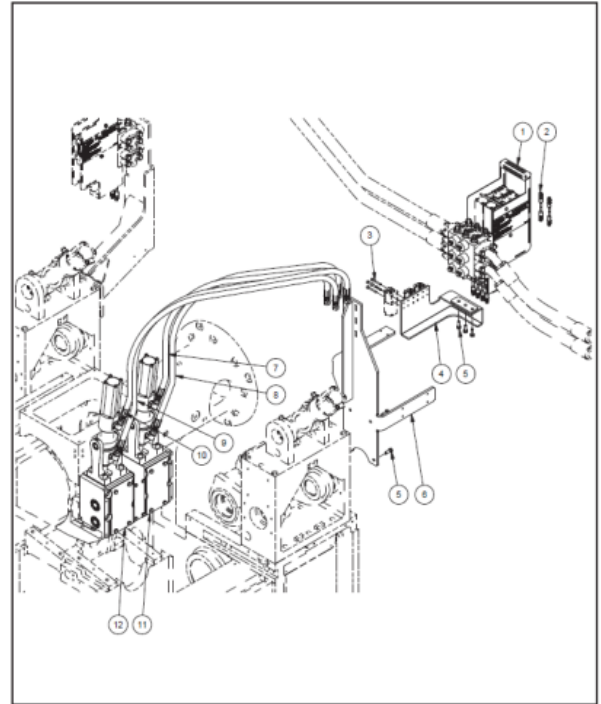
- System to replace air cylinders for all top feed table and planer rolls;
- Easy to install on GILBERT planers with a nice bolt on pattern, **no welding required**;
- It moves the rolls to position and hold contact on the board;
- User friendly HMI for recipe selection and calibration;
- Saved recipes for height adjustment;
- **Increased traction**;
- **Increase life expectancy of the mechanical components**;
- Hydraulic system with servo valves.

# NEW UPGRADE FOR GRIP SYSTEM

Grip system can now be installed on top head chipbreakers

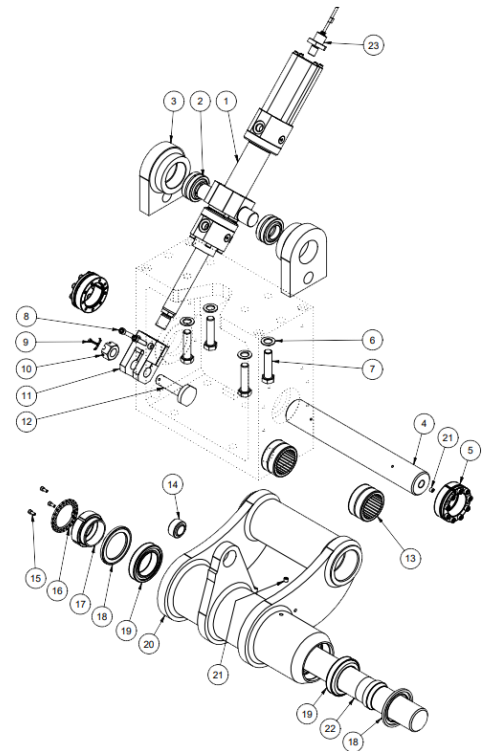
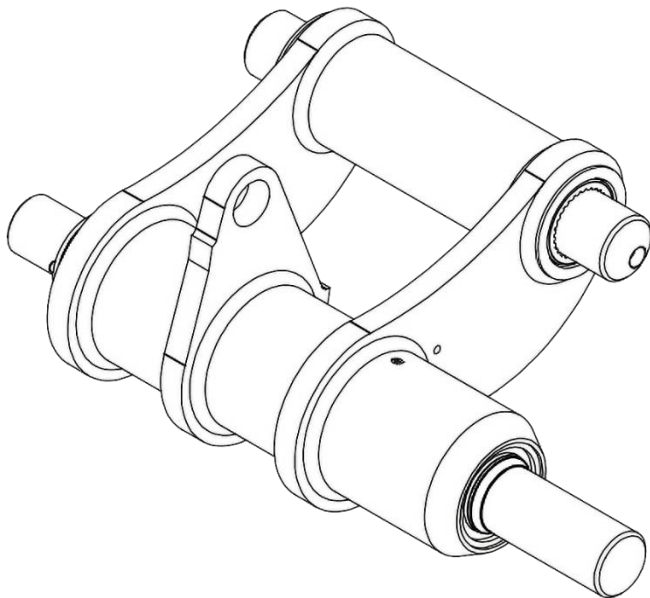


GILBERT



AJOUT DE PIEDS PRESSEURS "GRIPS" / "GRIPS" CHIP BREAKERS ASSEMBLY 8818543 000 REV. 00

# NEW BALANCER



- With the GRIP system we recommend changing all the lower balancers.
- Built with a new bearing design for less wear;
- Greaseable bearings.



# AUTOMATIC CUTTERHEAD POSITIONING SYSTEM RETROFIT FOR OLDER MODEL PLCS



- Controls can be done with **Schneider or Allen Bradley**. PLC and servomotors;
- Quick release system and immediate return to production after wood jamming;
- System permits to predetermine all manufactured products
- All recipes are saved;
- Changes in production are possible and very quickly (egg: 2x3 to 2x6).



## *iPad Option*

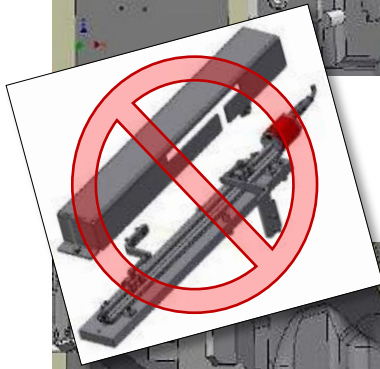
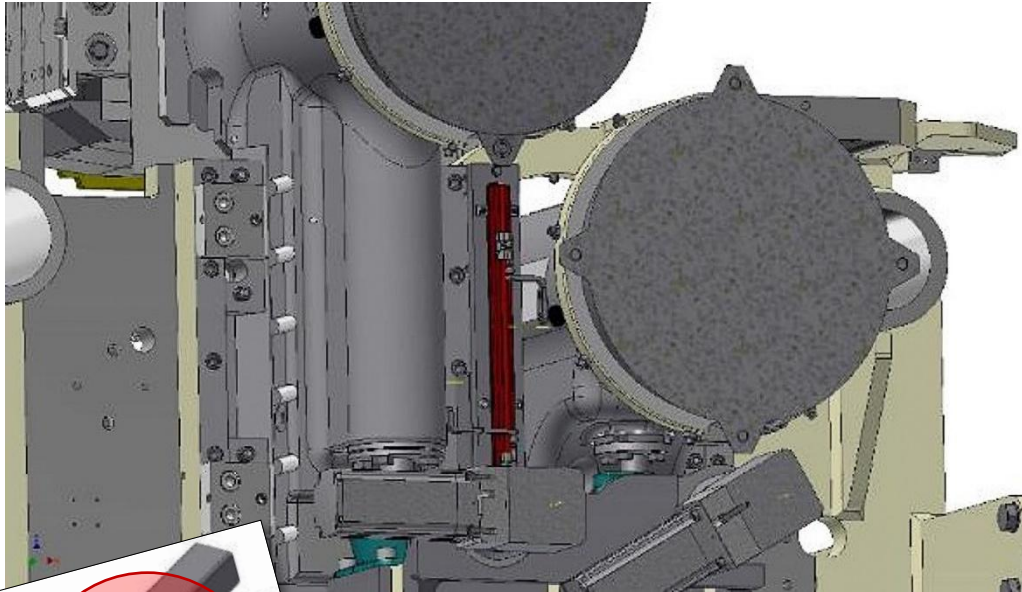
- Make adjustments using an iPad from anywhere in the mill.



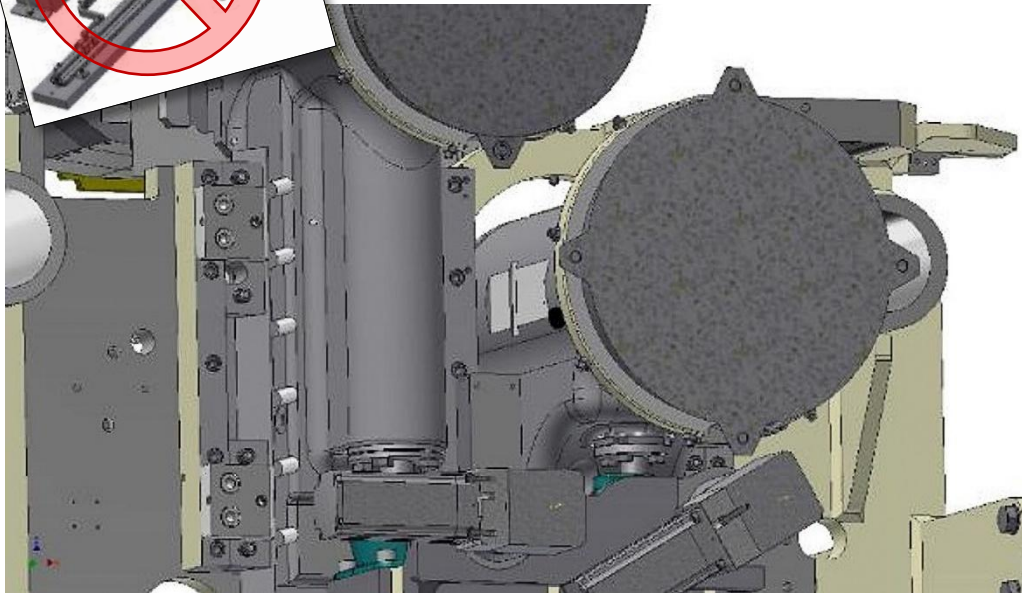
[Watch on YouTube](#)

# AUTOMATIC CUTTERHEAD POSITIONING SYSTEM

Replace Temposonics by Rotary Encoders



TEMPOSONICS

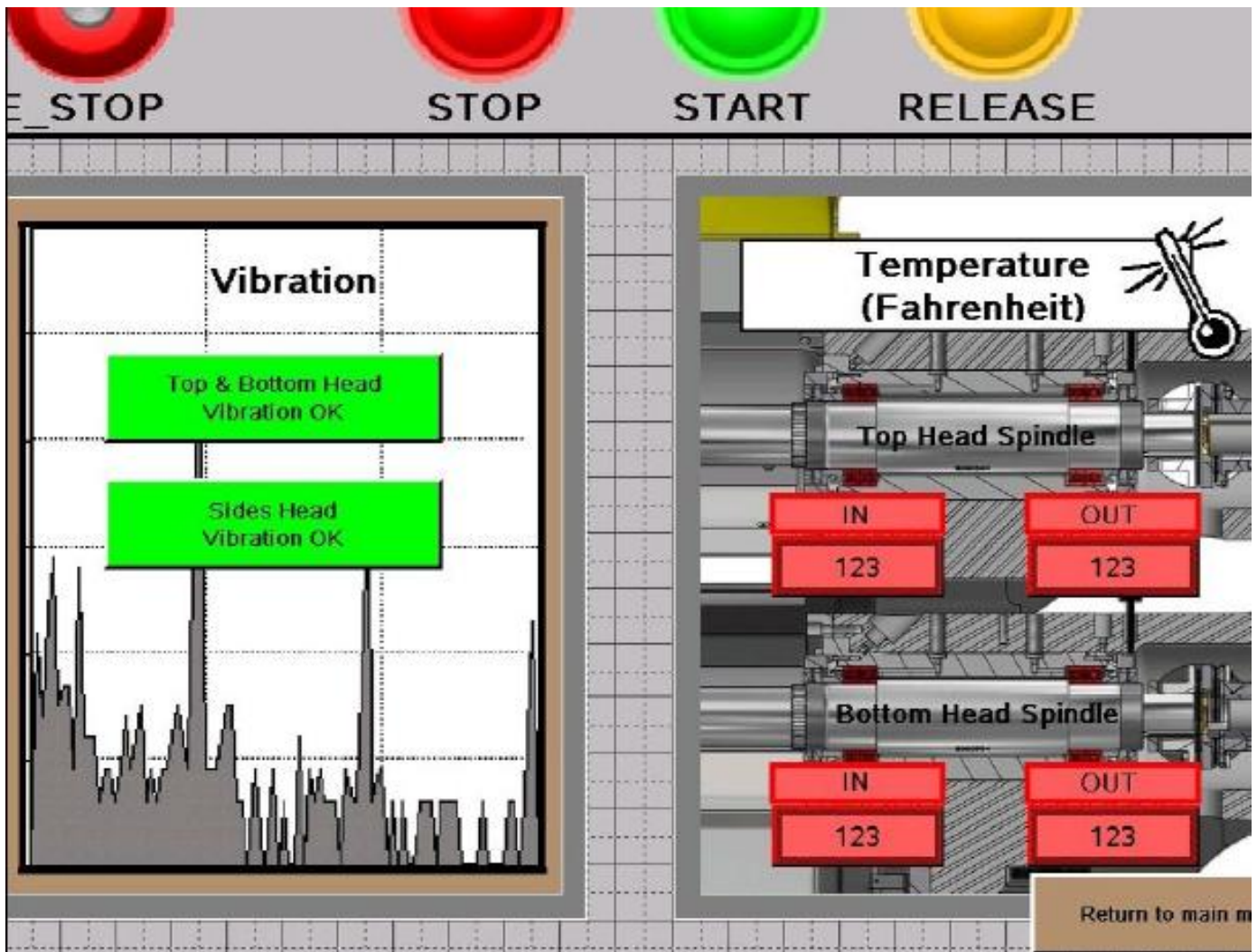


NEW SERVO MOTORS WITH ENCODERS

- Replace servo motors on 4 cutterheads to remove Temposonics;
- Less maintenance.

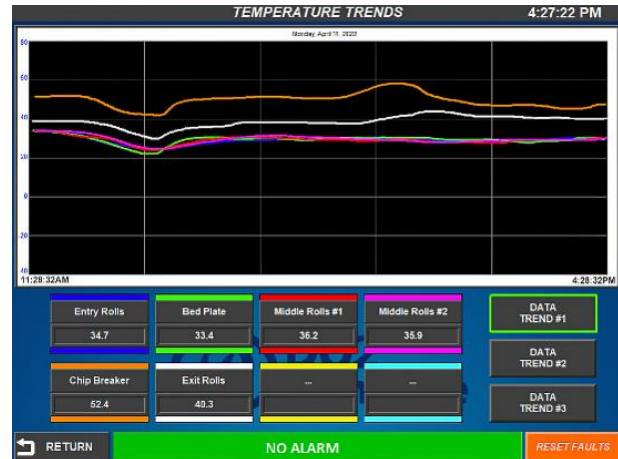
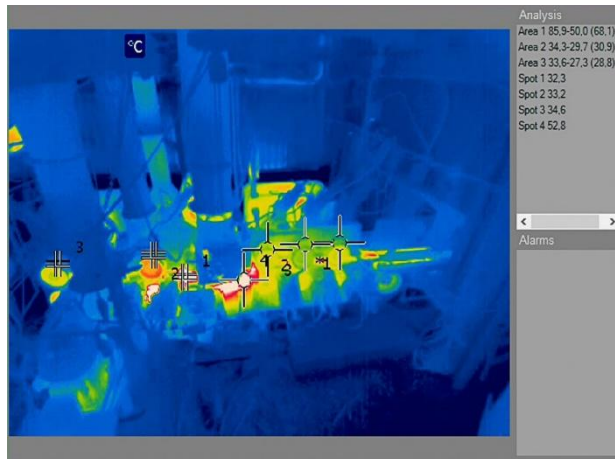


# GILBERT PLANNER VIBRATION AND TEMPERATURE MONITORING SYSTEM



- Installed directly on spindles;
- When temperature goes over the given limit, the value becomes red;
- Detect unusual vibration and heat to alert of a potential issue;
- Possibility of interlocking the alarm output with another PLC;
- Helps to plan long term maintenance;
- Alarm on screen.

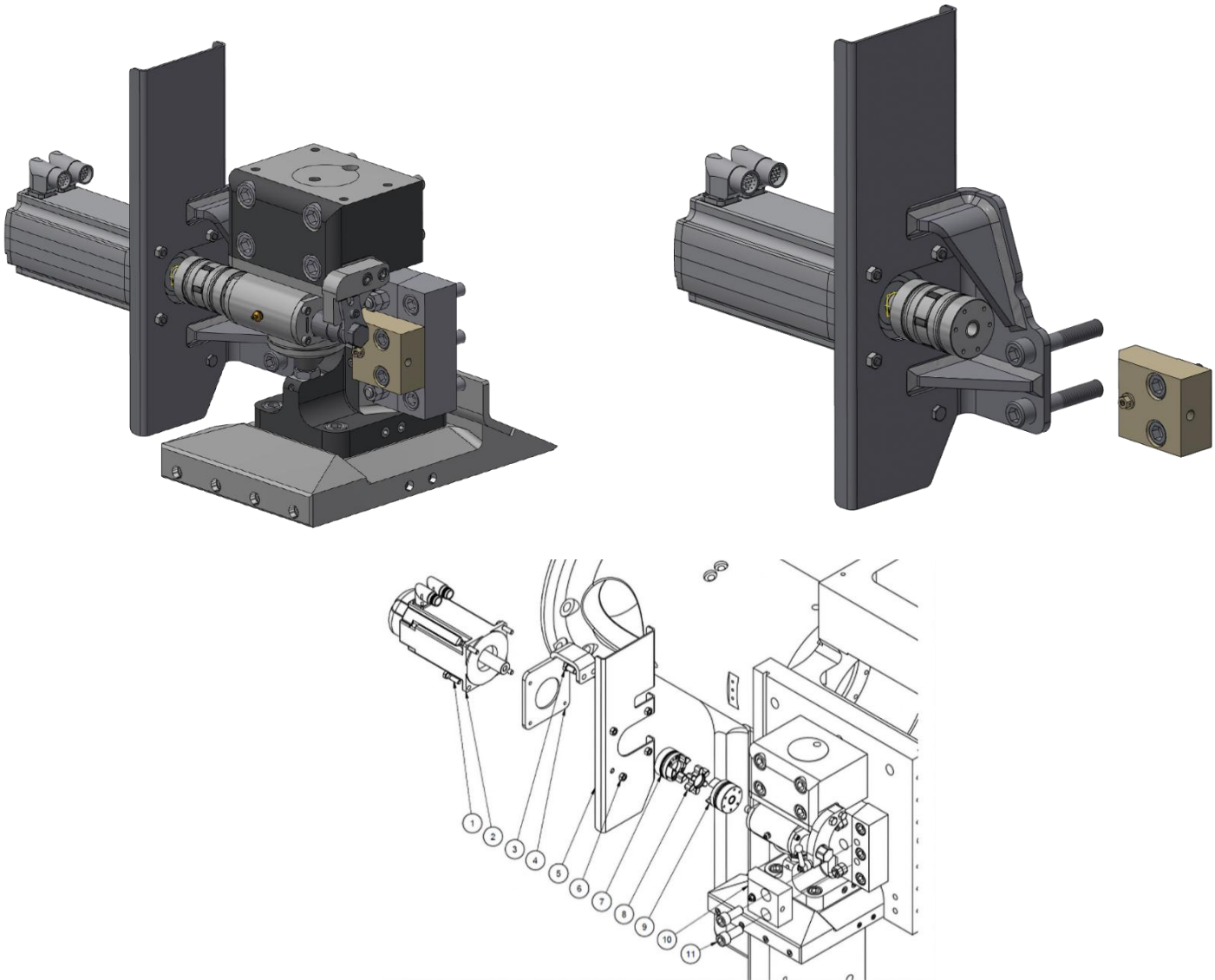
# GILBERT PLANNER TEMPERATURE MONITORING SYSTEM TO PREVENT FIRES OR OVERHEATING



- Thermal imaging cameras (FLIR) to monitor hotspots;
- Prevents overheating and premature wear;
- Includes a 15" touchscreen, mini-computer, thermal cameras & audiovisual alert;
- Programmable for a specific spot or a zone e.g : guide bar or bed plate
- Can be entirely stand-alone or connected to the mill PLC;
- Provides temperature graphs (°C or °F) in real-time readings and keeps a 24h history;
- Fire hazard is now much more controlled.



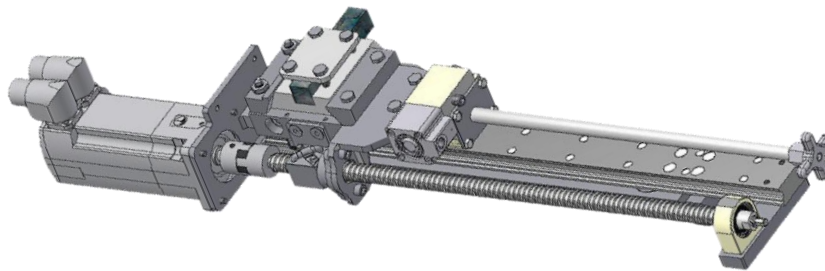
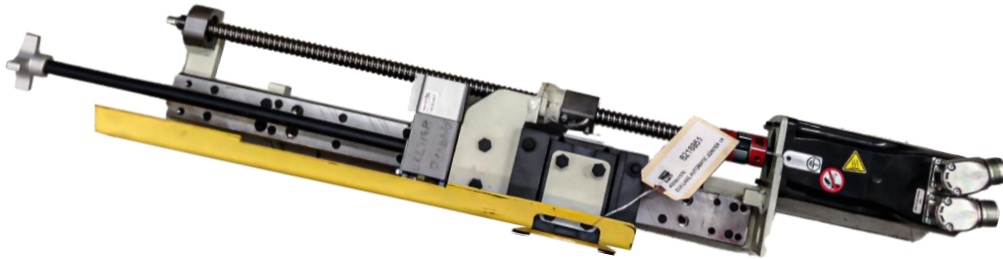
# REMOTE-CONTROLLED TOP HEAD PRESSURE PLATE



- Safer, **keep the operator out of the planer room;**
- Add a servo motor to planer's pressure plate for perfect precision;
- Controlled by the Gilbert Remote Positioning System;
- Increased efficiency;
- The system can be used remotely right after jointing the cutterheads;
- Includes servo motor, bracket and drive.

# SAFETY REMOTE TOP AND BOTTOM HEAD JOINTERS

## Semi-Automatic Top & Bottom Head Jointers



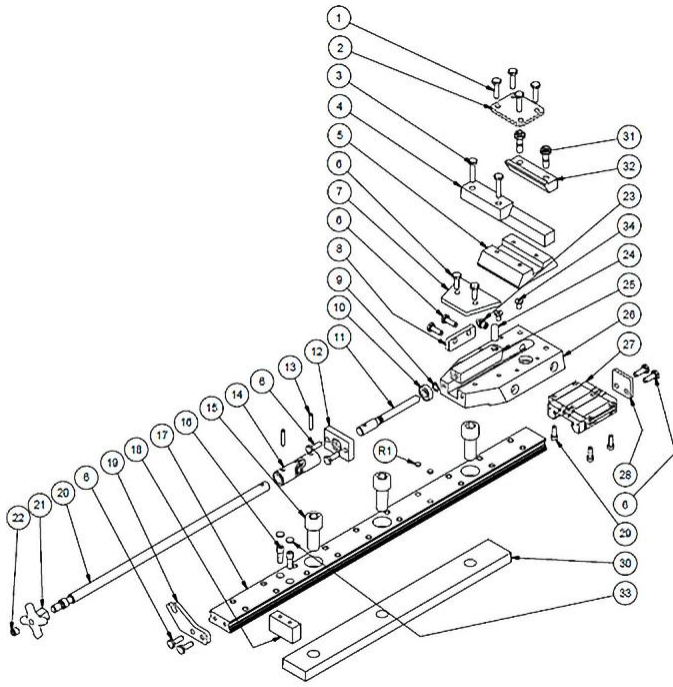
- Safer, **keeps the operator out of the planer room;**
- Noticeably increased knife lifetime;
- Increase the quality of the finished wood;
- Improve jointing;
- Very precise system;
- Easy to use;
- Can be use in semi-automatic or manual mode.



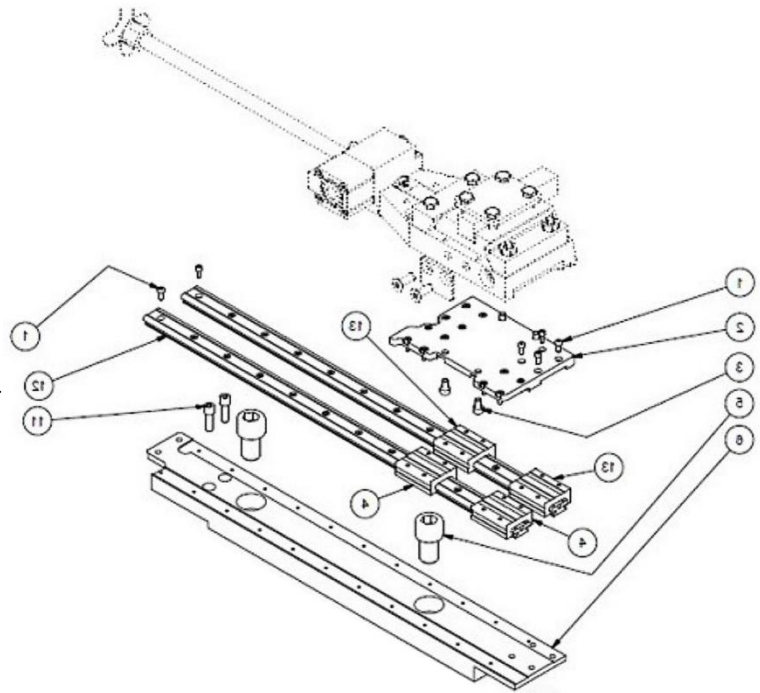
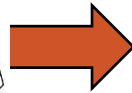
[Watch on YouTube](#)

# UPGRADE FOR TOP AND BOTTOM HEAD JOINTERS

## Upgrade for Existing Top & Bottom Head Jointers



**OLD DESIGN**



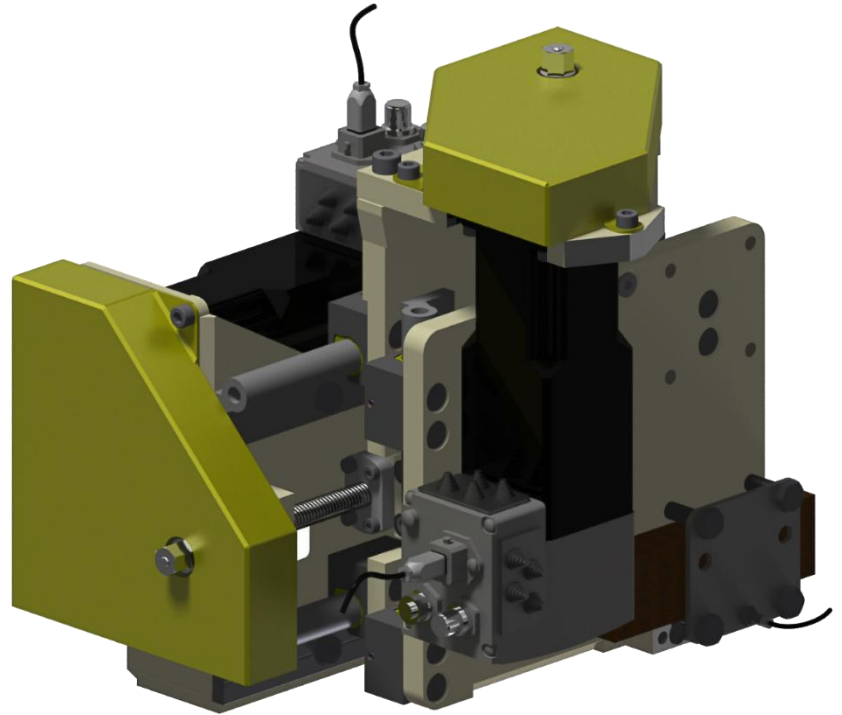
**NEW DESIGN**

- Double bearing track;
- Ceramic bearing;
- Less maintenance.



# SAFETY REMOTE SIDE HEAD JOINTERS

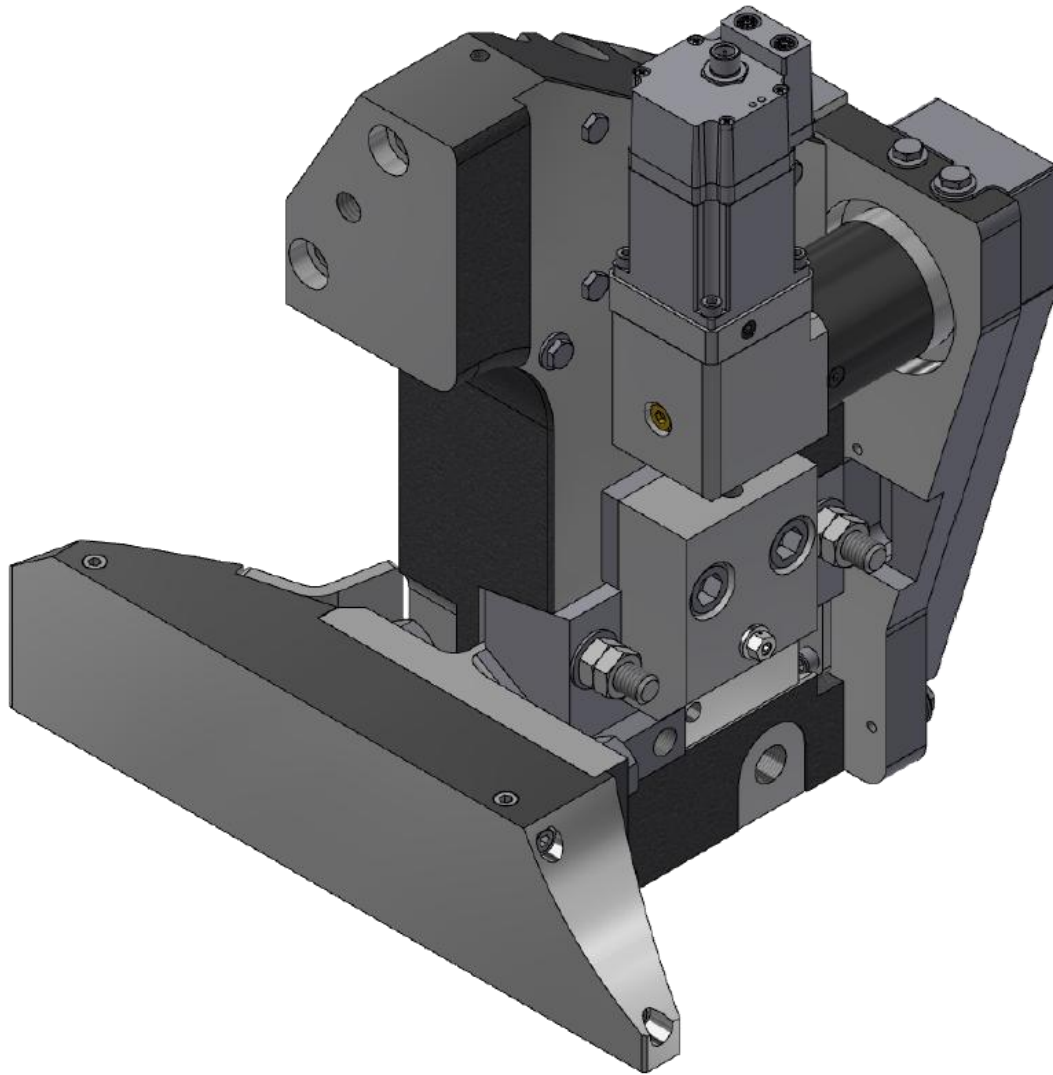
## Remote controlled Side Head Jointers



- Safer, **keeps the operator out of the planer room;**
- Noticeably increased knife lifetime;
- Very rapid payback on knives;
- Increase the quality of the finished wood;
- Knives are jointed with uniformity and with greater accuracy;
- Keep perfect radius all the time;
- Very precise set up;
- Reduced grinding time;
- 2 models available:
  - 2 axis (Vertical and horizontal)
  - 1 axis (Horizontal only)

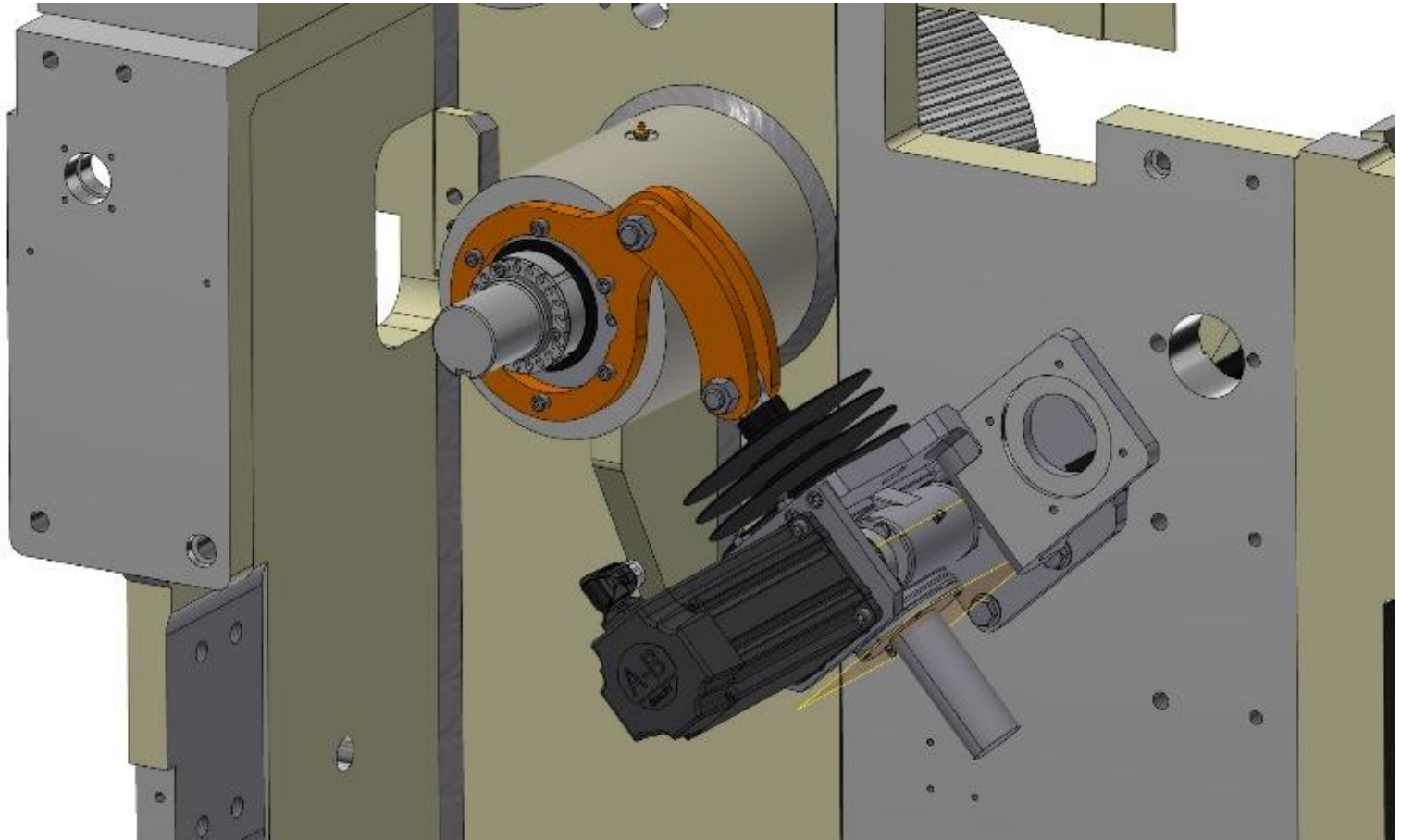
# SEMI-AUTOMATIC ADJUSTMENT OF AFTER-CUT SHOES

---



- Safer, **keep the operator out of the planer room;**
- Semi-Automatic adjustment of the two (2) after-cut shoes;
- Servo motors installed
- Same function as the pressure plate after the top head;
- Jointing of the side heads is now done from outside of the planer room. You can then adjust the after-cut shoe according to new cutting circle from outside as well;

# REMOTE-CONTROLLED FIRST BOTTOM ROLL ADJUSTMENT

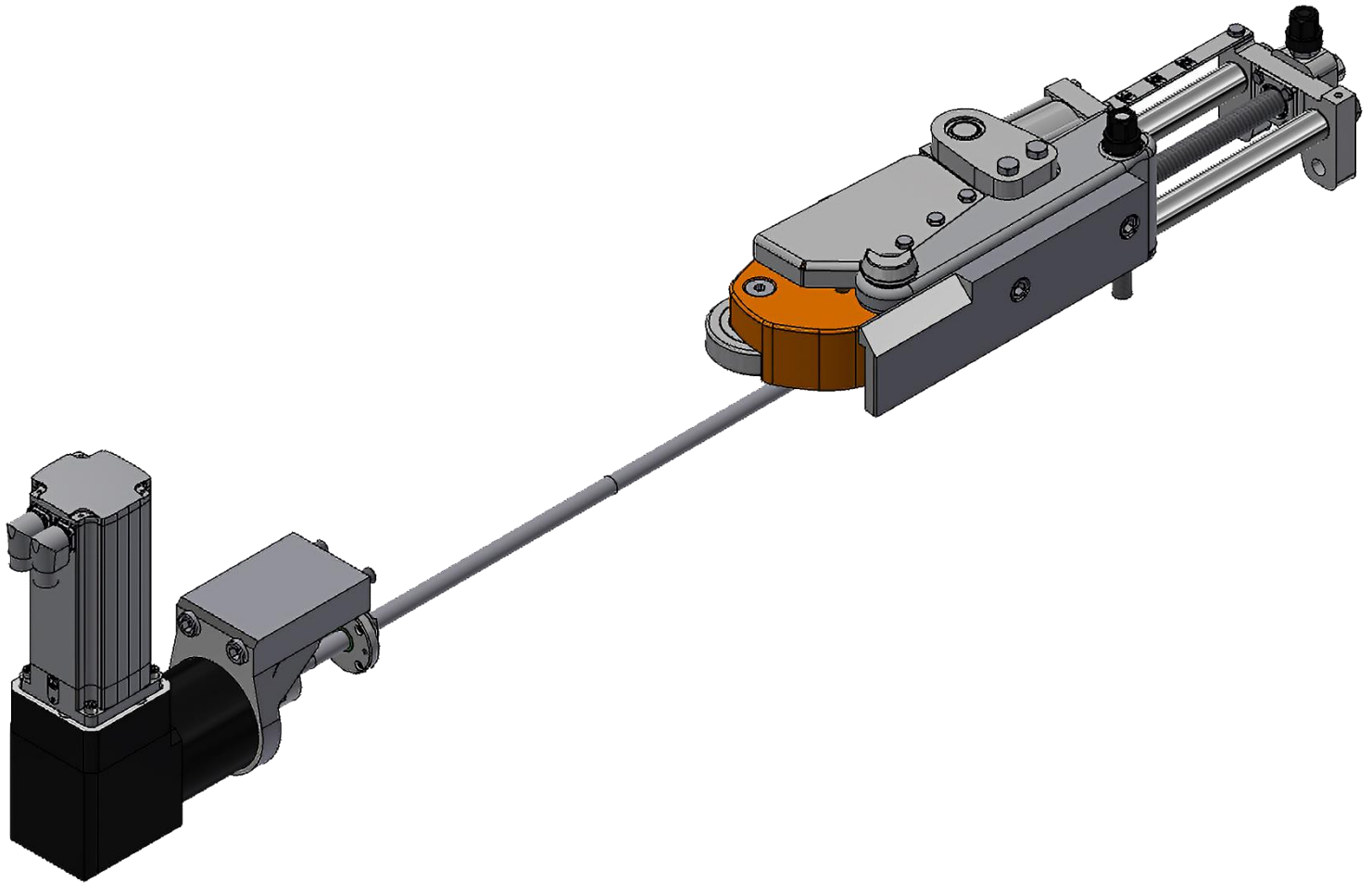


## For GILBERT 6 Roll Planers

- Safer and increases efficiency;
- A servo motor is installed and is connected to the Gilbert controller to adjust the infeed bottom roll;
- Controlled by the Gilbert Remote Positioning System;
- Always see bottom roll position on positioning system screen.

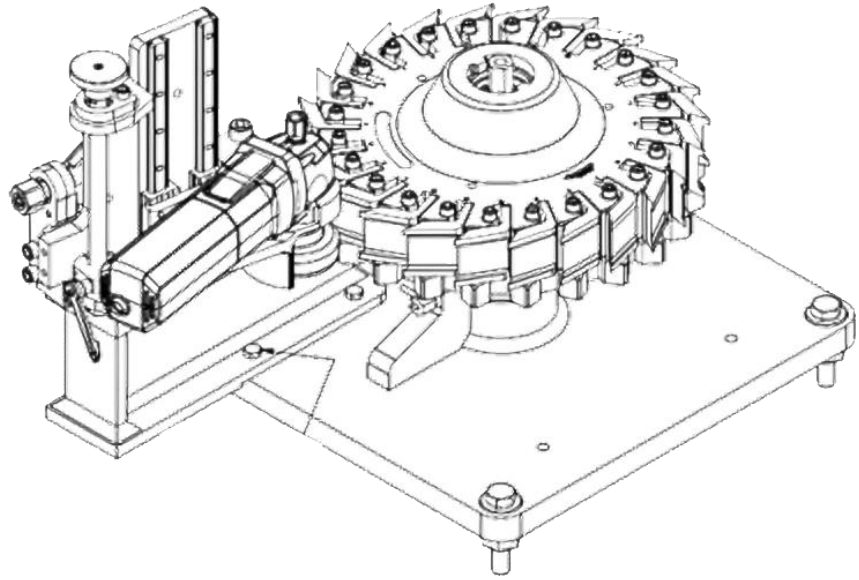


# AUTOMATIC WIDTH ADJUSTMENT OF HOLDOVER ROLLS

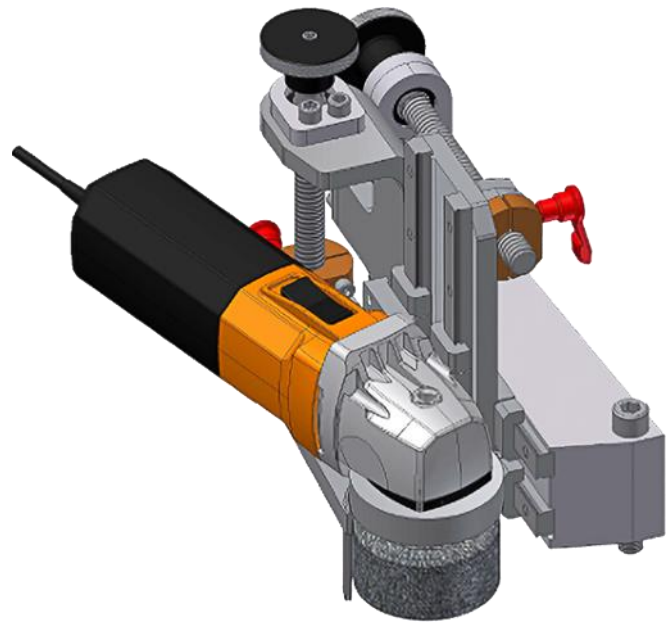


- Save time changing from one width to another
- Automatic adjustments for changing from one width to another;
- A servo motor is installed and is connected to the Gilbert controller;
- All width adjustments saved in the Gilbert positioning system.

# SAFETY SIDE HEAD JOINTER

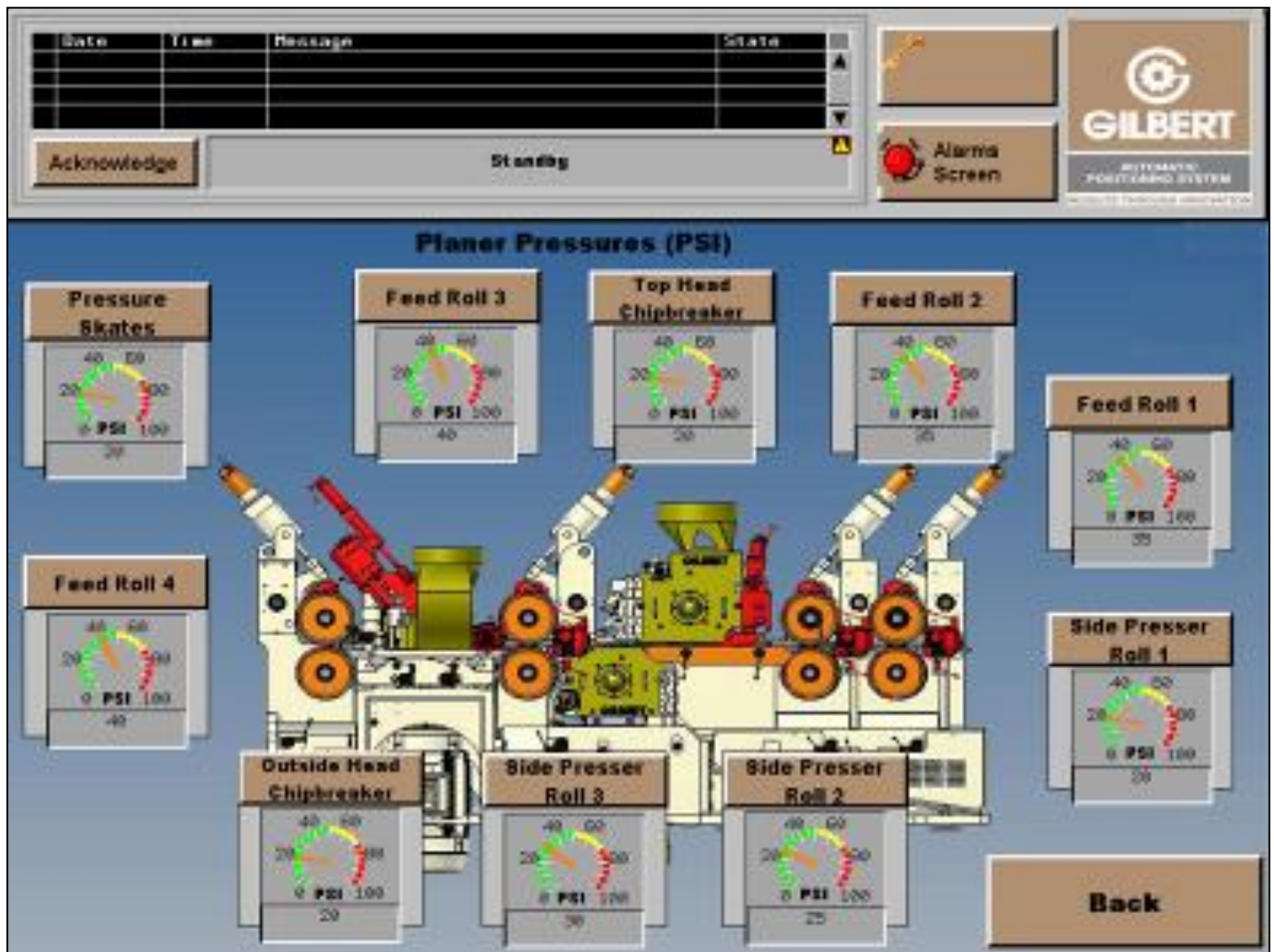


Instead of jointing directly on the planer, **it is possible to install the jig in the grinding room.** Joint the knives in the grinding room and install the heads in the planer afterwards.



- Very precise set up;
- Keep perfect radius all the time;
- Reduced grinding time;
- Noticeably increased knife lifetime;
- Increase the quality of the finished wood;
- Very rapid payback on knives.
- Joint knives when motor is stopped and locked out, much safer for operator;
- Knives are jointed with uniformity and with greater accuracy;

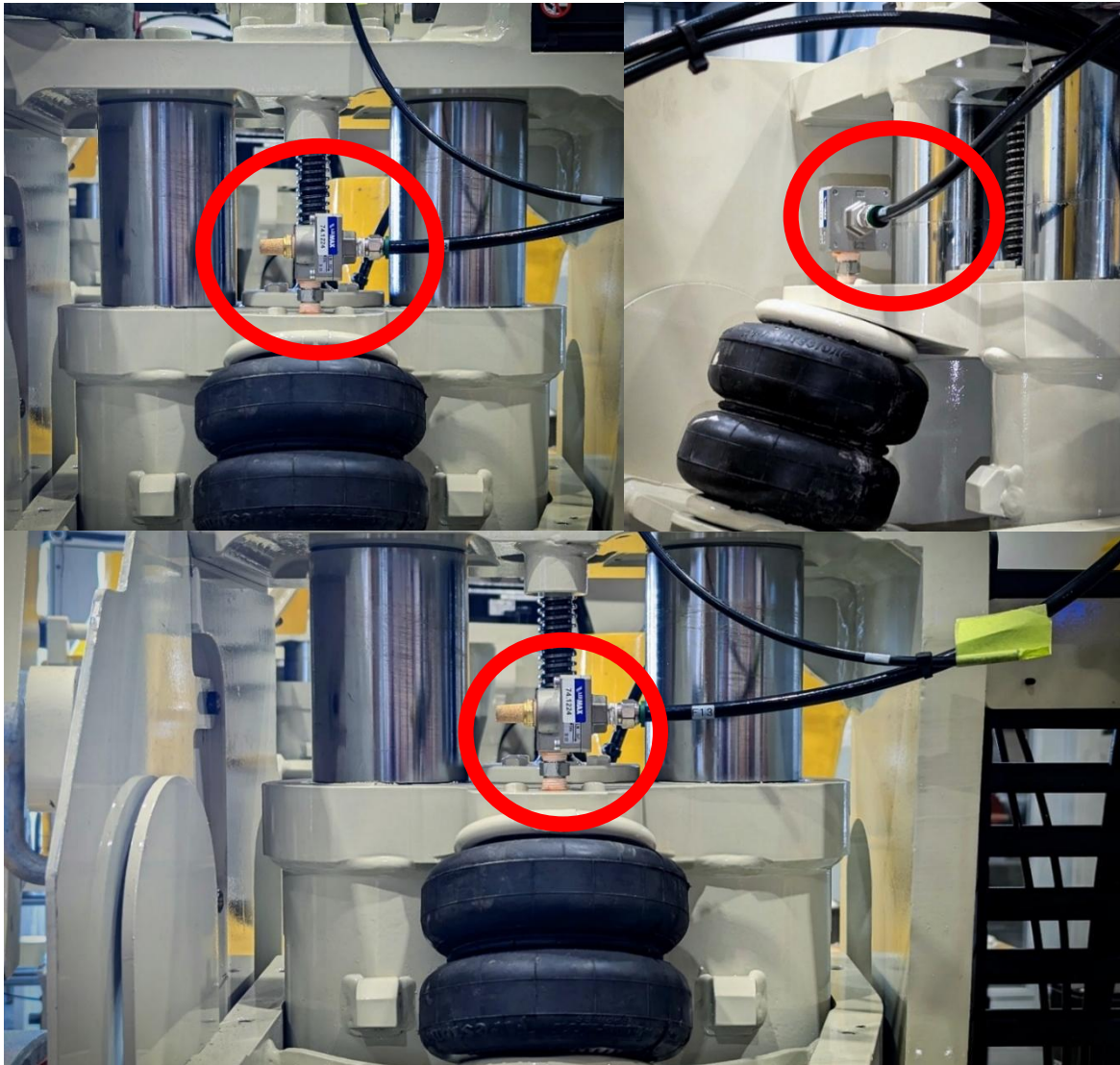
# ELECTRONIC PRESSURE CONTROLLERS



- Air bag automatic pressure adjustment according to the production;
- Electronic valves;
- Automate all the functions which used to be manual;
- Manifold block with the proportional electronic valves assembled;
- All pneumatic adaptors;
- Fixing plate for installation of valves in the air console;
- Installation drawings and pneumatic schema.



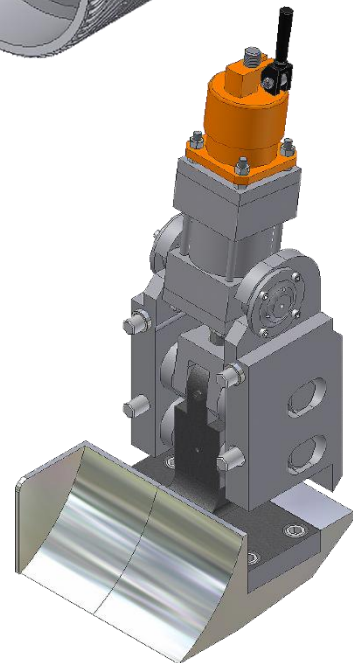
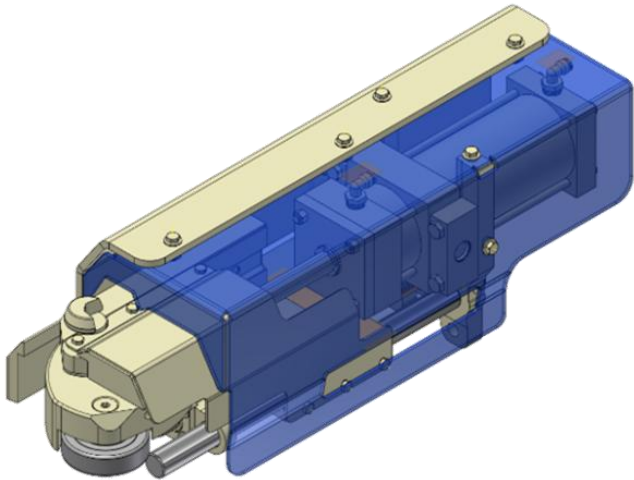
# QUICK RELEASE ON AIRBAGS



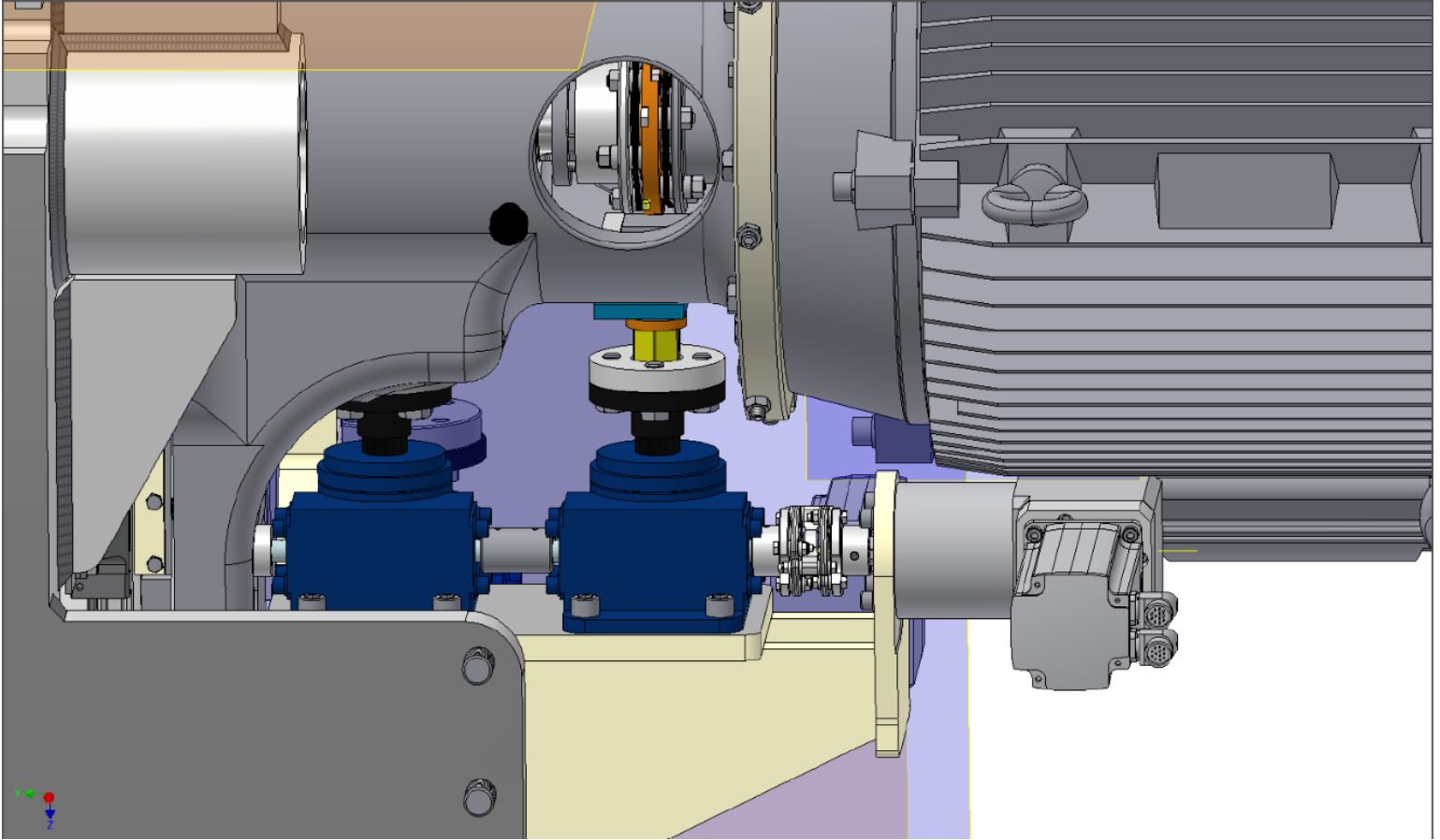
- Improves feed roll control on boards;
- The quick exhaust valve allows to have a constant pressure on the boards without exceeding the value requested by the air regulator;
- Improves efficiency and speed.

# HEAVY-DUTY UPGRADES

- Double Jack For Bottom Heads **(P. 24)**
- Improved Chip Breakers **(P. 25)**
- Wear Parts **(P. 26)**
- Heavy Duty Quick-Open Side Press Roll **(P. 27)**
- Hold Down Shoes Between Side Heads **(P. 28)**
- Cooling System **(P. 29)**
- Top Roll Assembly Collar **(P. 30)**



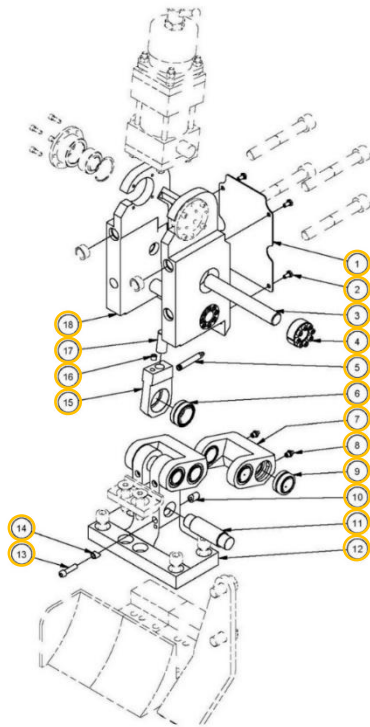
# DOUBLE JACK FOR BOTTOM HEADS



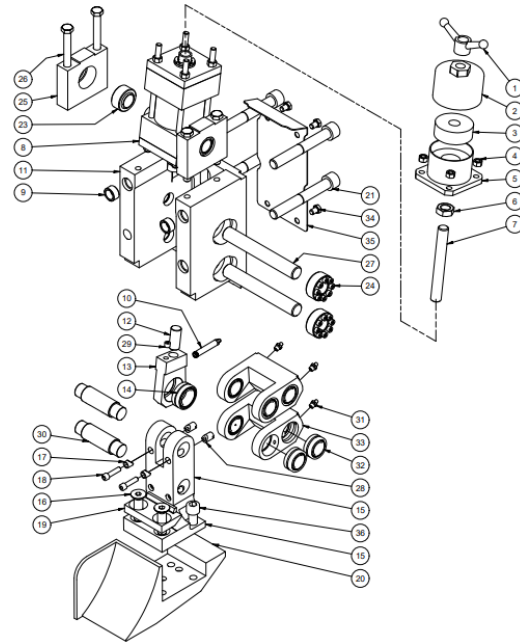
- Install a second jack on bottom head for increased support.
- Helps with 12" wide cutterheads



# IMPROVED CHIP BREAKERS WITH GREASABLE BEARINGS



**REPAIR KIT**



**NEW CHIP BREAKER**

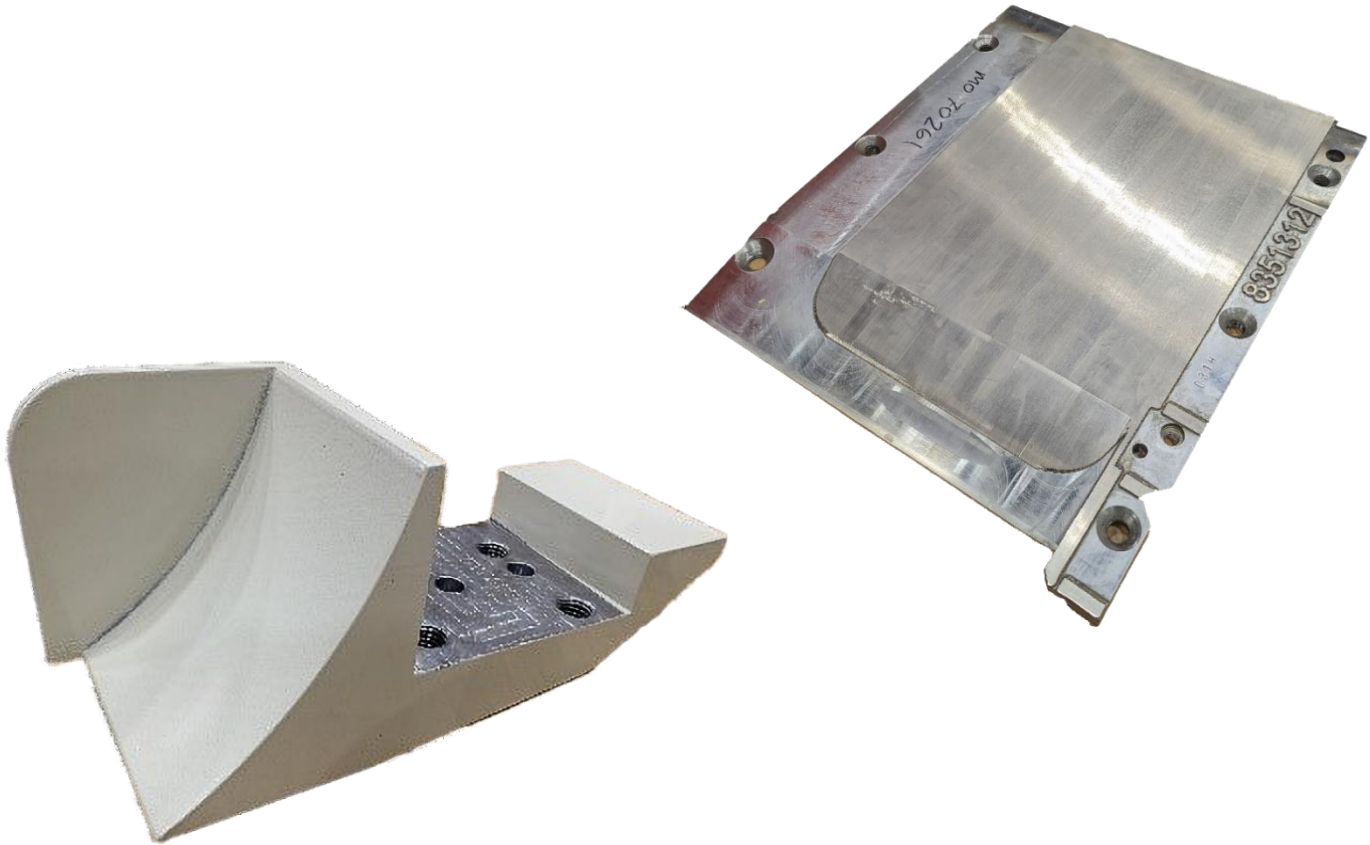
## Option #1: Needle Bearing Repair Kit

- Stronger roller bearings;
- Re-greaseable;
- Stronger and longer lasting frame and built;
- Highlighted in yellow are the new parts of the repair kit.

## Option #2: New Chip Breaker

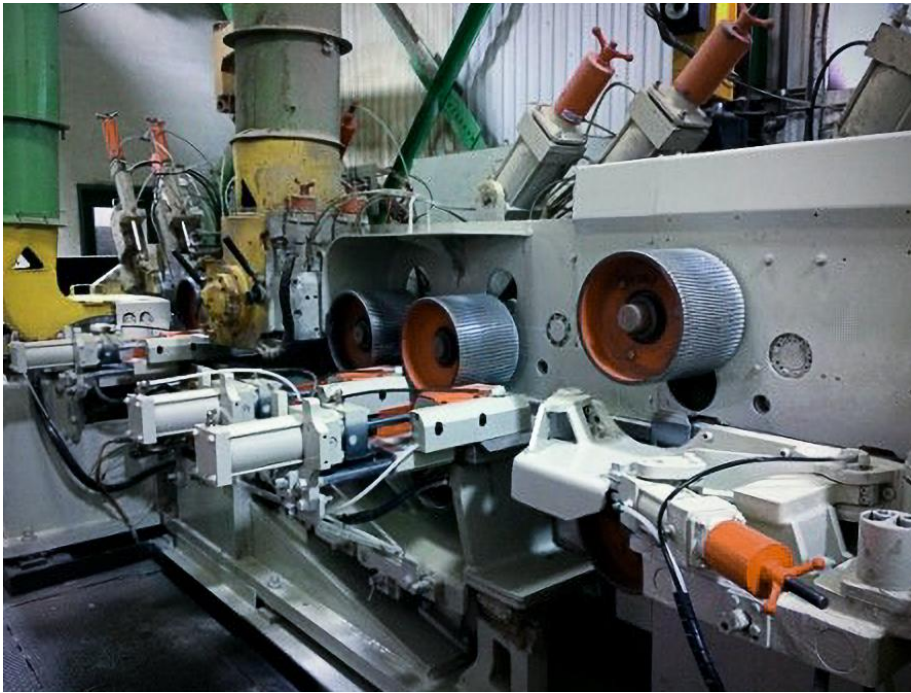
- Built with the Heavy-Duty needle greaseable bearings;
- Much longer lifetime of complete chip breaker;
- New Gilbert tungsten coating.

# ENHANCED WEAR PARTS



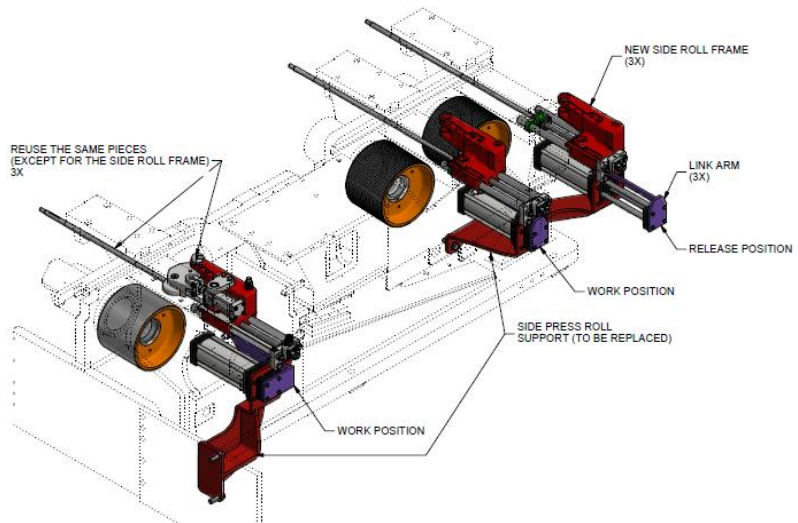
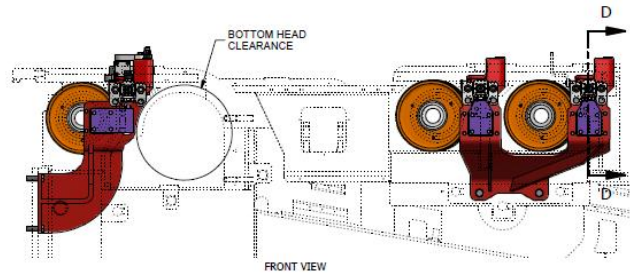
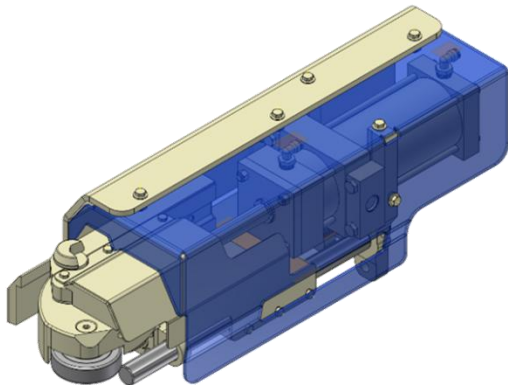
- Special tungsten cladding for bed plates, guides chip breakers & more;
- New coating lasting 3 to 4 times longer than original chrome;
- Contact us to get NEW part numbers;
- Extra tough;
- Fast delivery.

# HEAVY DUTY QUICK OPEN SIDE PRESS ROLL



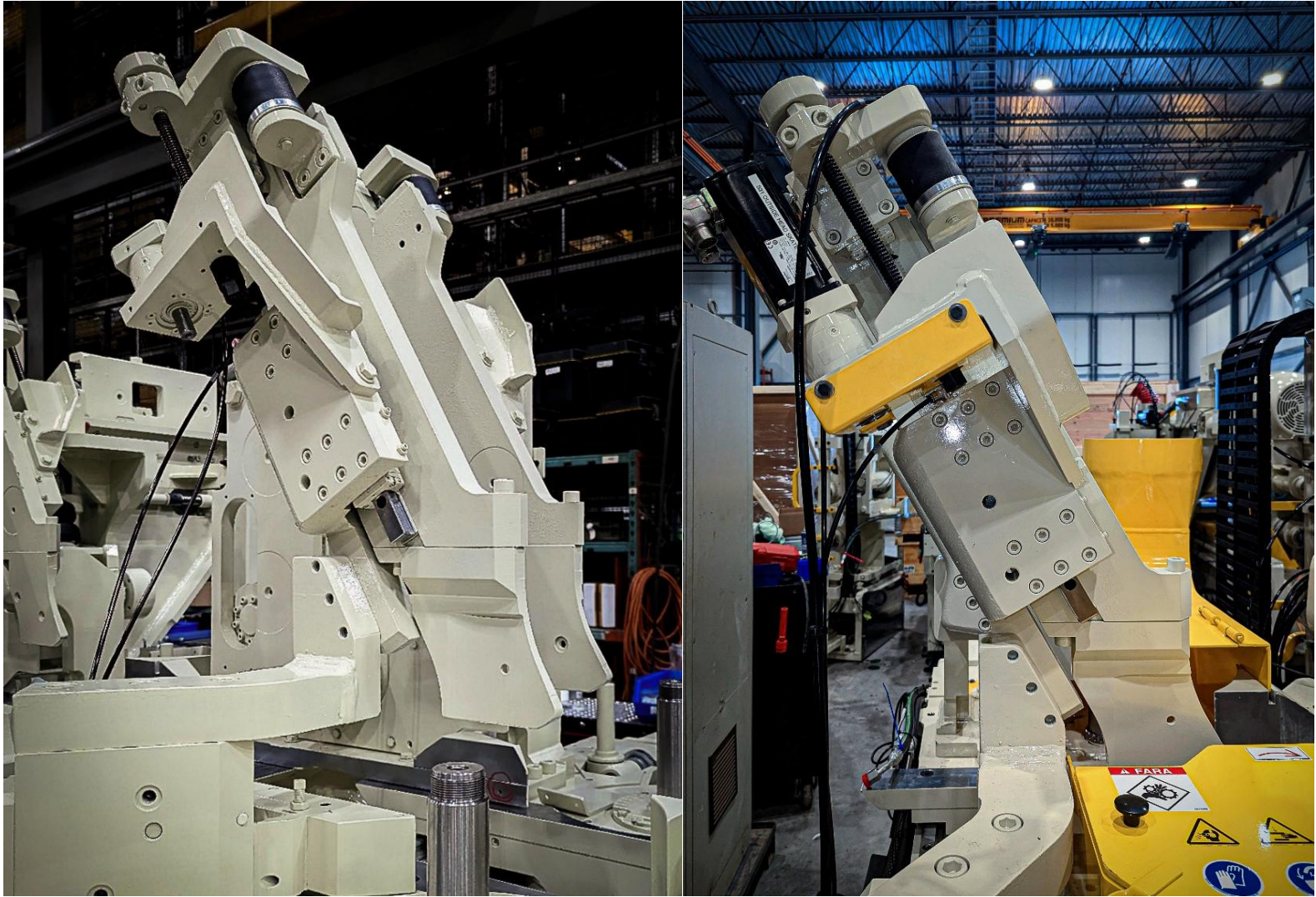
- Easy opening of press rolls activated by air cylinder;
- Stronger design;
- Easy to open after a wood jamming;
- This update will replace the existing holdover roll.

## Extra Support





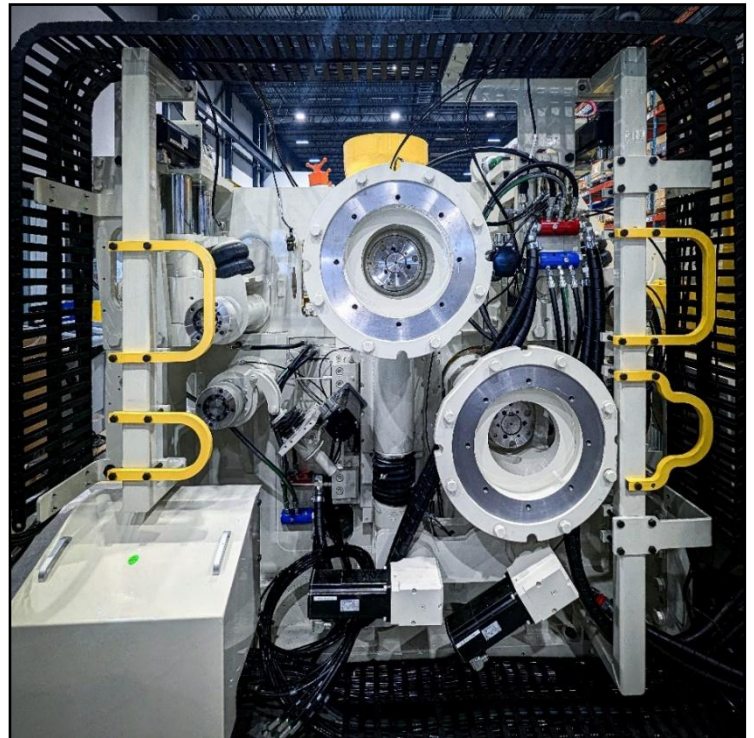
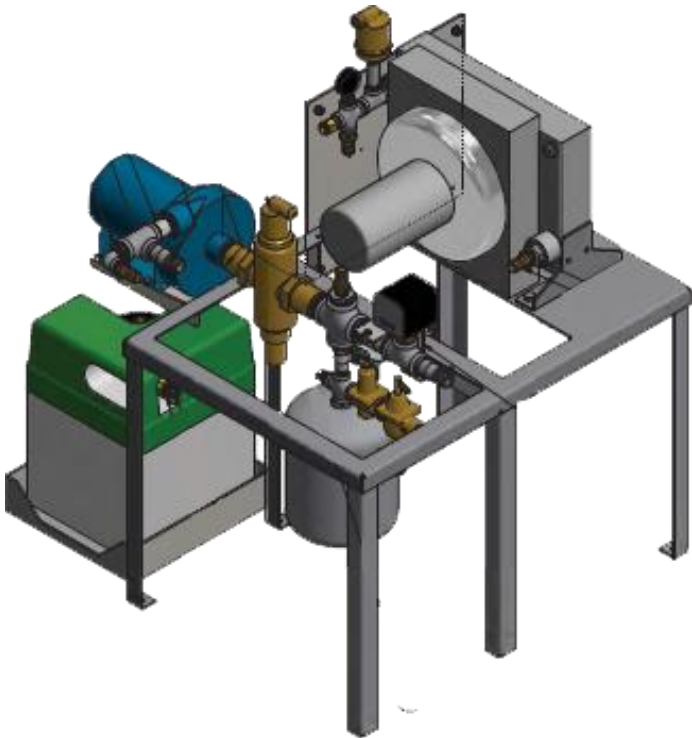
# HOLDDOWN SHOES BETWEEN SIDE HEADS



- Good pressure against wood thus obtaining accurately edges, eliminating skips on the end and avoiding the downgrading of the wood;
- Installed on linear bearings instead of dovetails;
- Easy to adjust as it has a pneumatic cylinder with proper pressure adjustment;
- More robust;
- Cooling plate using the existing cooling system;
- Possibility to add remote height adjustment.

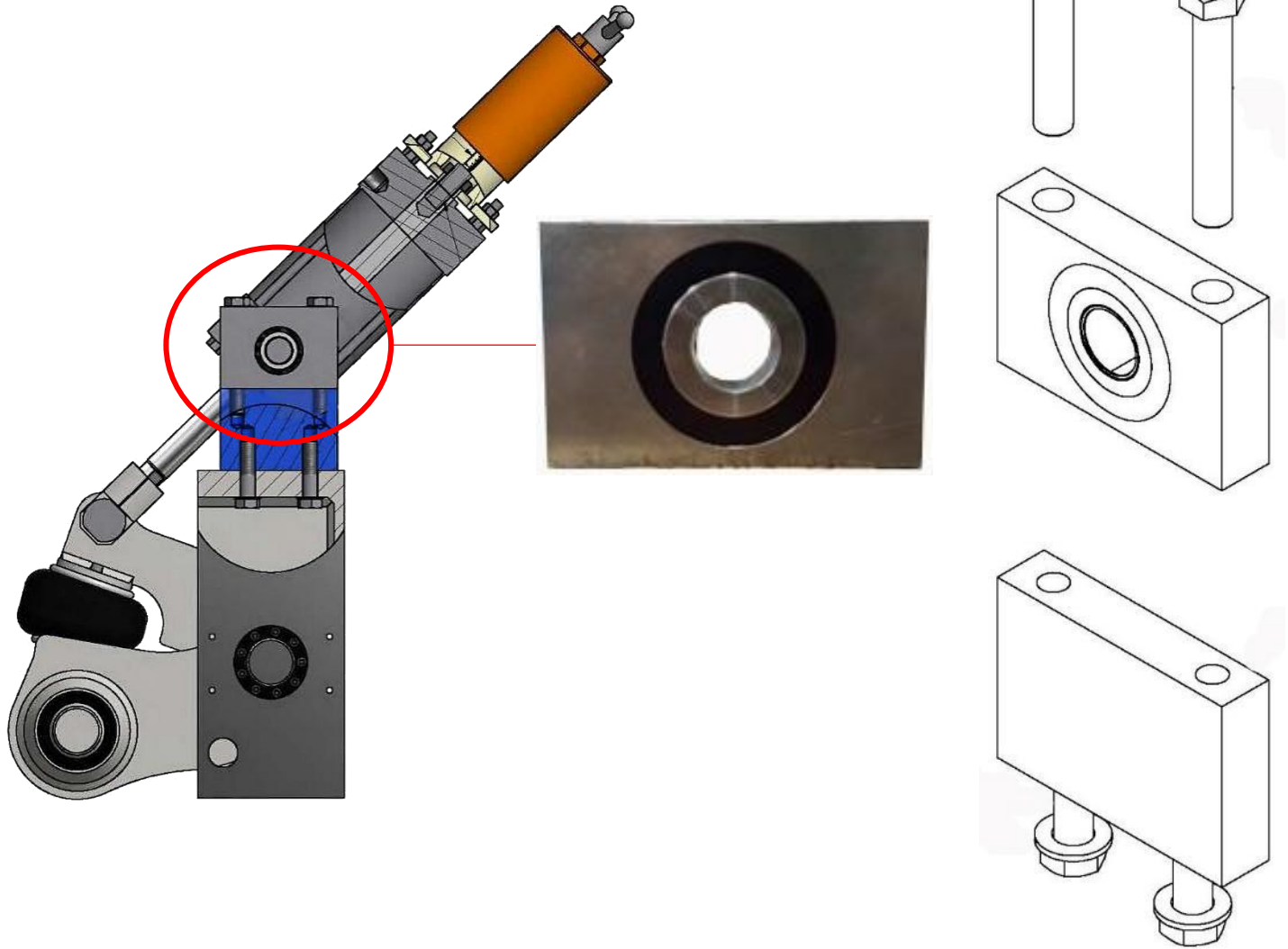
# COOLING SYSTEM

- Gilbert has developed a new cooling system that will work very well with any product (even with only water);
- It delivers 20 gallons/min instead of 4 gallons/min;
- Gilbert now installs hydraulic hoses instead of plastic hoses for the cooling system;
- Small tank with a low-level alarm;
- With this solution there should be no premature wear on any of the planer parts;
- Upgrade of existing cooling system also available.





# TOP ROLL ASSEMBLY COLLAR

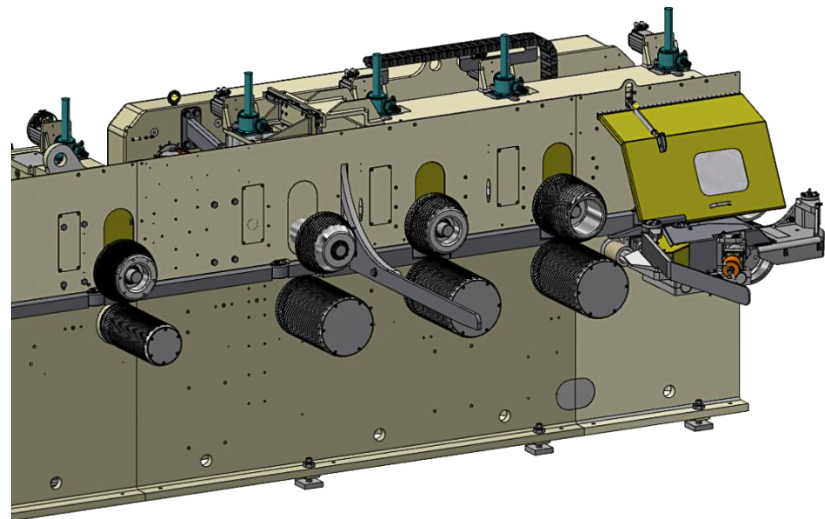
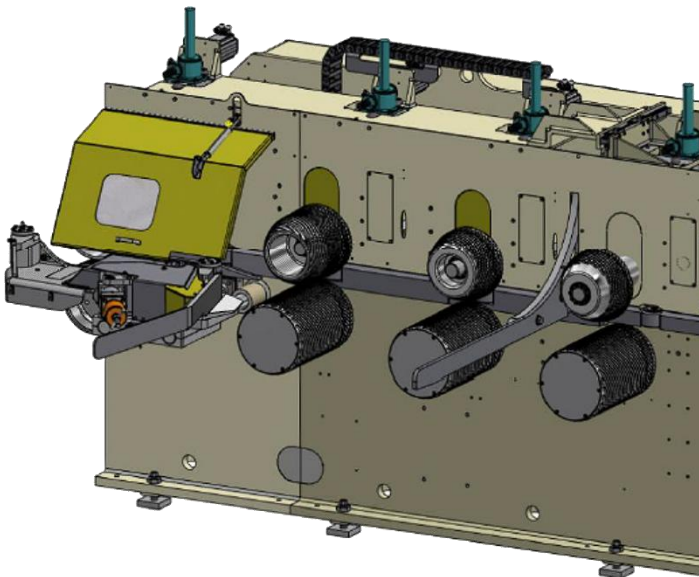
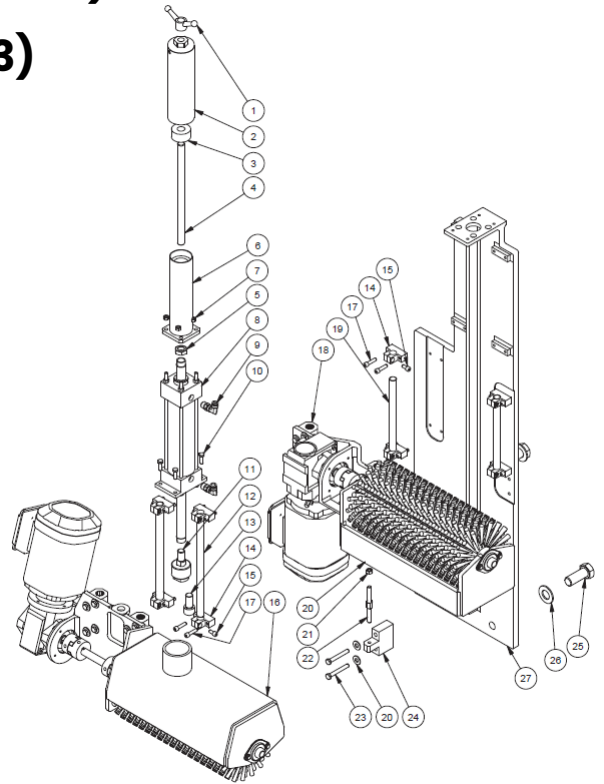


- Upgrade for air cylinder.
- Polyurethane bushing;
- For all top roll modules;
- One set of two per top roll;
- Installed on both sides of cylinder;

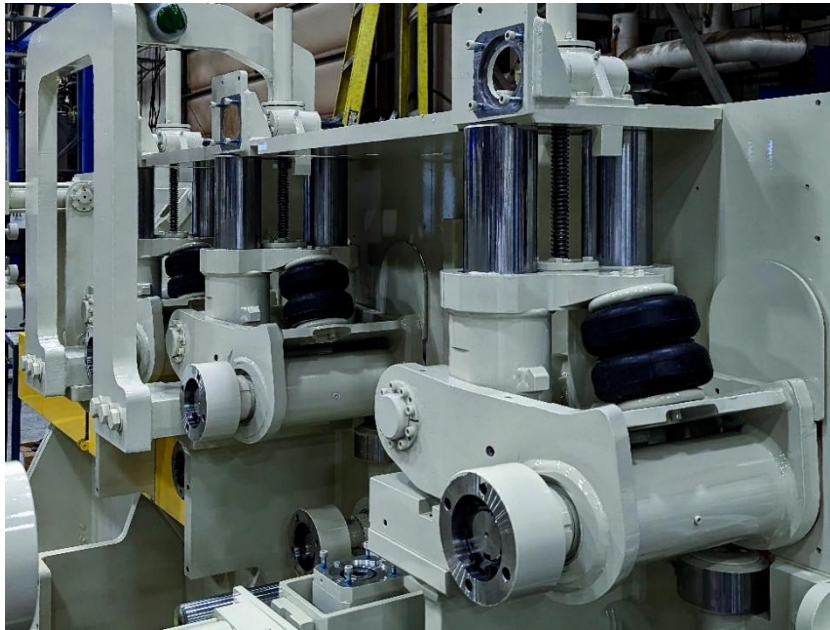
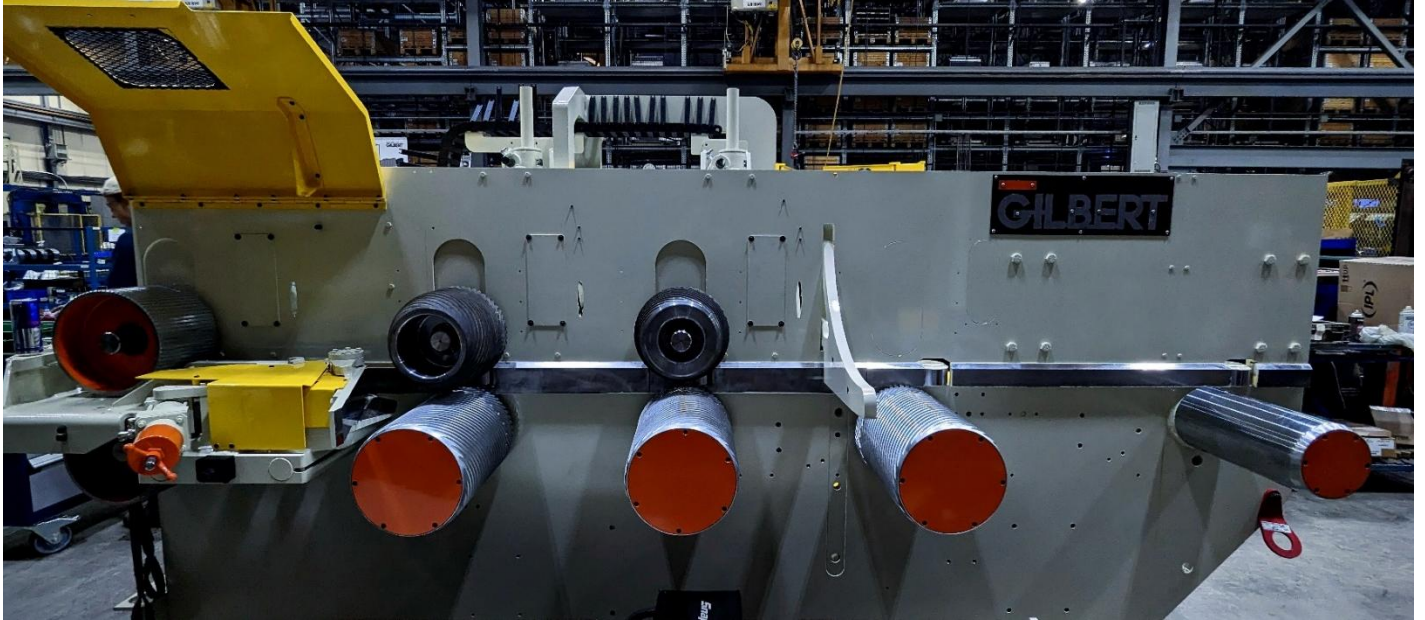


# FEED TABLE UPGRADES

- Heavy-Duty Feed Table and Bridge (P.32)
- Entry Power Bridge Modification (P.33)
- Third Pineapple (P. 34)
- Fourth Pineapple (P. 35)
- Retractable Arm for Bridge (P. 36)
- Clean-Up Brush (P. 37)
- Pineapples (P. 38)
- Rolls (P. 40)

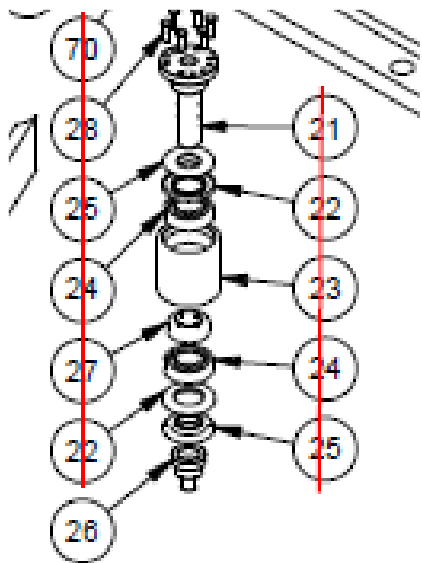


# HEAVY-DUTY FEED TABLE AND BRIDGE

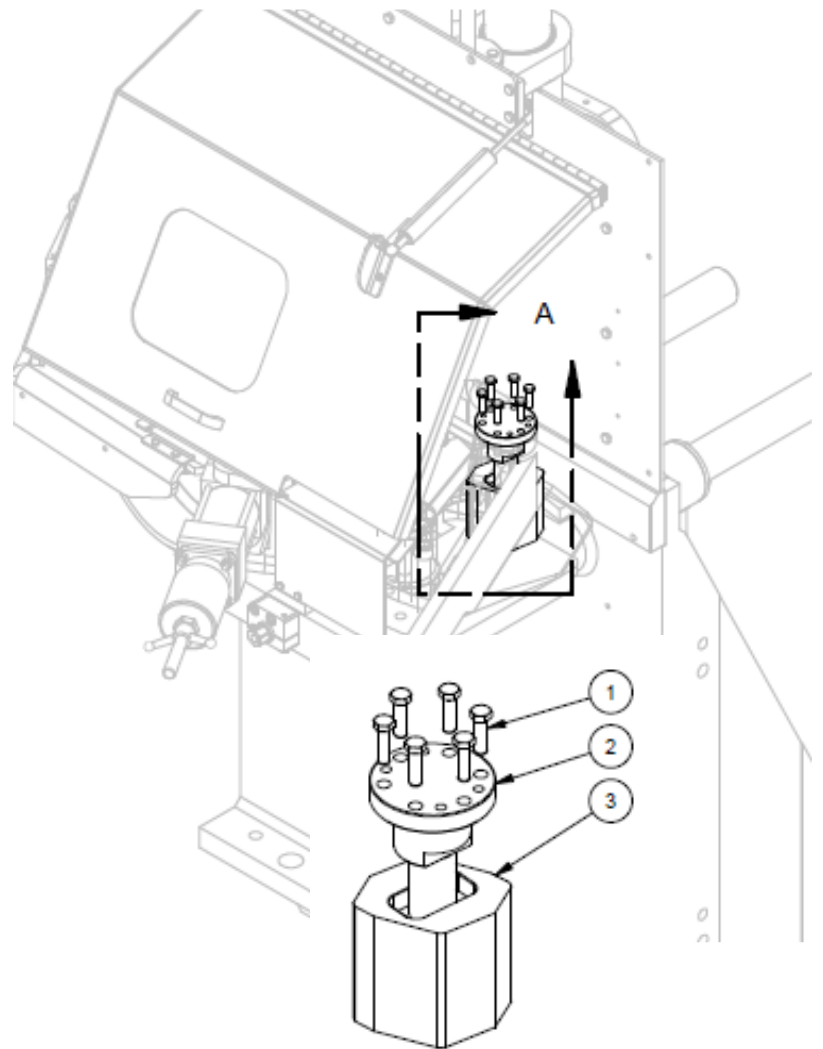


- Heavy-Duty feed table for high efficiency feeding;
- Three-foot bridge motorized with the planer;
- Bring planer 3 ft. to lumber line;
- Compact layout requires less space;
- It ensures a constant feed to the planer;
- It maintains the boards firmly against the guide bar.

# ENTRY POWER BRIDGE MODIFICATION



**OLD DESIGN**



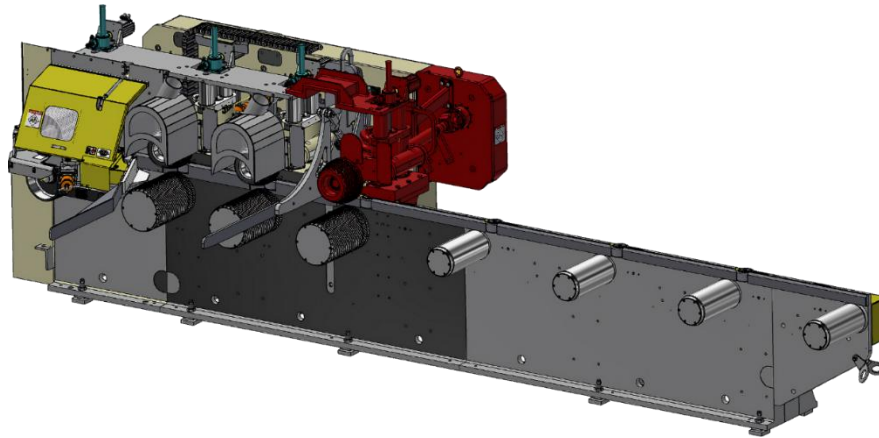
**DETAIL A**

**NEW DESIGN**

- New Corner Guide design;
- Helps feed narrow wood;
- Less mechanical parts;
- Increase productivity;

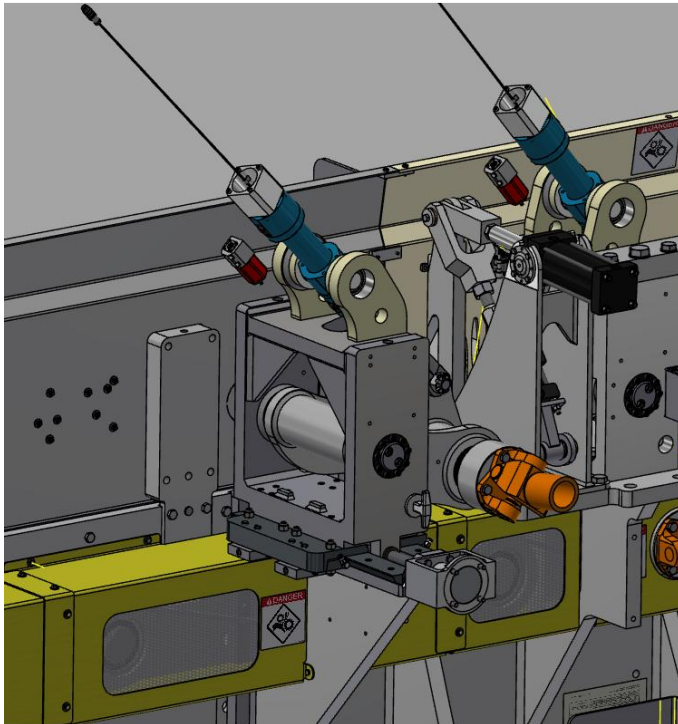


# THIRD PINEAPPLE

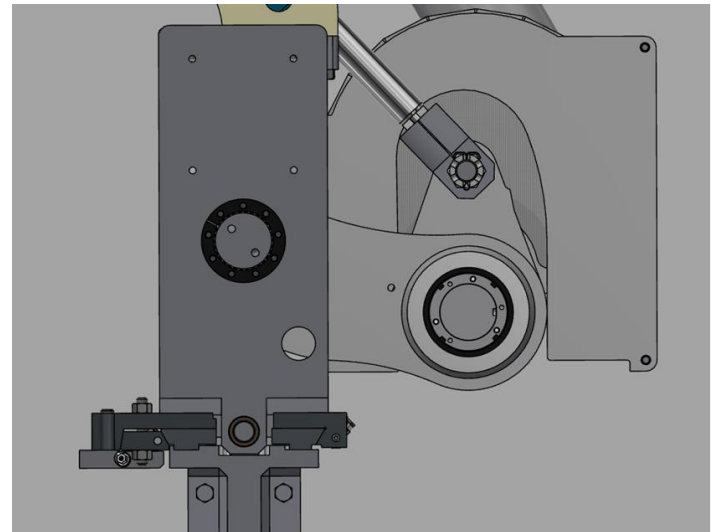


- Third pineapple installed on feed table to improve feeding wider wood and faster piece count and reduce gap;
- This system is adjustable depending on the length and width and provides piece count improvement.

# NEW SIDE TRAVEL ON DOVETAIL RATHER THAN LINEAR BEARING

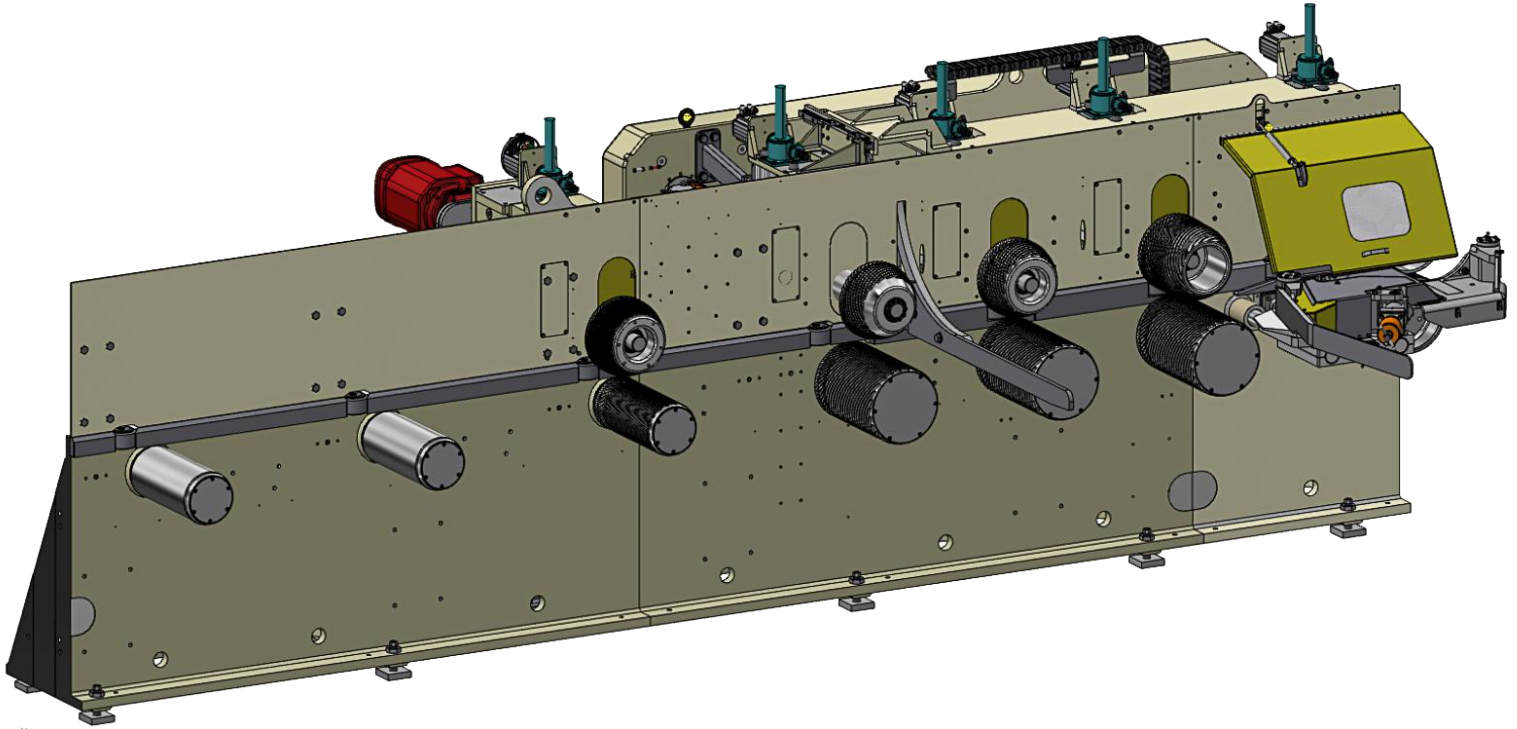


- More rigid
- Less maintenance
- Better traction



# FOURTH PINEAPPLE

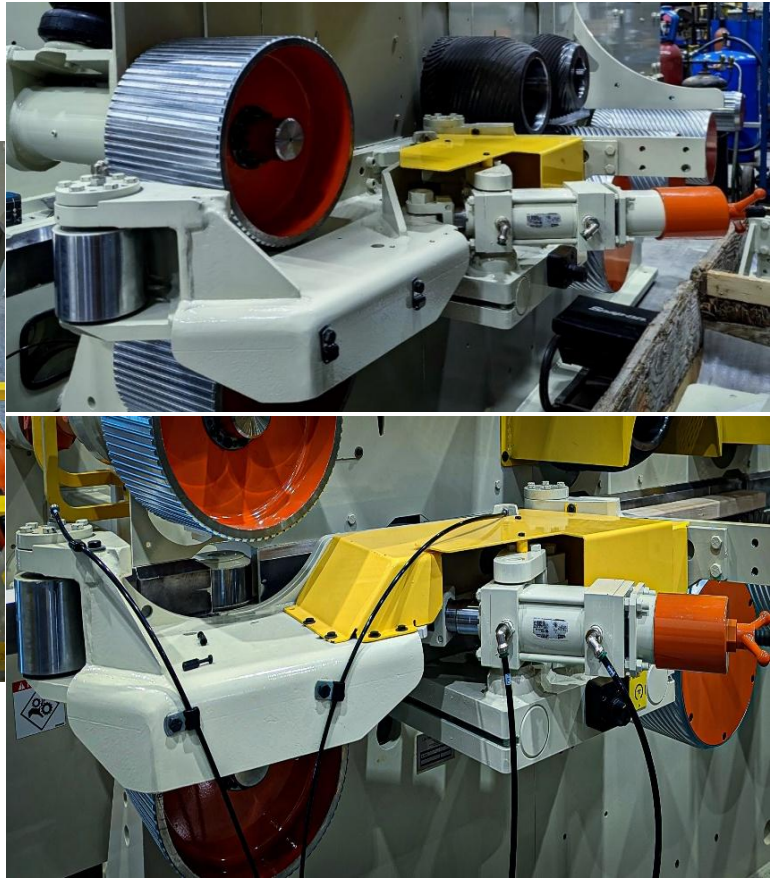
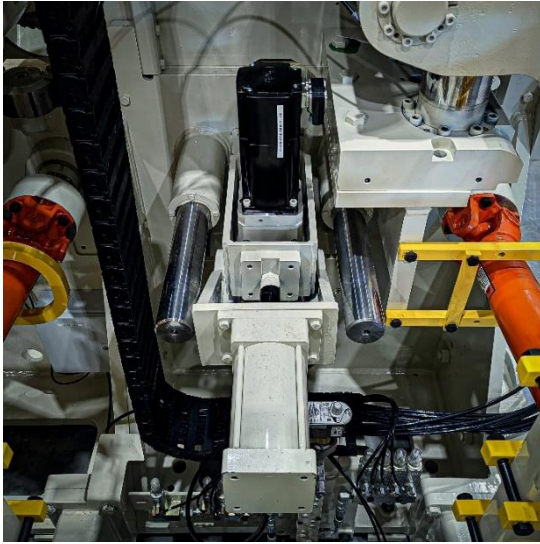
---



- Driven by a separate motor than the third pineapple;
- Conceived to hit worldwide feeding records; 230 lugs per minute on 2x4, 16
- Allows a faster infeed;
- Reduced gap.



# RETRACTABLE ARM FOR BRIDGE

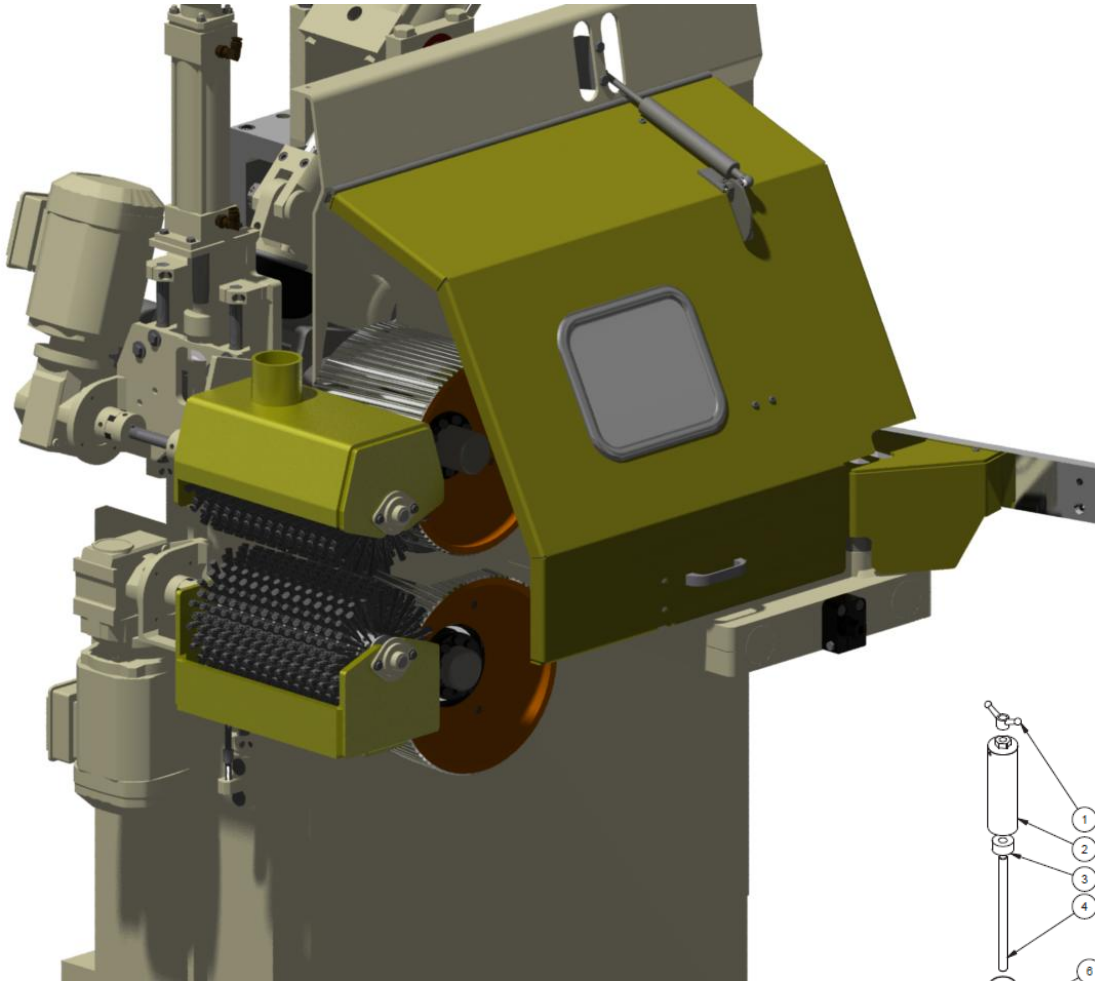


- Helps feed crooked and bowed lumber
- Less jams in the planer;
- Will open up for different widths;
- Can be used on bridge to keep boards against the guide bar;
- Can open up when boards are wider than the required product (ex: 2x12, 12.25 product coming);
- Can be installed with servo for auto width adjustment;



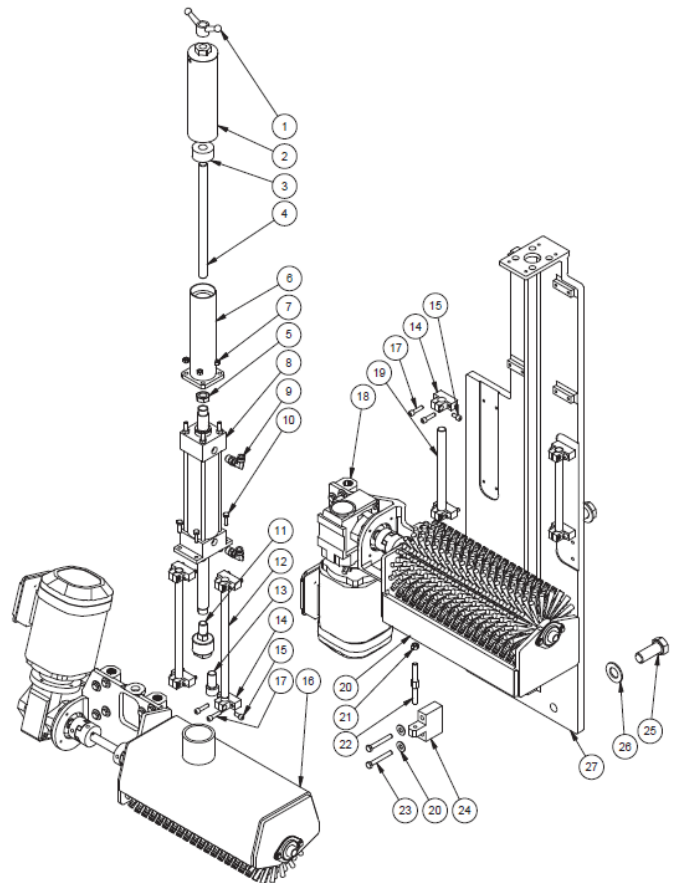


# CLEAN-UP BRUSH



The clean-up brushes can be installed:

- On the bridge to clean sand off wood before it enters the planer;
- Before the optimizer to ensure the cleanliness of the wood.



# PINEAPPLES



Chrome Finish



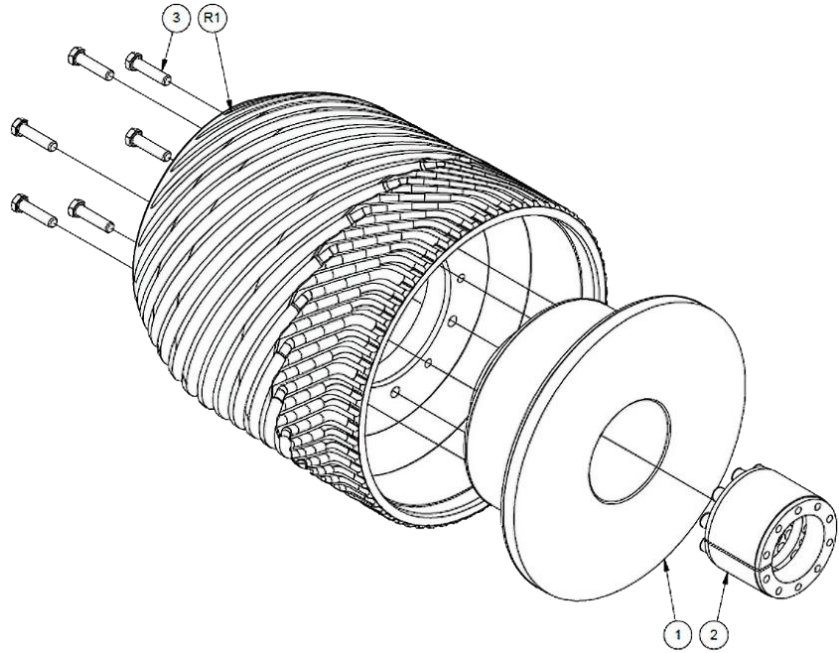
Tungsten Finish

- Many different designs for different products;
- Chrome and tungsten coating available.

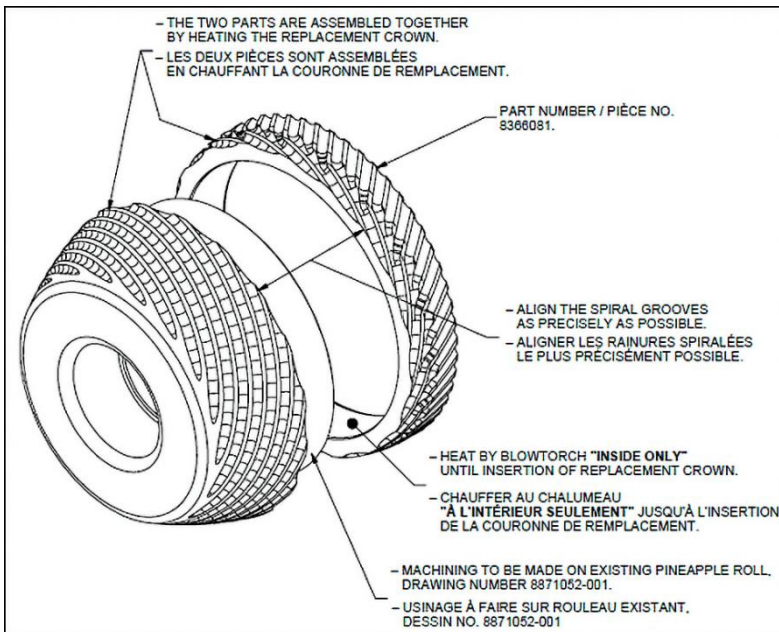


# PINEAPPLES

## Boltable (Quick change) Pineapple



## Replacable crown



- Leave hub on table, change from 4" to a 6" in about 10 minutes
- Increases the up time and production;
- Not as heavy as regular model

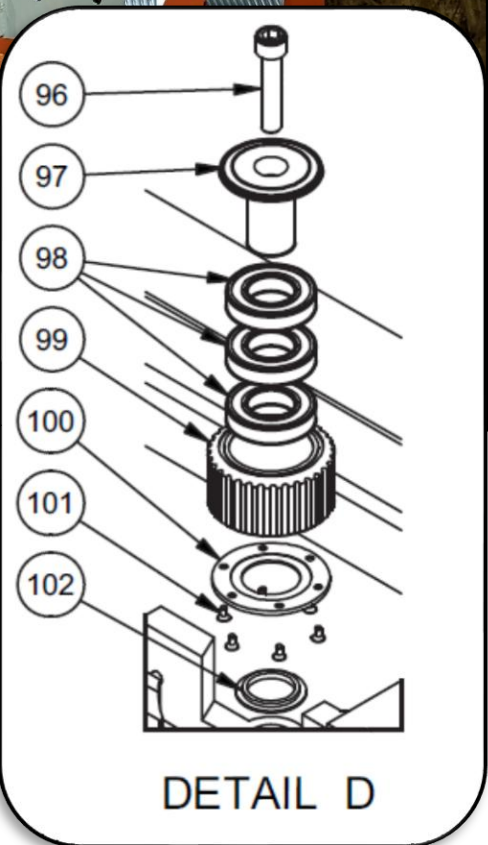
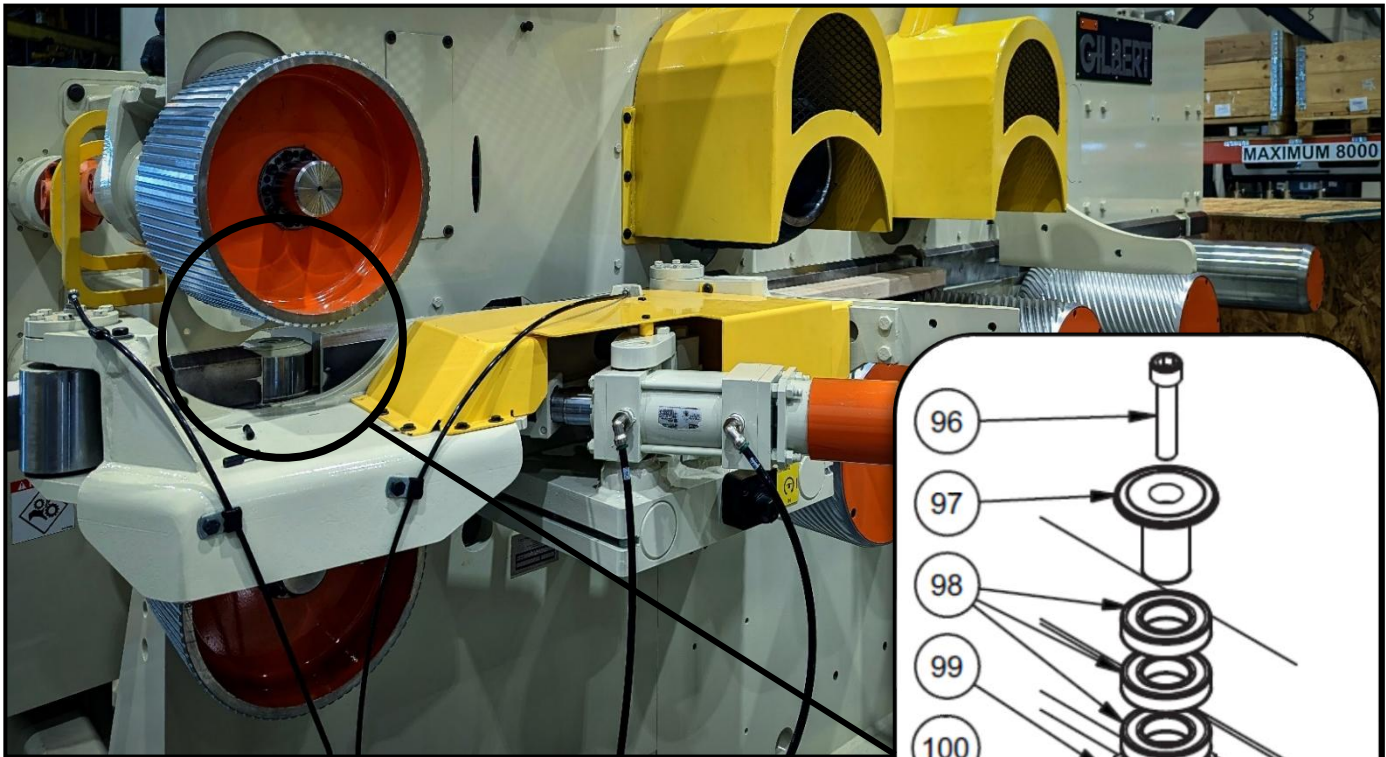


# ROLLS

## Aggressive Bed Rolls Below Pineapple Rolls



- Replaceable crowns available, same as Pineapples;

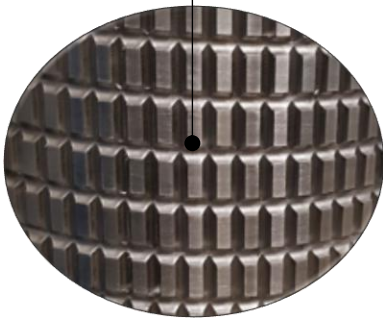


- New grooved rollers on Feed Table
- Helps boards to stay against the guide bar

# GILBERT PLANER INFEED ROLLS

## Aggressive Infeed Rolls

### Knurled Finish



### Grooved Finish



- Works well on wood with ice;
- Better traction on infeed;
- Increased uptime & productivity;
- Easy change at little cost to help improve feeding

# GILBERT PLANER CENTER AND OUTFEED ROLLS

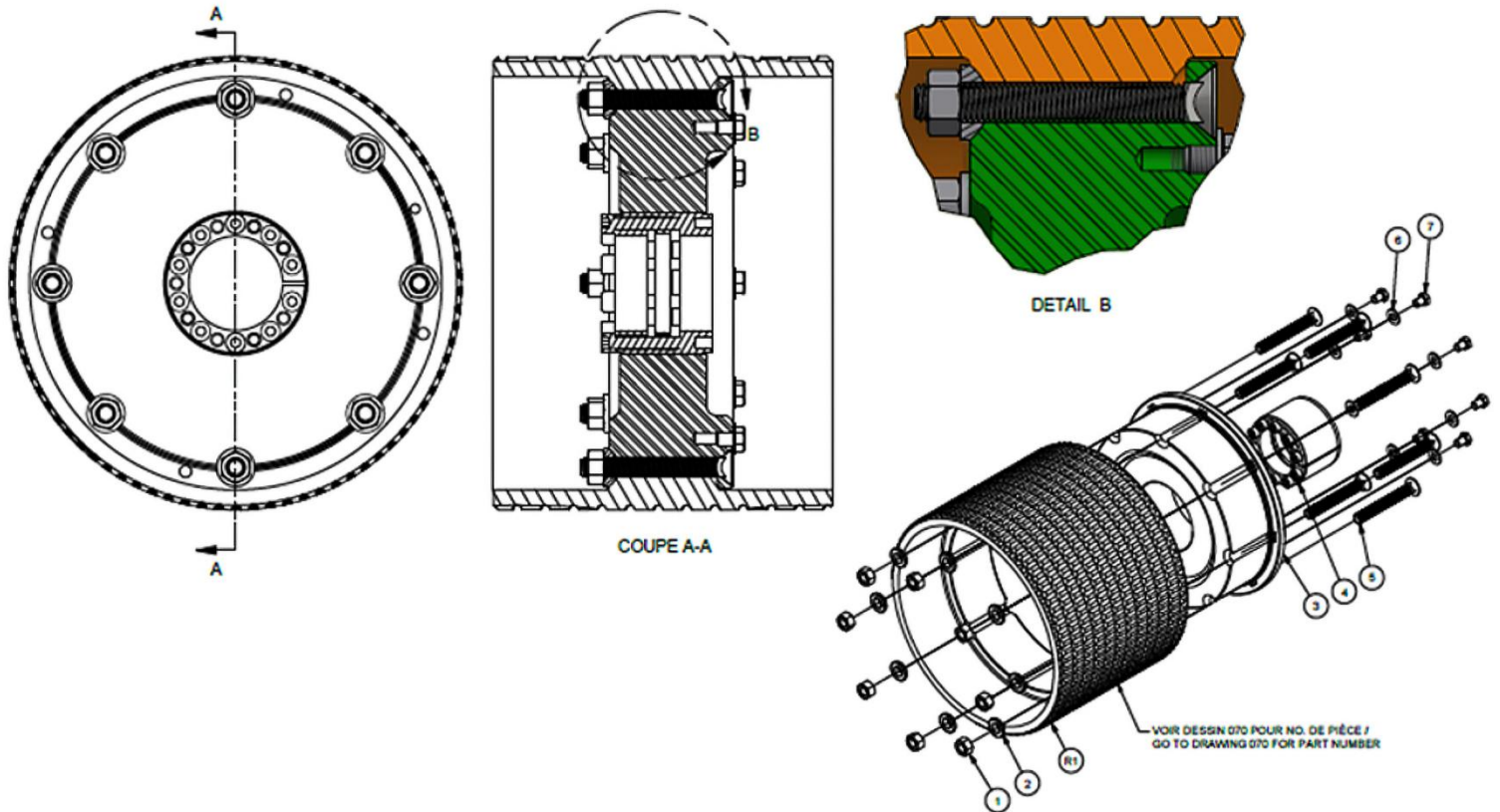
## Sand Blasted Finish



- Better traction on center and exit rolls;
- Helps pull the boards out of the planer;
- Increased uptime & productivity;
- Doesn't mark or tear the wood.



## Quick Change Feed Rolls

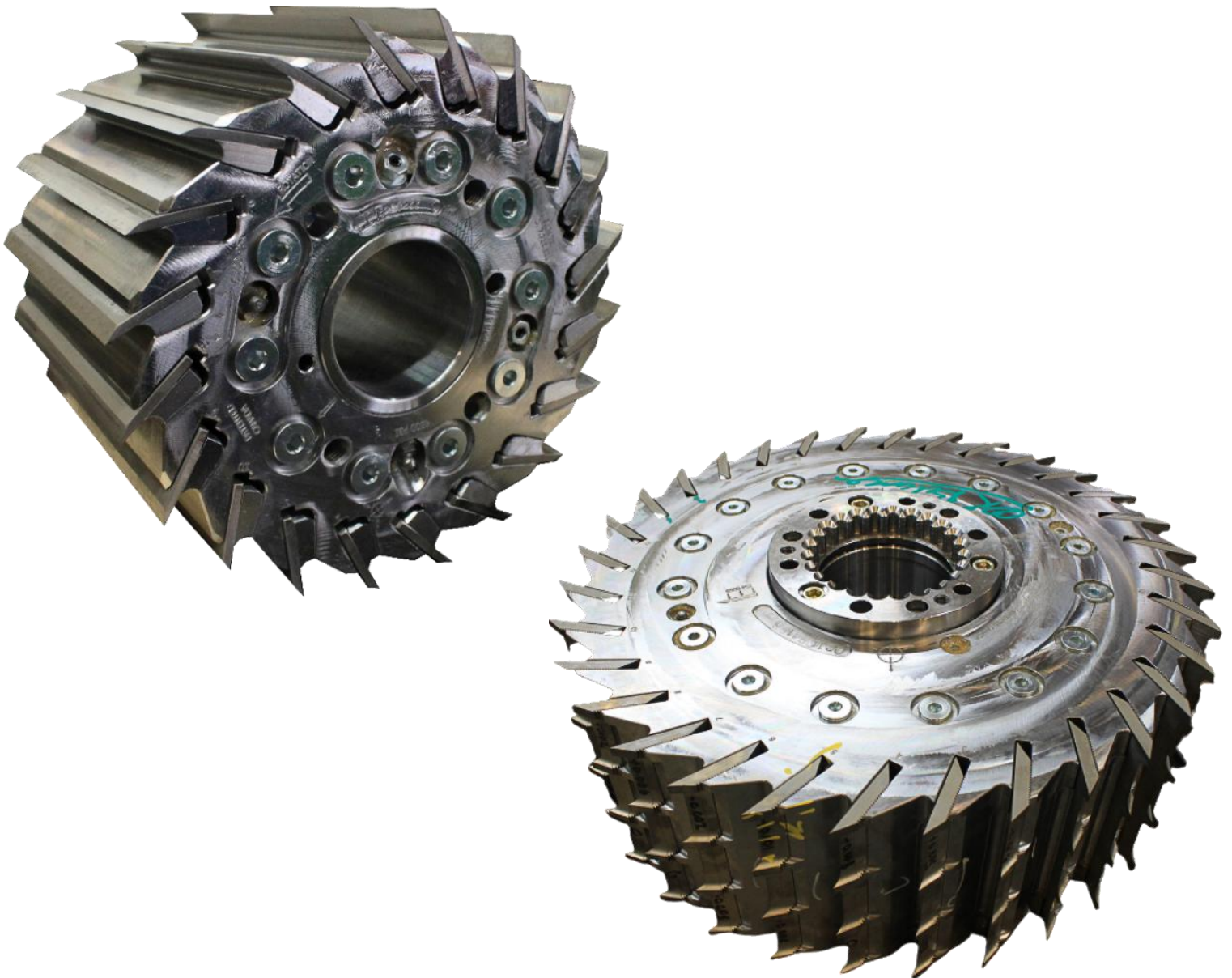


- Better traction;
- Easier and faster to change; not as heavy as regular model;
- Helps pull the boards out of the planer;
- Increased uptime & productivity;
- New roll designs can be installed.
- Leave hub in planer, just change the roll

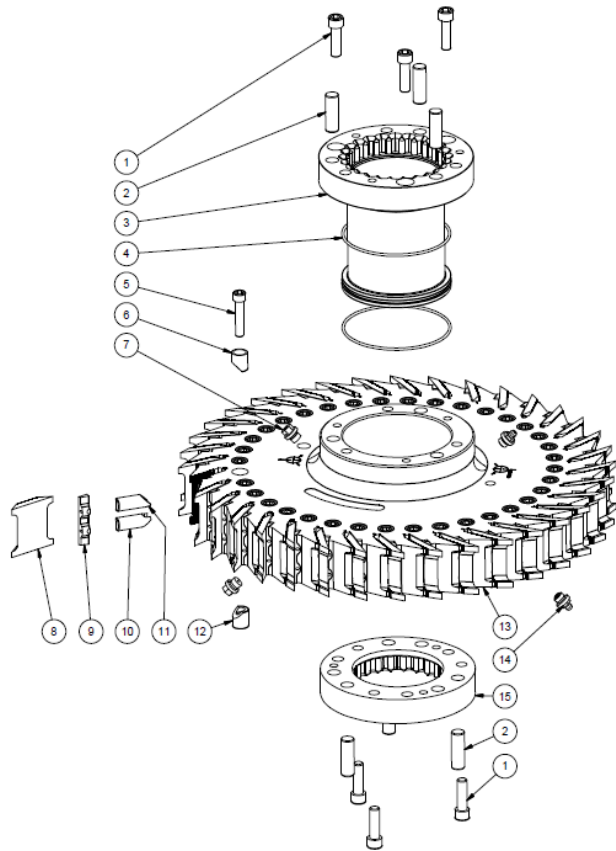
# CUTTERHEADS

---

- GILBERT Side Heads **(P. 45)**
- Hydro-Grip Triple Pattern Side Heads **(P. 46)**
- Hydro-Grip Top and Bottom Heads **(P. 47)**
- Key Knife Cutterheads **(P. 48)**
- Realignment Jig for Top and Bottom Heads **(P. 49)**
- Top and Bottom Head Handling Tool **(P. 51)**



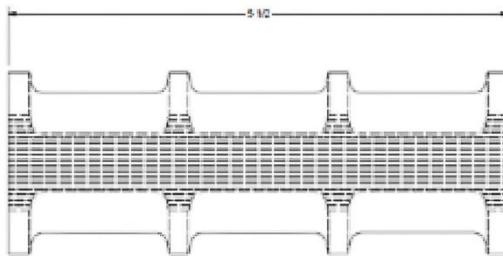
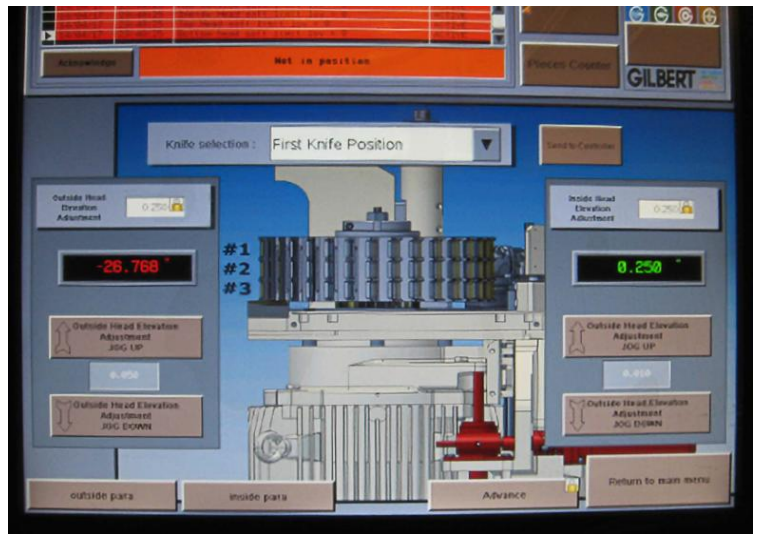
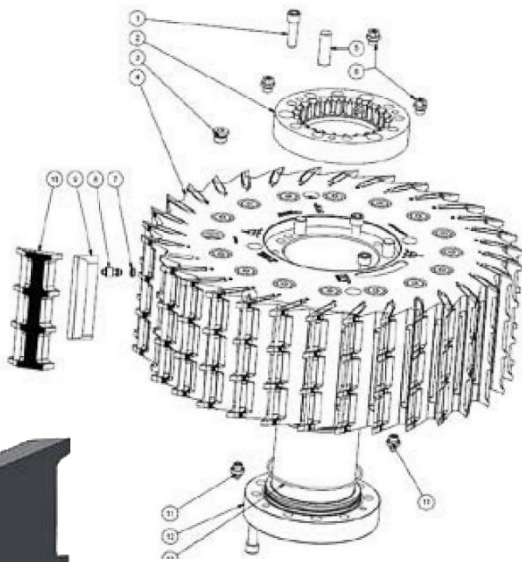
# GILBERT SIDE HEADS



- More knives in same cutting circle;
- Reduce jointing after installing the cutterhead;
- Increase the quality of the finished wood;
- Reversible knives;
- Less expensive than LV knives.

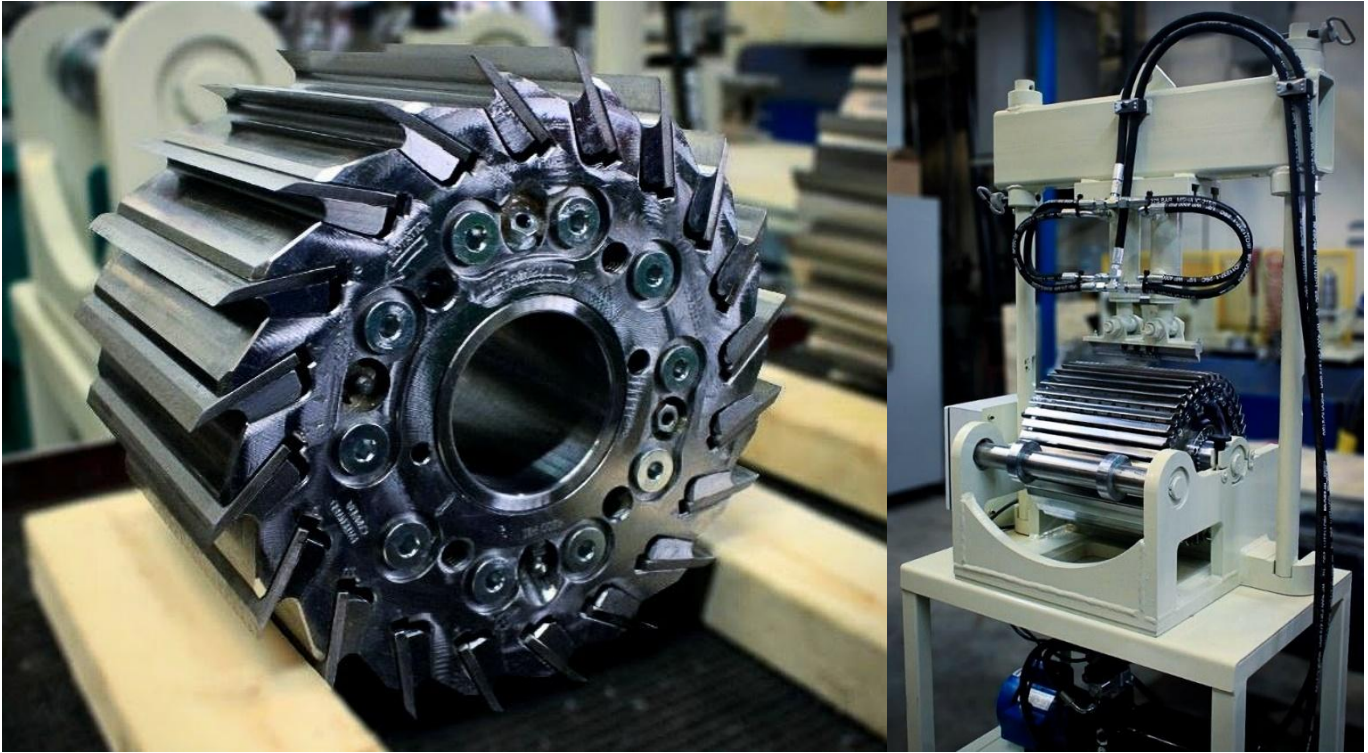


# HYDRO-GRIP TRIPLE PATTERN SIDE HEADS

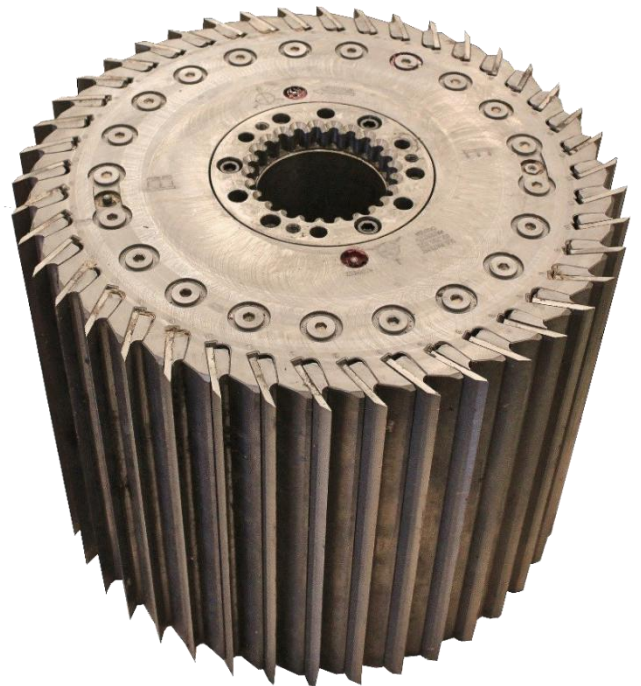


- 6 inch side head knives;
- The knife can have 3 or more patterns;
- Heads stay in the planer 3 times longer;
- Joint knives once all three patterns are worn;
- Knives are reversible & grindable.

# HYDRO-GRIP TOP AND BOTTOM HEADS



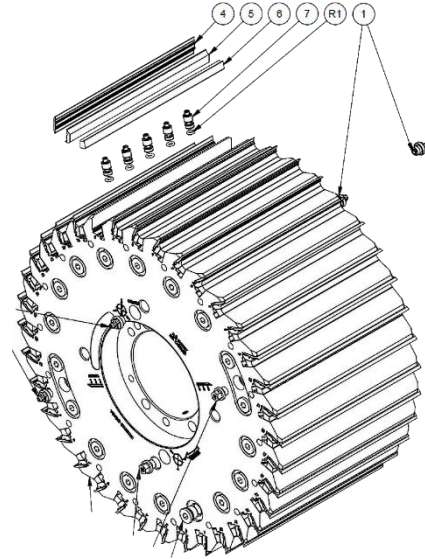
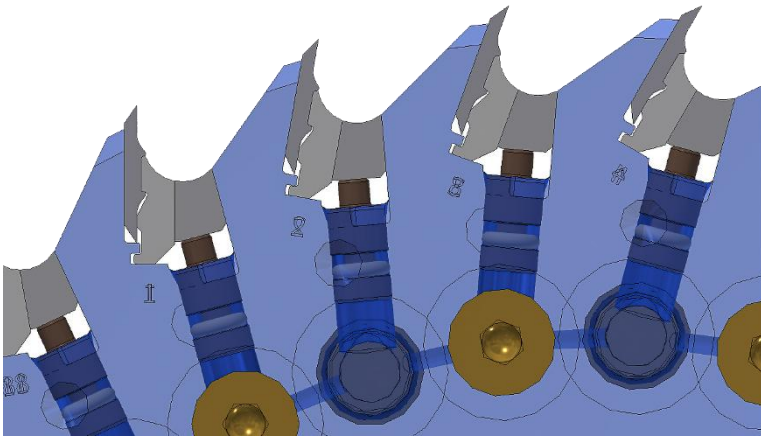
- All knives are mounted with a hydro-grip system;
- Time saved because there are no bolts to install;
- Reduce jointing after installing the cutterhead;
- Increase the quality of the finished wood;
- Flat or corrugated knives;
- More knives in same cutting circle;
- Easy to change knives.
- Different widths for different products  
; 4" , 6" , 8" , 10" , 12"



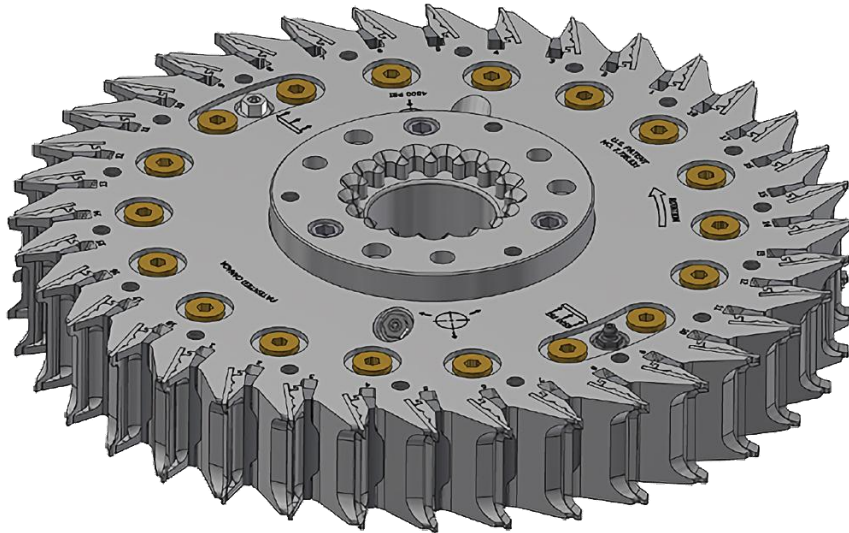


# KEY KNIFE CUTTERHEADS

## Hydro-Grip Top and Bottom Heads with Key Knives



## Hydro-Grip Side Heads with Key Knives



- Safer
- All knives are mounted with a hydro-grip system;
- Time saved because there are no bolts to install;
- Long lasting on planer without changing;
- No grinder required.



# KNIFE REALIGNMENT JIG FOR TOP & BOTTOM HEADS

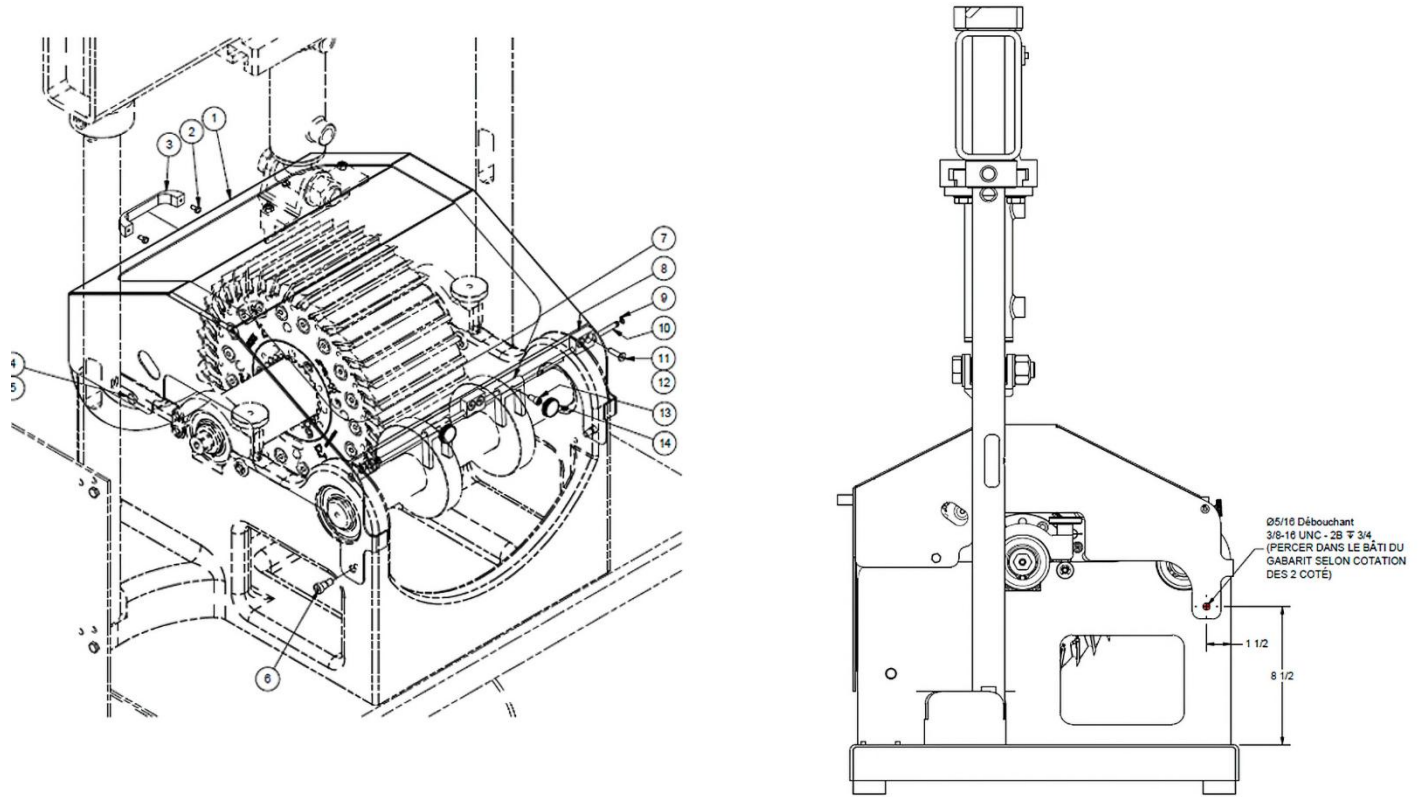


- Jig to set knives in top and bottom cutterheads;
- Better traction to insert knives;
- Better cutting circle;
- No use of the hammer, Safer;
- Faster.

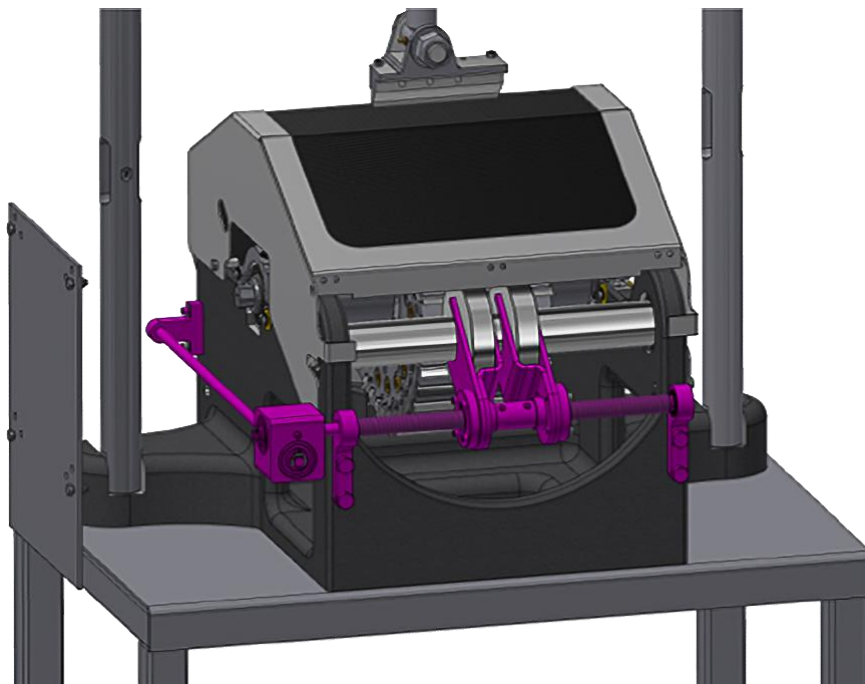


# KNIFE REALIGNMENT JIG FOR TOP & BOTTOM HEADS

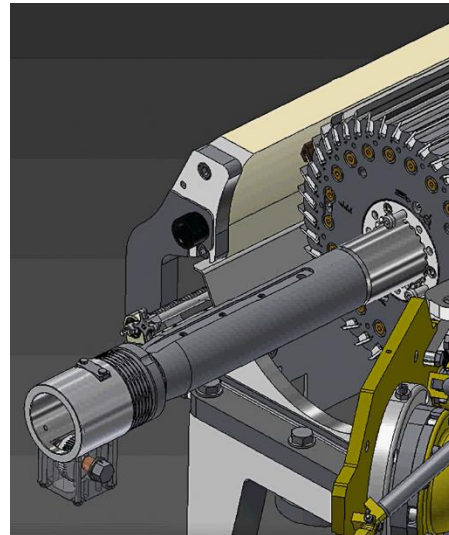
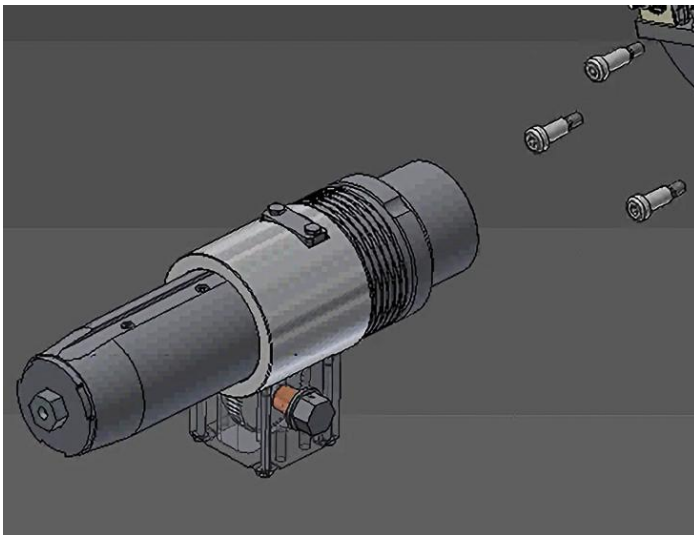
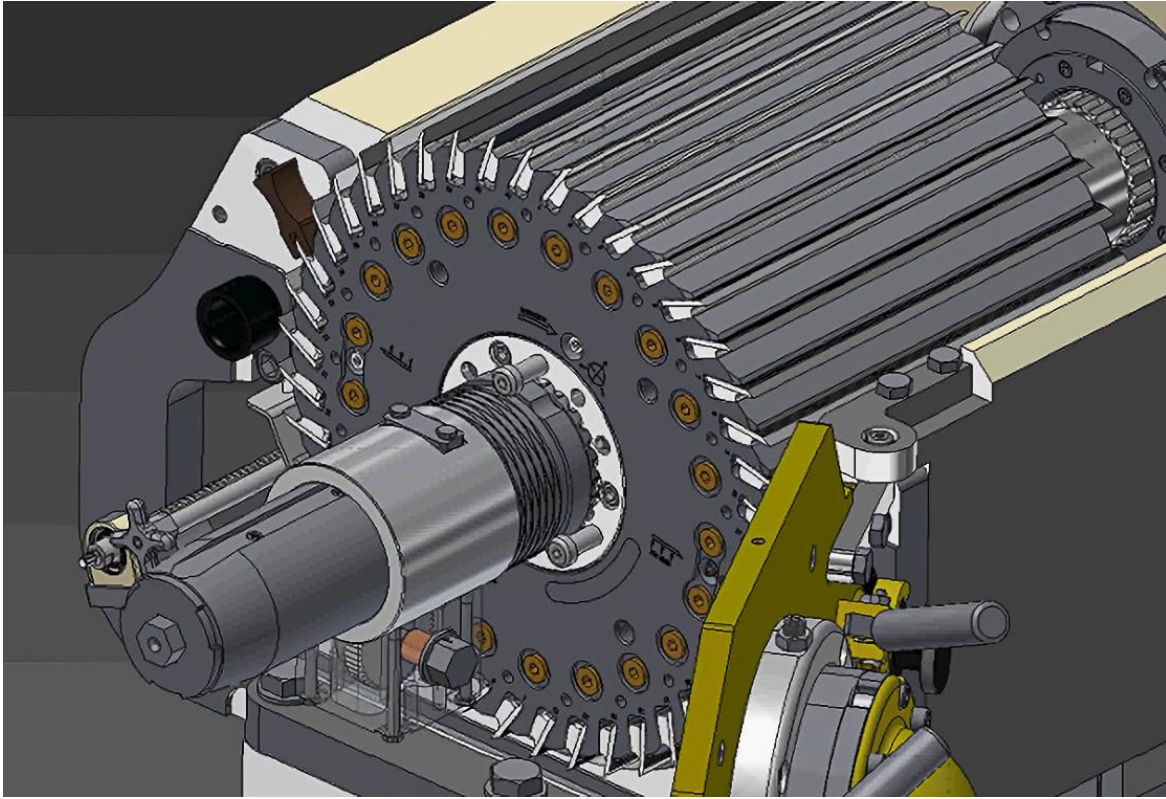
## Protective Guards



## Wheel Adjustment Kit



# TOP & BOTTOM HEAD HANDLING TOOL

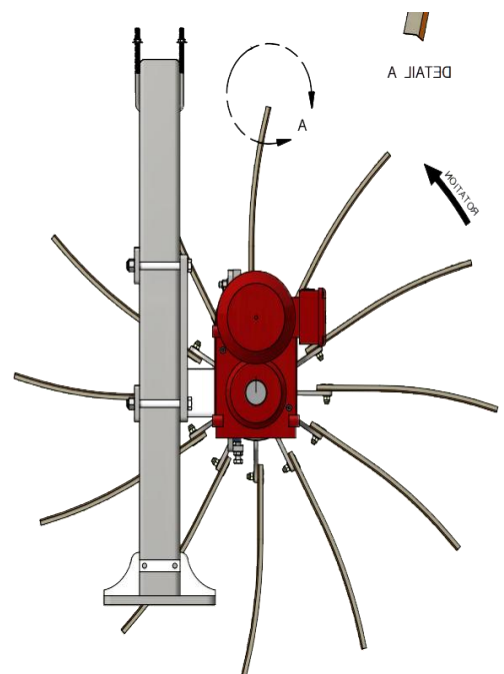
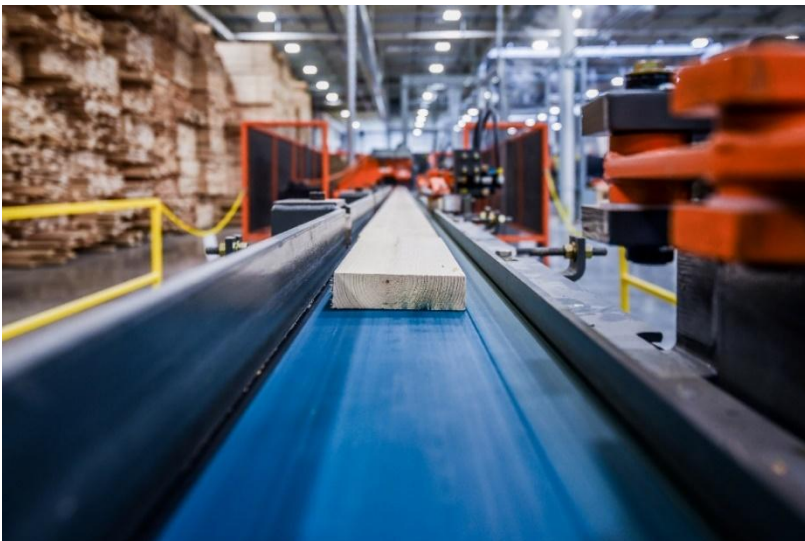


- Safer for operator;
- Improved tool to remove heavy and wide top and bottom heads from the planer;
- Easier to pull out and push back head;
- Ratchet included.

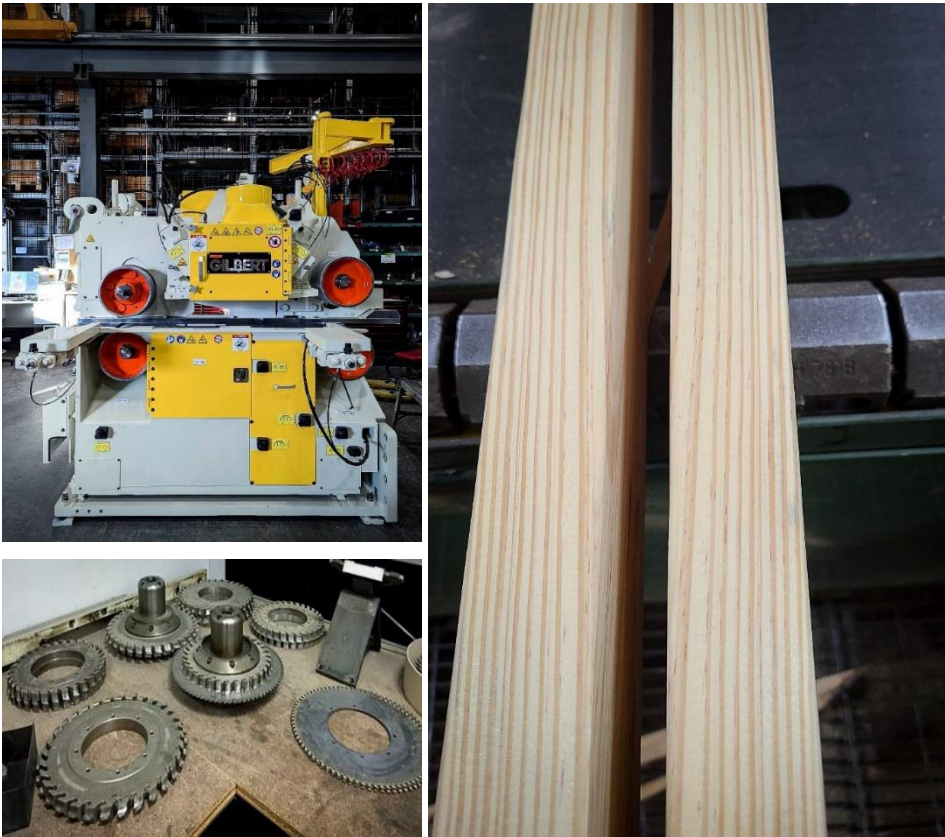


# OUTFEED LINE

- Profile / Splitting Module (P. 53)
- Slowdown Belt (P. 54)
- Slowdown Brush (P. 55)
- Outfeed Belt (P. 56)
- Outfeed Bridge (P. 57)



# PROFILE / SPLITTING MODULE CAN BE RETROFITTED TO EXISTING PLANERS



Time to split, time to profit

- The module can be attached to a planer or on an independent production line.
- Module to make special profiles or to split lumber in two or three pieces;
- Feed speeds up to 2400 ft/min (725 m/min);
- It operates with the same Hydro-Grip system as used on Gilbert planers;
- Any type of splitting or profiling tools can be installed;
- Can be retro fitted to existing planers.





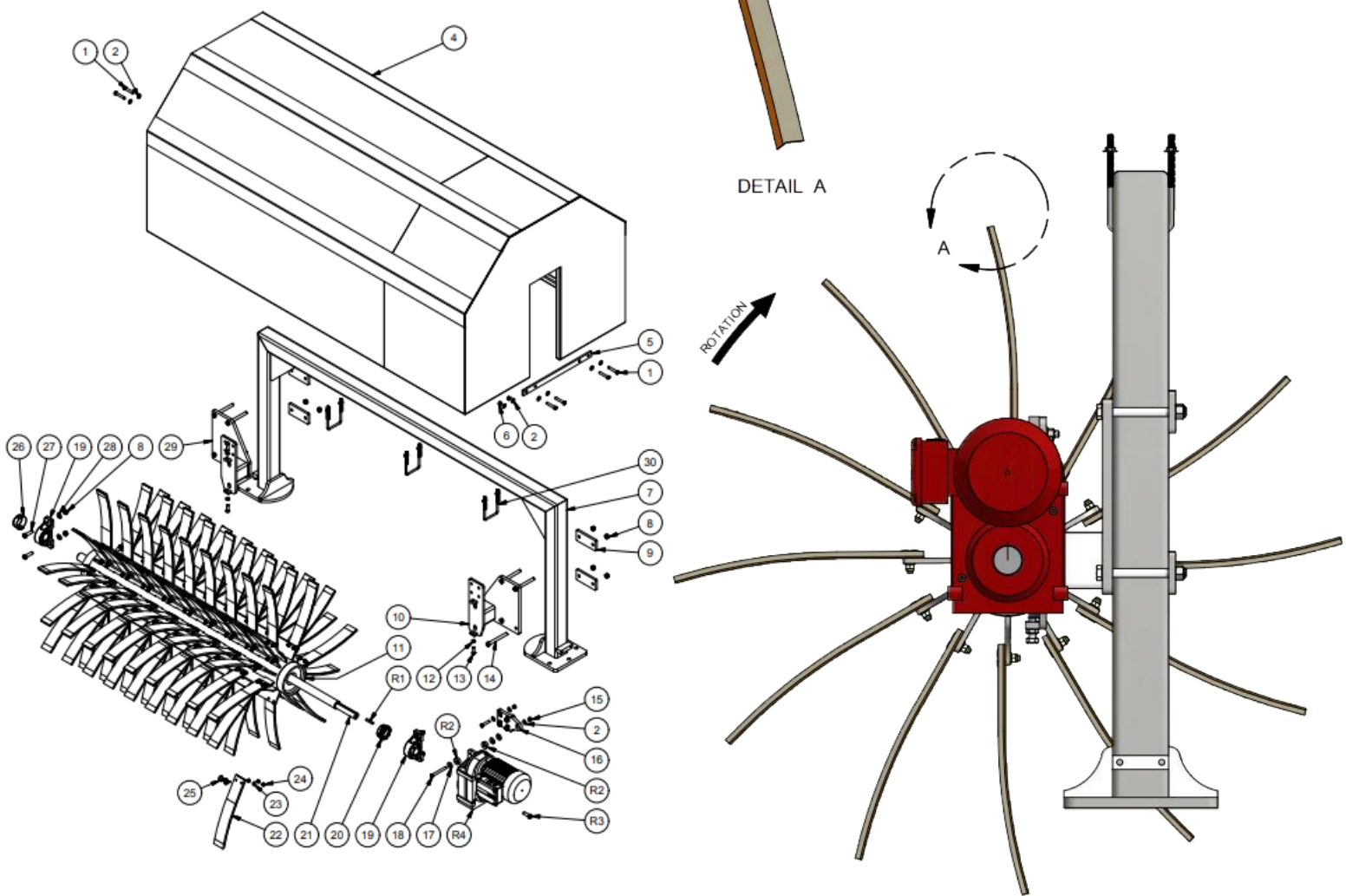
# SLOWDOWN BELT



- Designed to decelerate boards from high speed GILBERT planers;
- Gently slows pieces down without damaging the wood;
- Changes position according to production
- Aggressive belts leaves no mark on the wood



# SLOWDOWN BRUSH

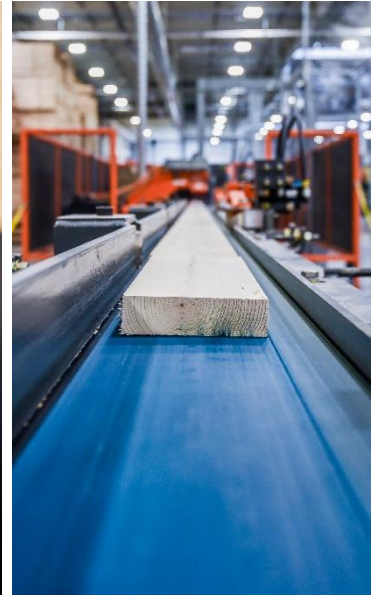


Can be installed on other brands of slowdown belts

- Gently slows down the boards without damaging them;
- Motorization of 5 HP;

# OUTFEED BELT

---

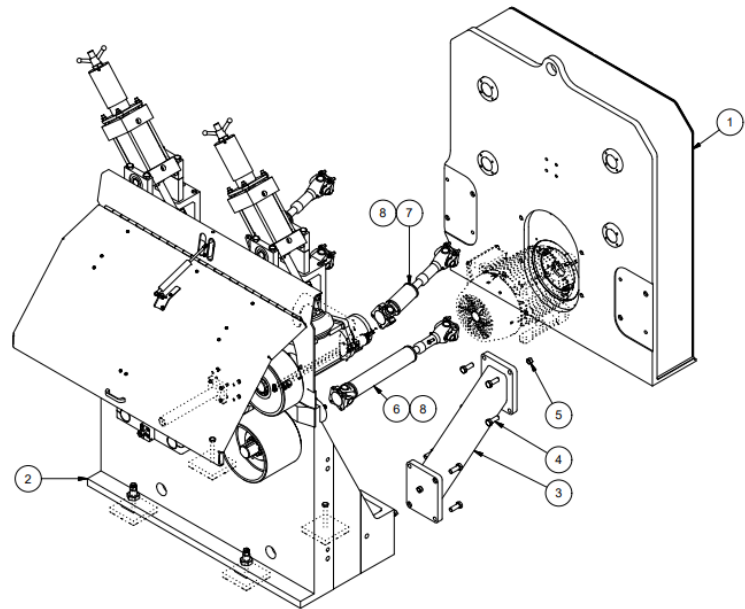


- Crowned and balanced tails and tensioning pulley
- Crowned, lagged and balanced drive pulley
- Guarding on both sides all along conveyor
- Safety guarding

# OUTFEED BRIDGE



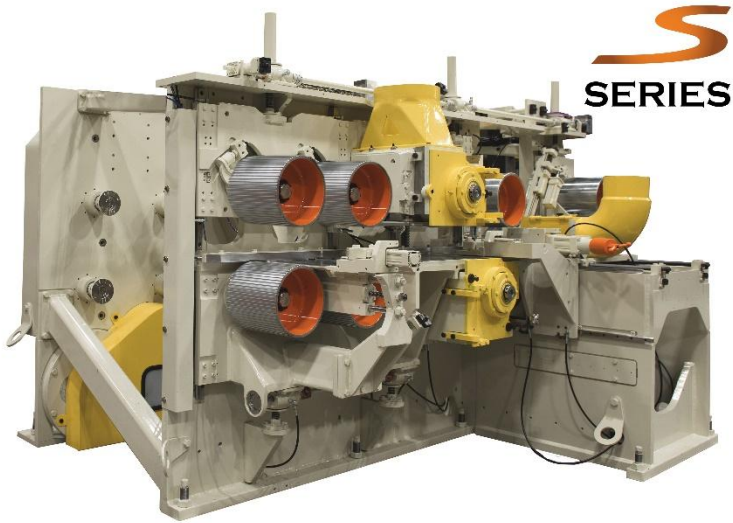
- Helps wood to transition between the planer and linear optimizer
- Same design as Gilbert Infeed bridge;
- Sturdy steel frame, stress relief for optimal resistance;
- Two to three top feed rolls per module
- Two to three bottom rolls the same size as top rolls;
- Heavy Duty variable angle main guide;
- One 30 HP motor to drive all rolls;
- Option for automatic width and automatic height adjustments;





# GILBERT'S LINE OF PLANERS

## GILBERT S-SERIES PLANER



## GILBERT 6 ROLL PLANER



## GILBERT HIGH SPEED PLANER



## GILBERT MOULDER PLANER



# GILBERT S-SERIES PLANER



- Smaller design for slower speeds and diversified value-added wood products like moulding, remanufacturing, finger jointing, cedar, pine and rip saw operations;
- Feed speeds from 300 up to 1800 ft/min (90 up to 550 m/min);
- 11 in. (275 mm) cutting circle cutterheads - Up to 26 knives per head;
- Compact design for installation into an existing layout.





# GILBERT MOULDER PLANER

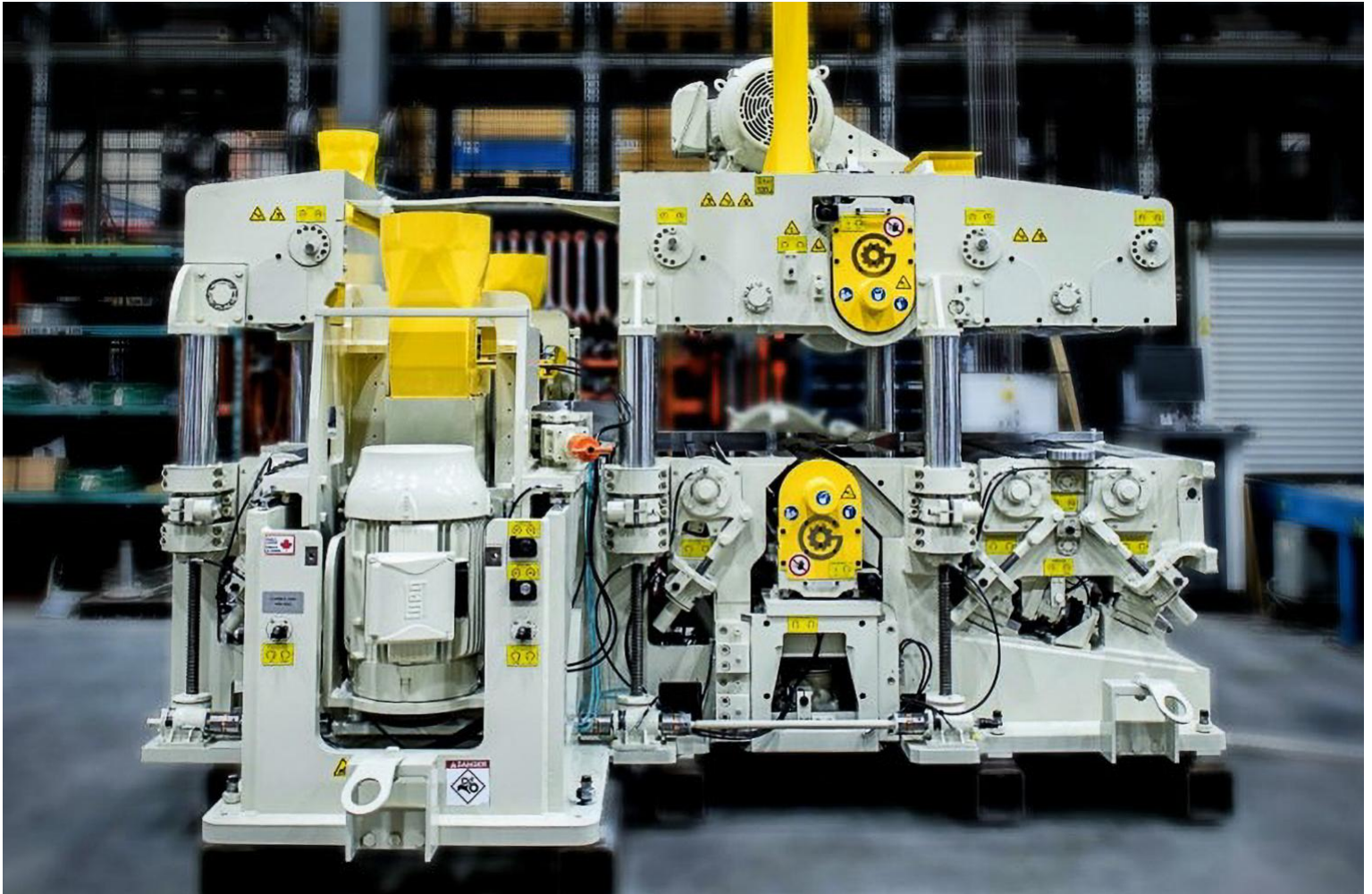


- Design for all speeds and needs;
- Extra cutterhead modules can be added to make all profiles and patterns;
- Versatile and heavy-duty machine for high quality results.





# GILBERT TIMBER POWER PLANER



## GILBERT'S NEW GLULAM PLANER

- Built for big timbers: Glulam, CLT, log cabin beams and more;
- Timber up to 16 in. high by 36 in. wide;
- Heavy duty frame.



# UPGRADE PARTS FOR YOUR GILBERT PLANER

---

FOR MORE INFORMATION, FEEL FREE TO CONTACT US.

Heidi Danbrook

Sales Manager

Office: 418.275.5041 #2231

Mobile: 418.630.4979

[Heidi.Danbrook@gilbert-tech.com](mailto:Heidi.Danbrook@gilbert-tech.com)

Sylvain Lefebvre

Sr. Sales Engineer

Office: 418.275.5041 #2223

Mobile: 418.671.3132

[Sylvain.Lefebvre@gilbert-tech.com](mailto:Sylvain.Lefebvre@gilbert-tech.com)

Jimmy Porter

Service and Parts Representative

Southeastern USA

Mobile: 850.830.1640

[Jimmy.Porter@gilbert-tech.com](mailto:Jimmy.Porter@gilbert-tech.com)

Larry Rabidue

Service and Parts Representative

Western Canada & USA

Mobile: 208.597.1683

[Larry.Rabidue@gilbert-tech.com](mailto:Larry.Rabidue@gilbert-tech.com)

Catherine Papillon

Sales Coordinator

Office: 418.275.5041 #2234

[Catherine.PapillonLaroche@gilbert-tech.com](mailto:Catherine.PapillonLaroche@gilbert-tech.com)