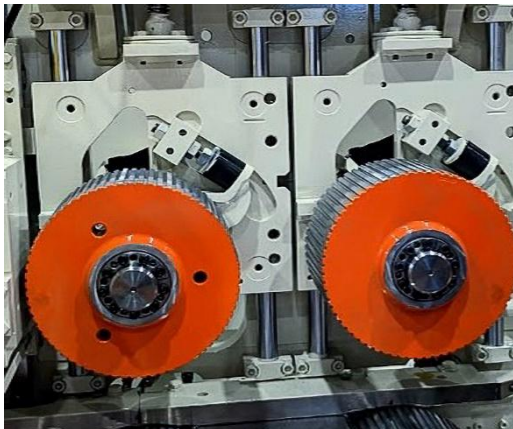


UPGRADE PARTS FOR YOUR S-SERIES PLANER

GILBERT

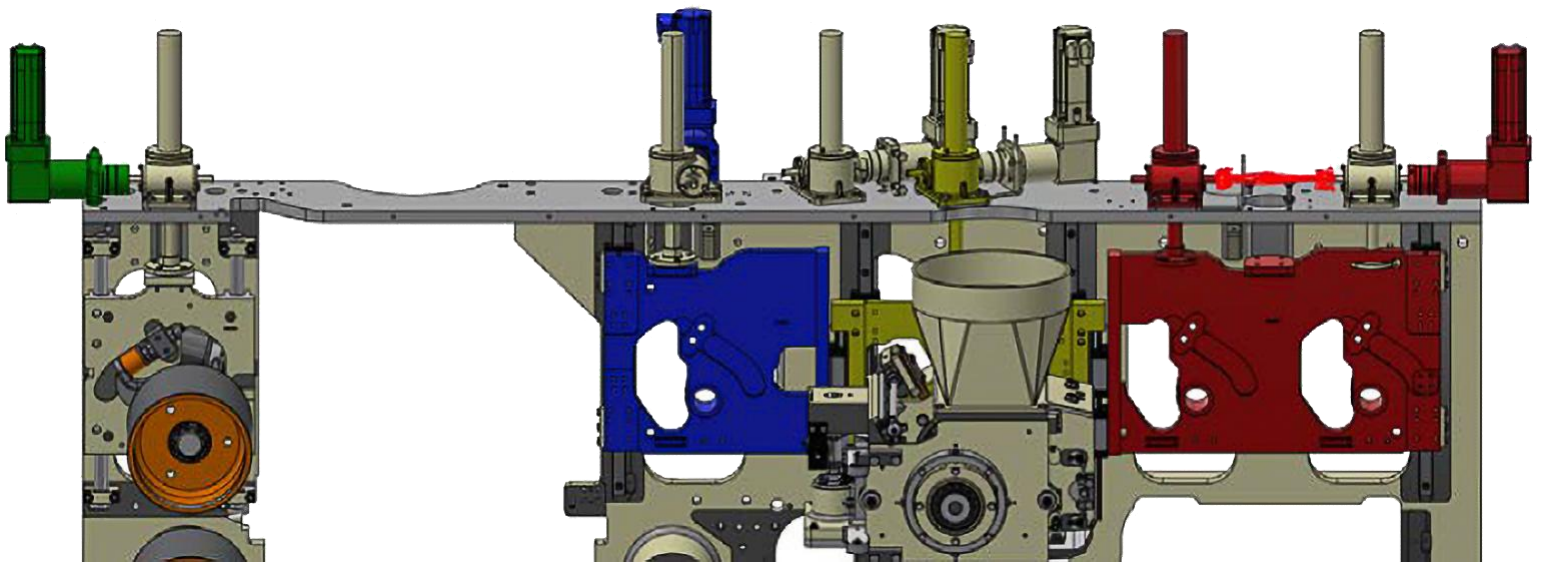


S-SERIES PLANER UPGRADES

Take advantage of Gilbert's state-of-the-art technology to upgrade your planer. Gilbert planer parts can be installed to increase planer productivity and efficiency.

- Independent Module for Top Rolls **(P. 3)**
- New Pins and Bushings on Chip Breakers **(P.4)**
- New locks for Chip Breaker pins **(P.5)**
- Automatic Options **(P.6)**
- Top Roll Shock Absorber **(P. 7)**
- Scraper on Outfeed Rolls **(P.8)**
- Retractable arm for Feed Table **(P.9)**
- Rolls **(P.10)**
- Cutterheads **(P. 11-12)**
- Side Head Jointer in Grinding Room **(P.13)**
- Temperature monitoring system **(P. 14)**
- Profile / Splitting Module **(P.15)**

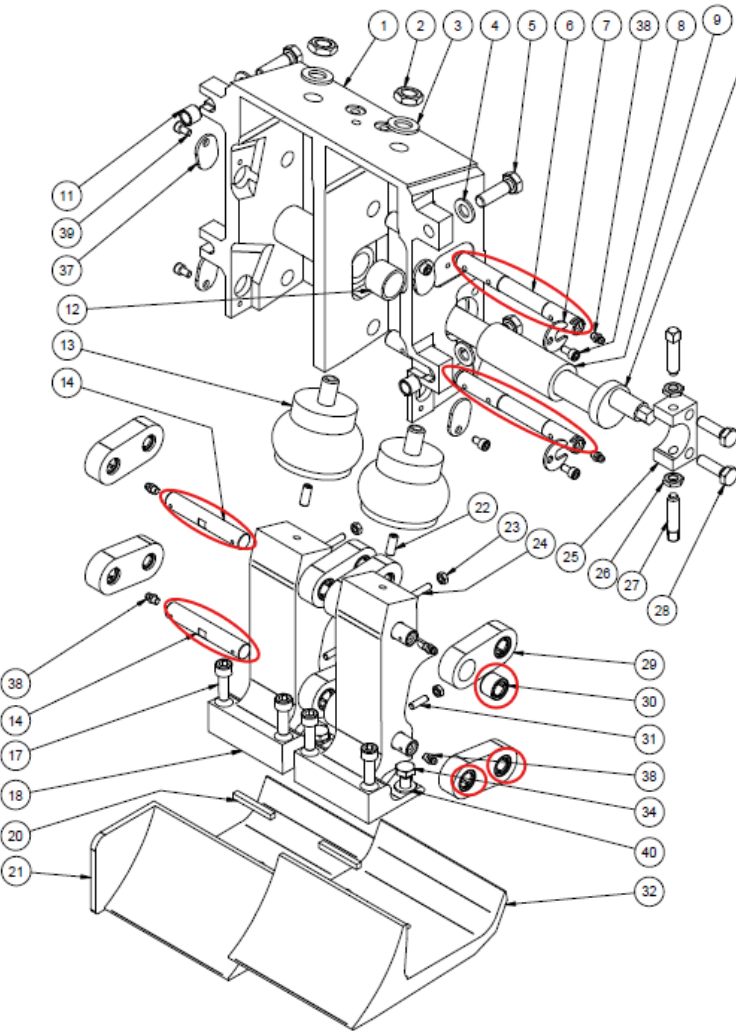
INDEPENDENT MODULE FOR TOP ROLLS



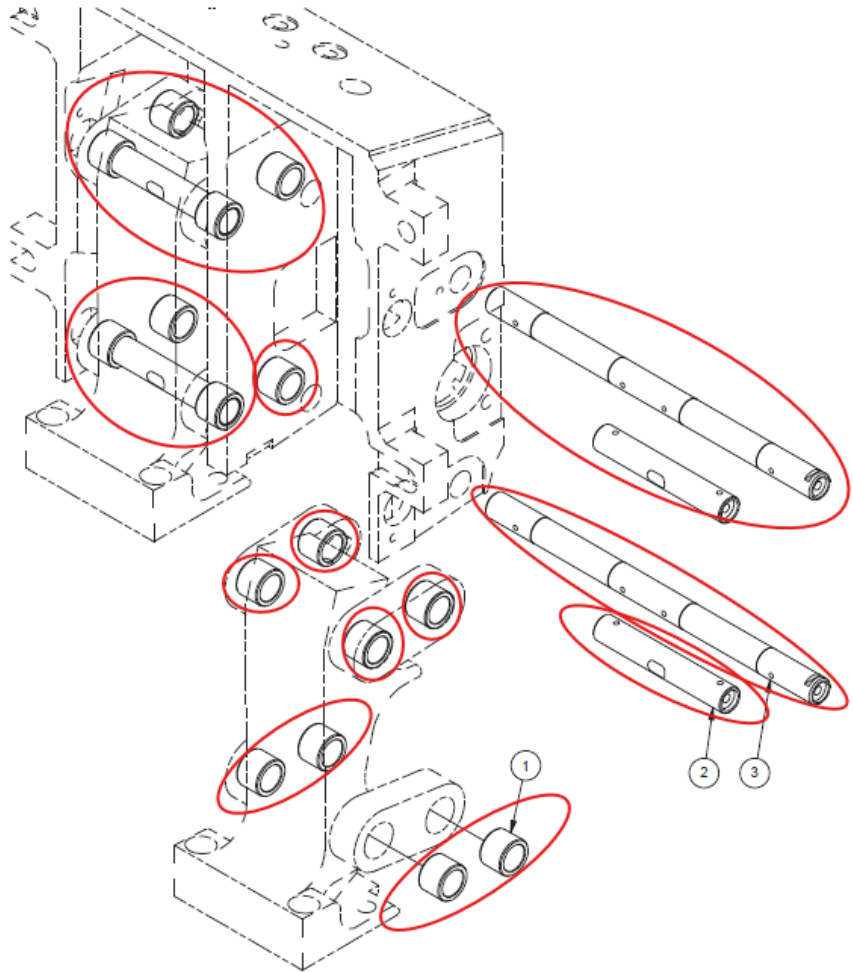
- Have separate adjustments for all top rolls on planer, feed table and bridge
- Infeed and outfeed can be completely separated another servomotor can be installed, one on the infeed one on the outfeed;
- Infeed rolls can be adjusted for rough lumber;
- Outfeed rolls can be adjusted lower for plane lumber.

NEW PINS AND BUSHINGS ON CHIP BREAKERS

ITEM	PART NO N° PIÈCE	QTY QTÉ	DESCRIPTION		COMMENTS COMMENTAIRES
1	0520023	16	COUSSINET 16mm X 22mm X 16mm	SLEEVE	
2	8304113	4	PIVOT	PIVOT	
3	8304114	2	PIVOT	PIVOT	



**Old design
(See circled parts)**



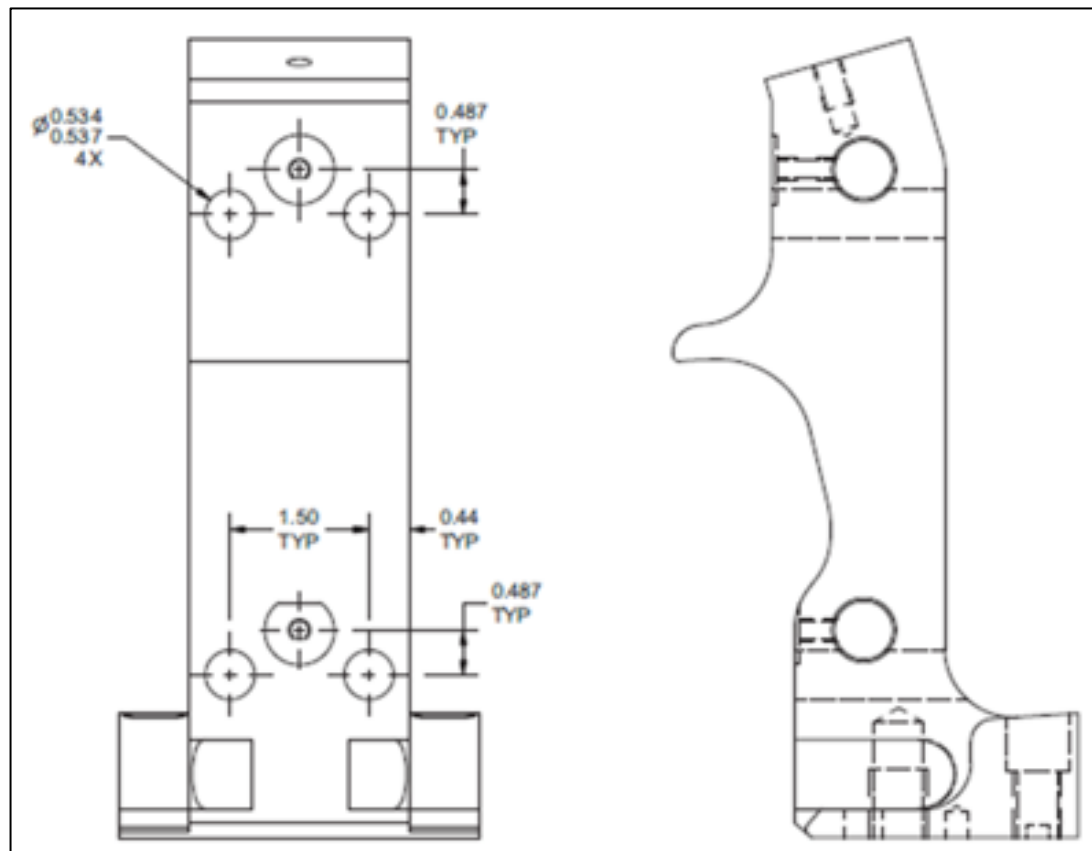
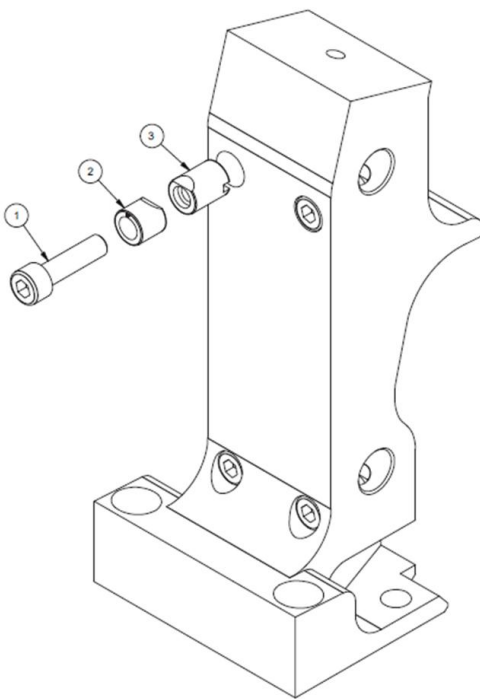
New design

- 3 times more resistant than the old ones

NEW LOCKS FOR CHIP BREAKER PINS

GILBERT

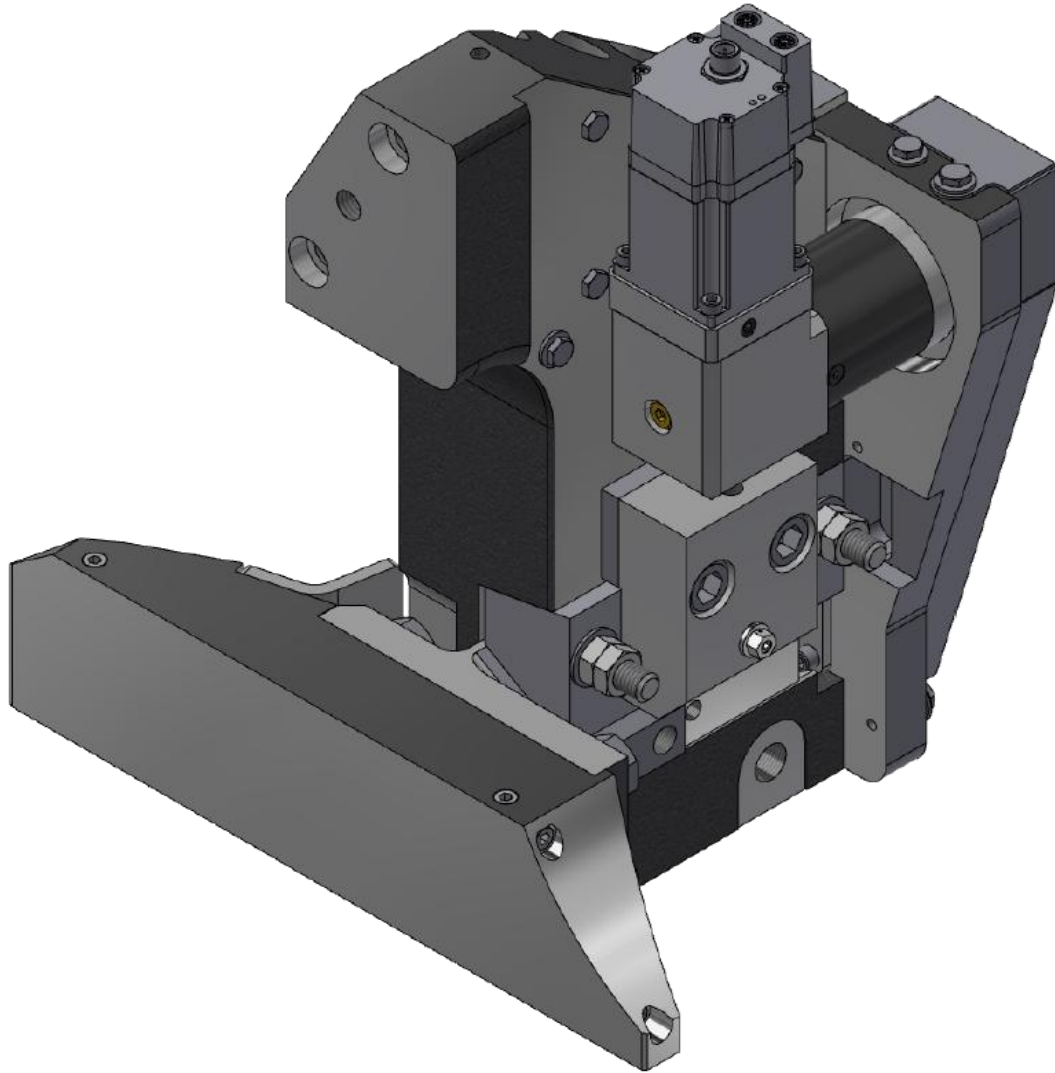
ITEM	PART NO N° PIÈCE	QTY QTÉ	DESCRIPTION	
1	0721661	4	BOULON CYL. M8 X 1.25 X 30	HEX. SOCKET CAP SCREW
2	8354303	4	DOUILLE DE SERRAGE TROUÉE	BUSHING
3	8354304	4	DOUILLE DE SERRAGE FILETÉE	THREADED BUSHING



- Customer must machine the arms themselves in order to carry out this modification

SEMI-AUTOMATIC ADJUSTMENT OF AFTER-CUT SHOES

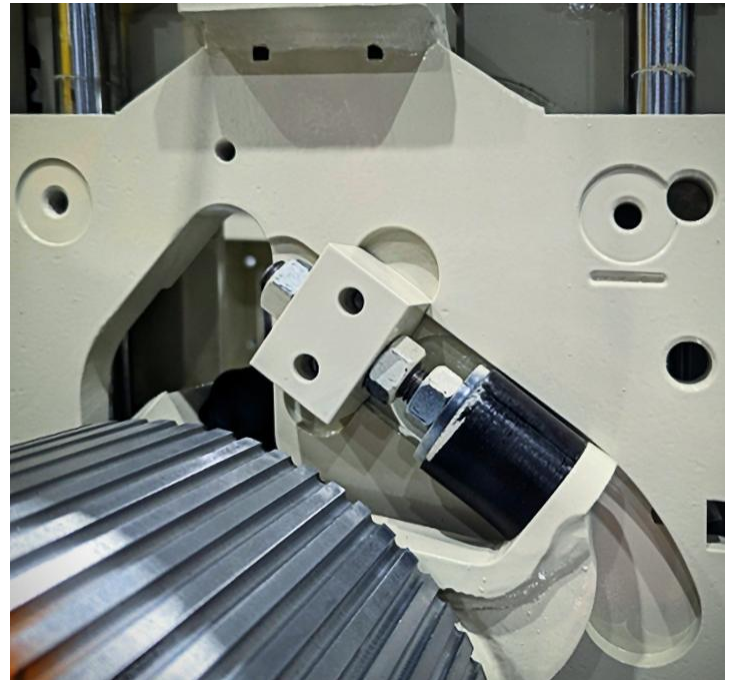
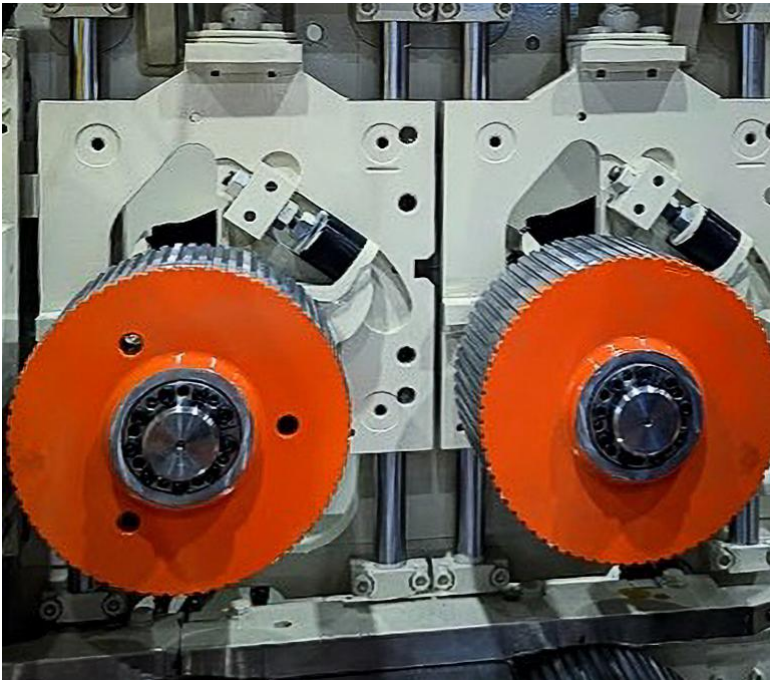
After-Cut Shoe



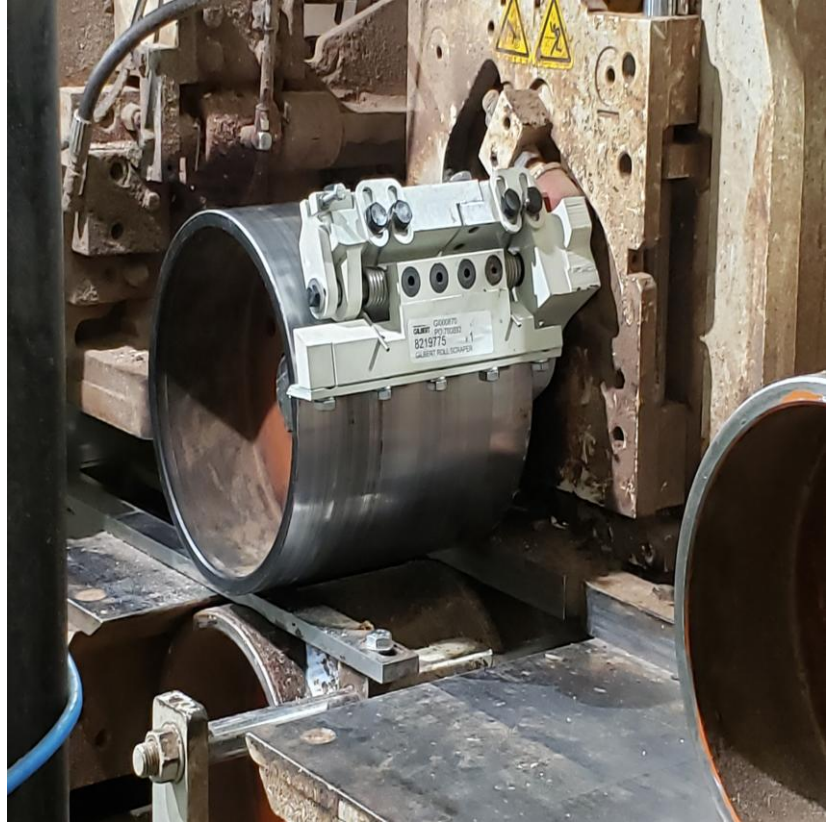
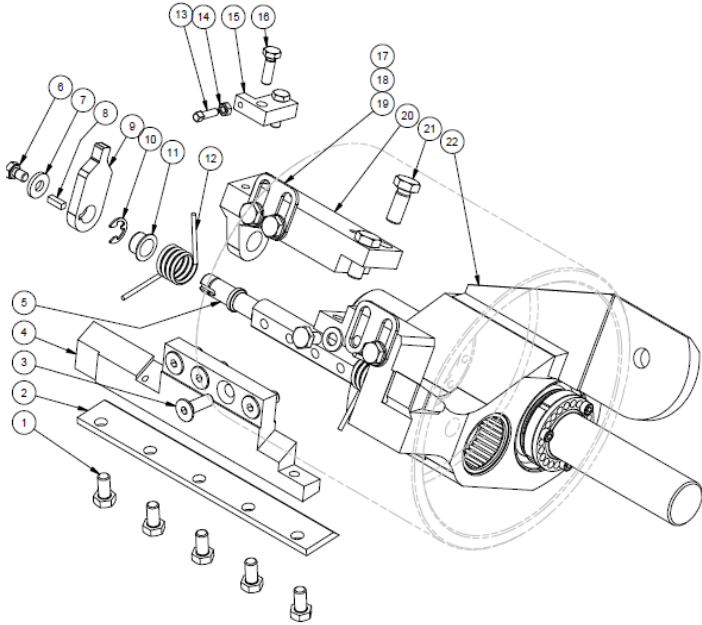
- Same automatic function as the pressure plate after the top head;
- Servo motor installed, and remote control;
- Right option to have if the automatic side head jointers are used;
- Joint the side heads outside the planer room. Then, adjust the after-cut shoe according to the new cutting circle, outside the planer room.

TOP ROLL SHOCK ABSORBER

- Design completely revised;
- Much better compression;
- Made of polyurethane;
- Duro 90.

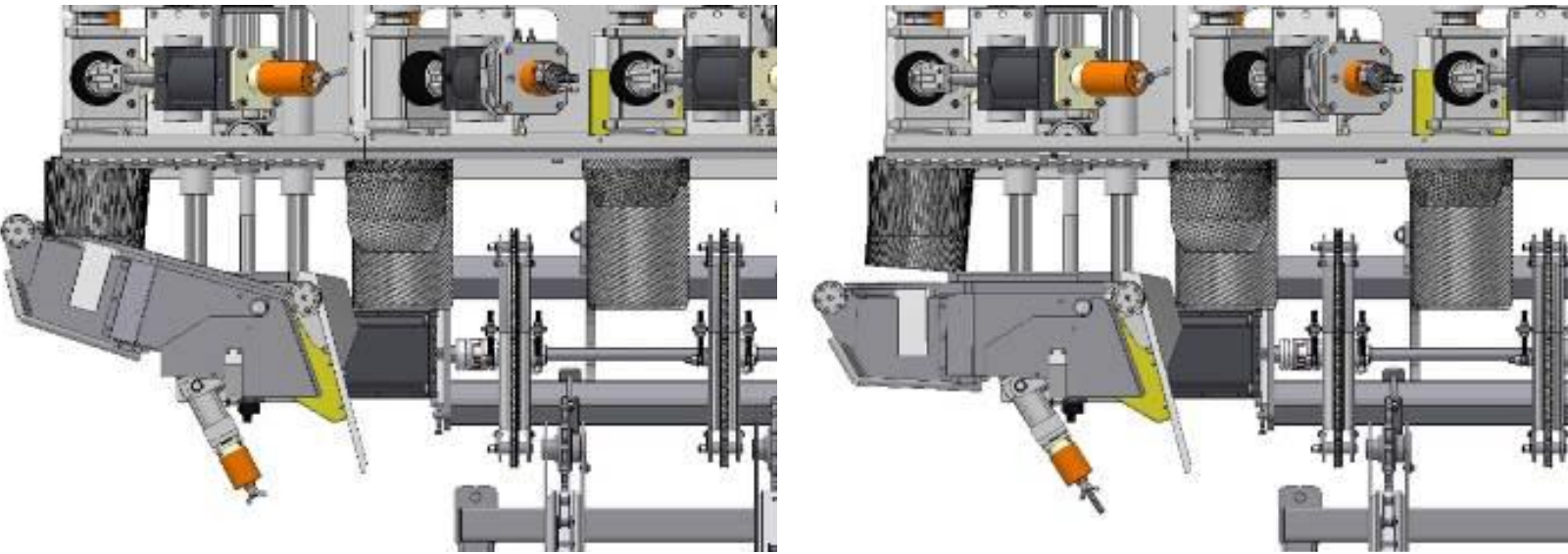


SCRAPER ON OUTFEED ROLLS



- Remove pitch off the planer outfeed rolls

RETRACTABLE ARM FOR FEED TABLE



Note: Picture may be different from description

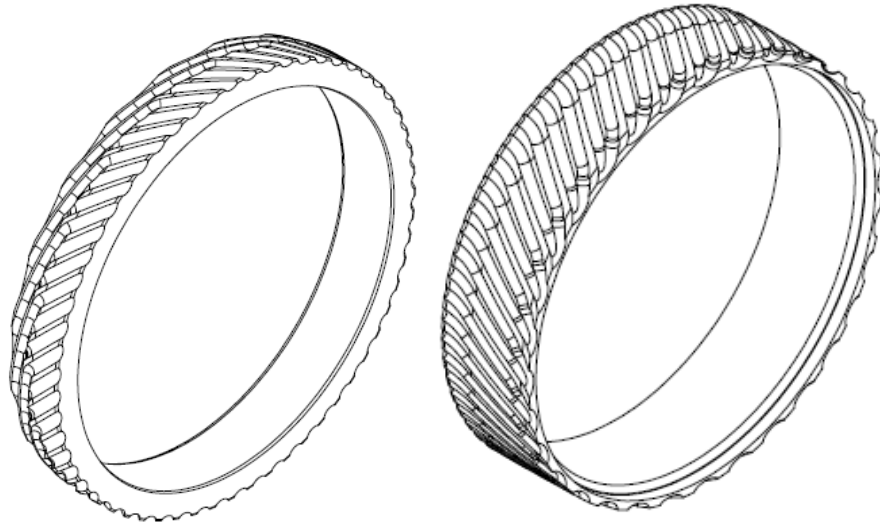
- Less jams in the planer;
- Will open up for different widths;
- Keep boards against the guide bar;
- Can open up when boards are wider than the required product (ex : 2x8, 8.25 product coming).

PINEAPPLES + ROLLS

Aggressive Bed Rolls, Pineapple Rolls and Infeed Rolls



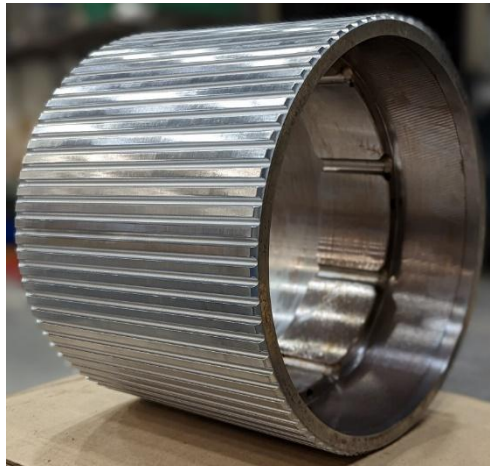
- Replaceable crowns available, same as Pineapples;
- Tungsten finish rather than chrome.



Knurled Finish

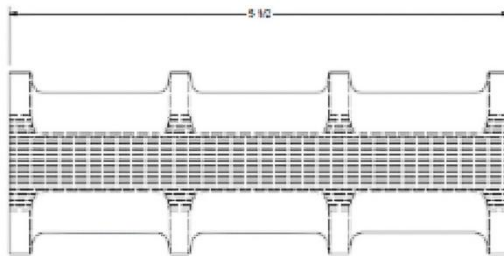
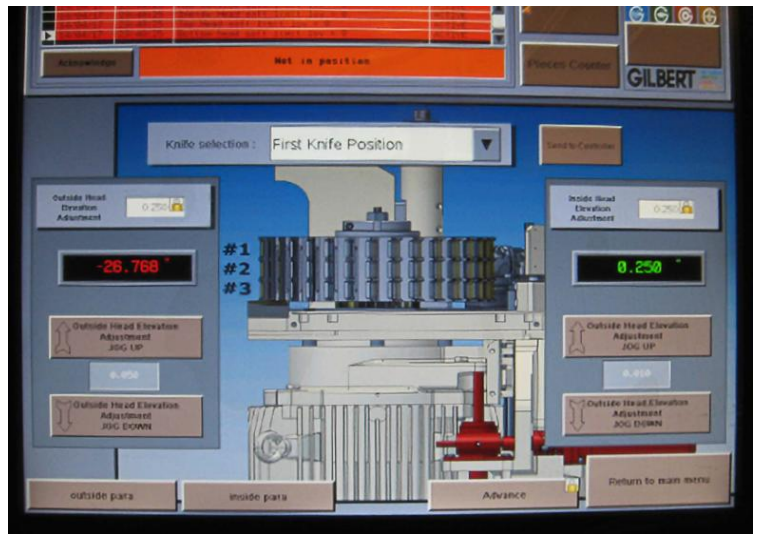
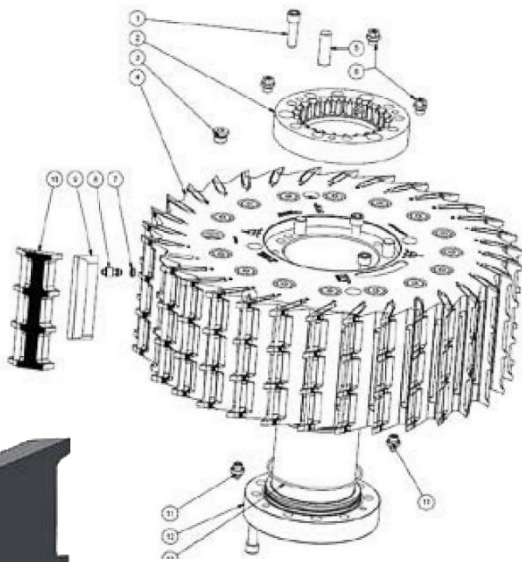
Grooved Finish

Sandblasted Finish



- Improves traction on infeed
- Increased uptime and productivity

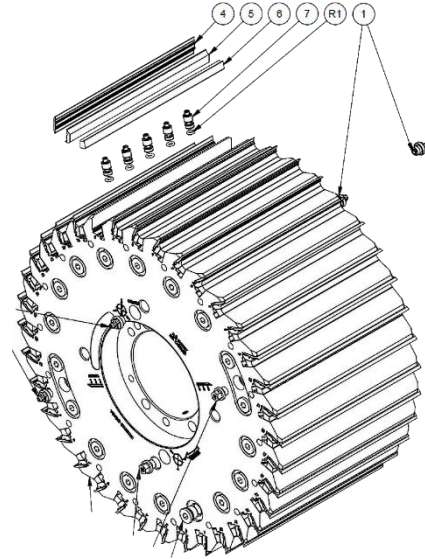
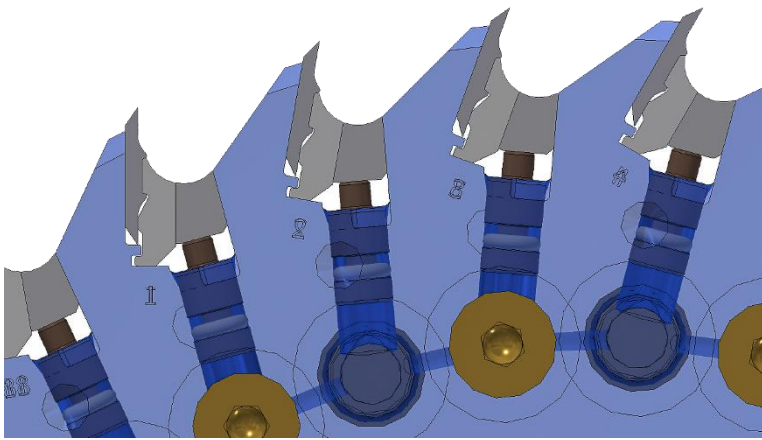
HYDRO-GRIP TRIPLE PATTERN SIDE HEADS



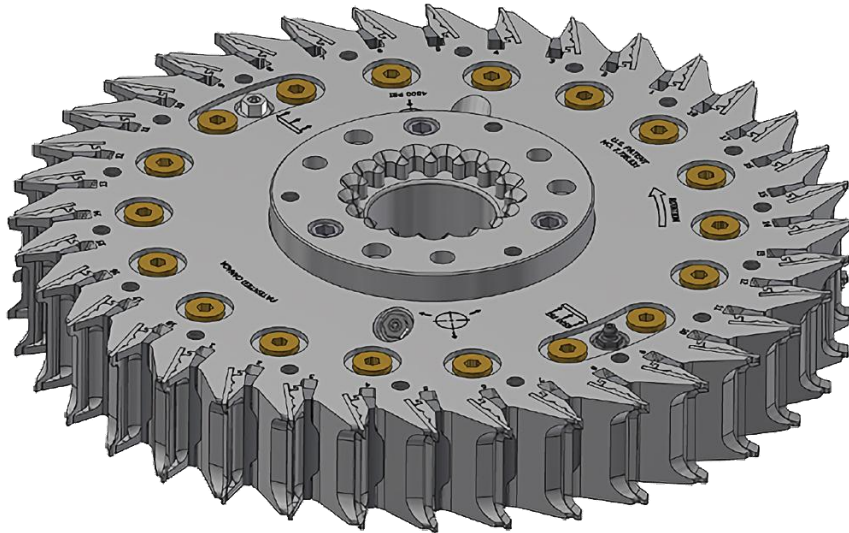
- 6 inch side head knives;
- The knives can have 3 or more patterns;
- Heads stay in the planer 3 times longer;
- Joint knives once all three patterns are worn;
- Knives are reversible & grindable.

KEY KNIFE CUTTERHEADS

Hydro-Grip Top and Bottom Heads with Key Knives

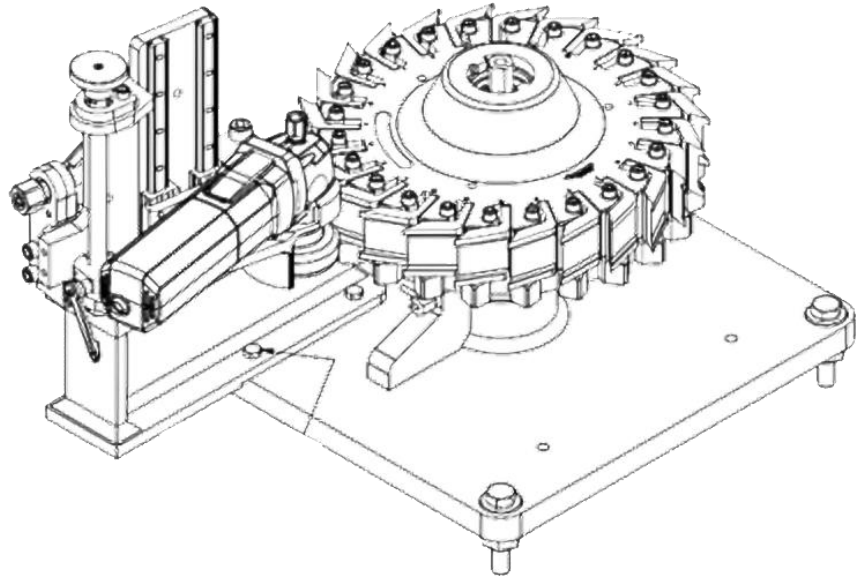


Hydro-Grip Side Heads with Key Knives

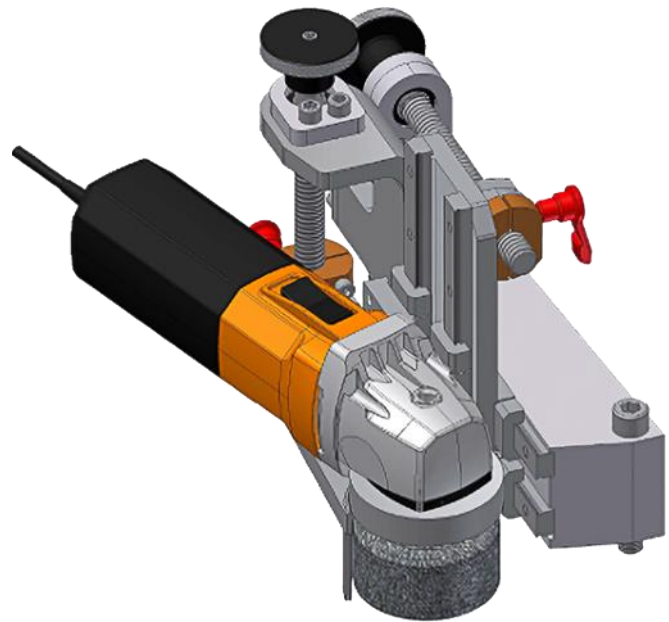


- Safer;
- All knives are mounted with a hydro-grip system;
- Time saved because there are no bolts to install;
- Long lasting on planer without changing;
- No grinder required.

SAFETY SIDE HEAD JOINTER IN GRINDING ROOM

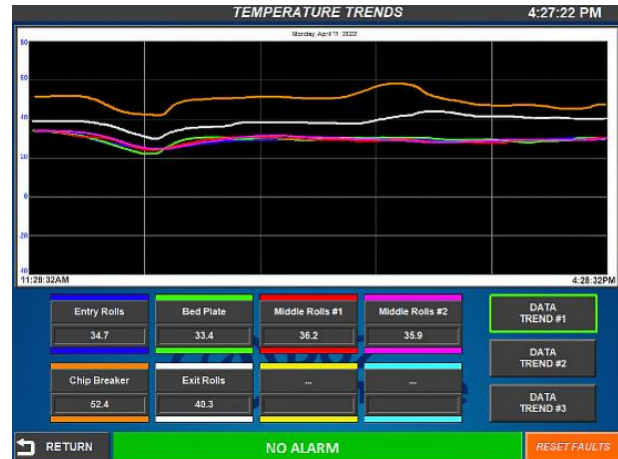
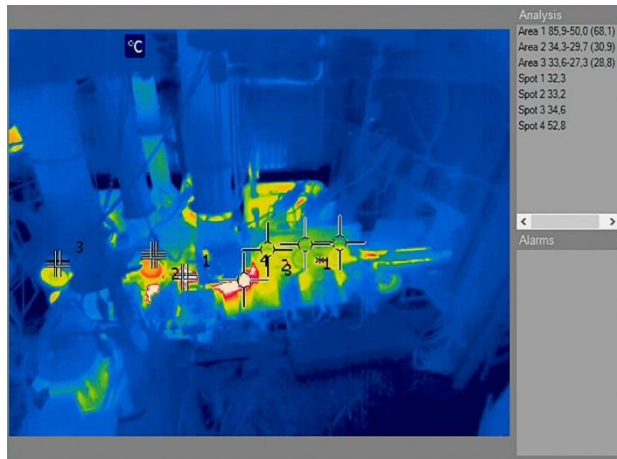


Instead of jointing directly on the planer, **it is possible to install the jig in the grinding room.** Joint the knives in the grinding room and install the heads in the planer afterwards.



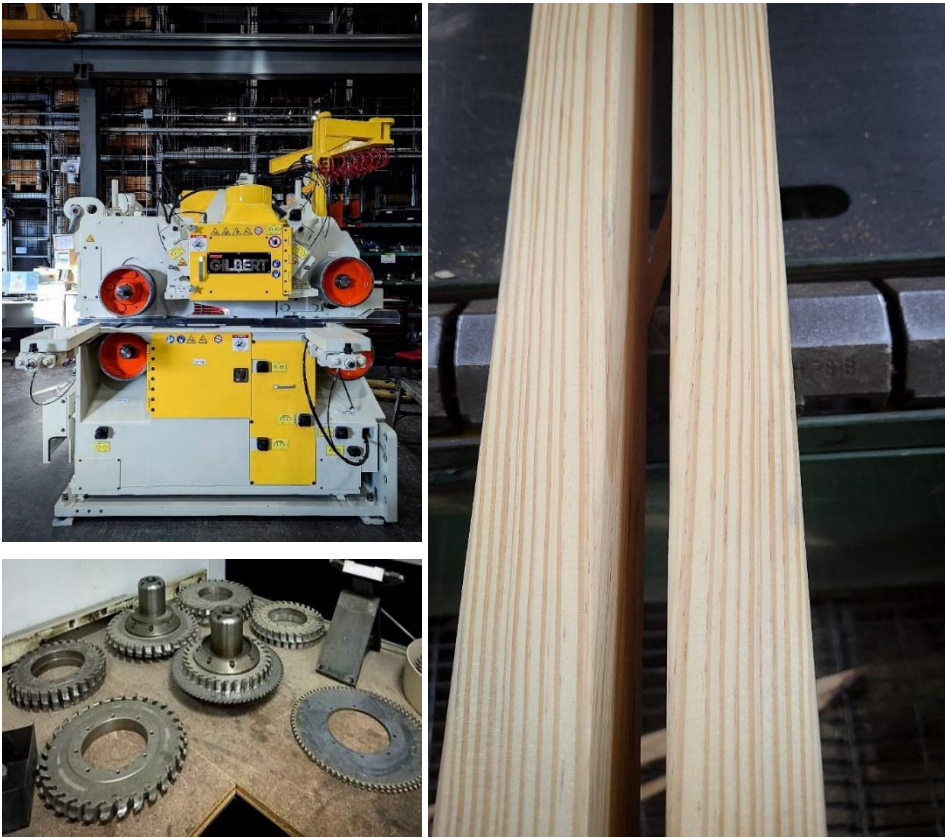
- Very precise set up;
- Keep perfect radius all the time;
- Reduced grinding time;
- Noticeably increased knife lifetime;
- Increase the quality of the finished wood;
- Very rapid payback on knives.

GILBERT PLANNER TEMPERATURE MONITORING SYSTEM TO PREVENT FIRES OR OVERHEATING



- Thermal imaging cameras (FLIR) to monitor hotspots;
- Prevents overheating and premature wear;
- Includes a 15" touchscreen, mini-computer, thermal cameras & audiovisual alert;
- Programmable for a specific spot or a zone e.g : guide bar or bed plate;
- Can be entirely stand-alone or connected to the mill PLC;
- Provides temperature graphs (°C or °F) in real-time readings and keeps a 24h history;
- Fire hazard is now much more controlled.

PROFILE / SPLITTING MODULE CAN BE RETROFITTED TO EXISTING PLANERS



Time to split, time to profit

- The module can be attached to a planer or on an independent production line.
- The module can be attached to a planer or on an independent production line.
- Module to make special profiles or to split lumber in two or three pieces;
- Feed speeds up to 1800 ft/min (550 m/min);
- It operates with the same Hydro-Grip system as used on Gilbert planers;
- Any type of splitting or profiling tools can be installed;
- Can be retro fitted to existing planers.



UPGRADE PARTS FOR YOUR GILBERT PLANER

FOR MORE INFORMATION, FEEL FREE TO CONTACT US.

Heidi Danbrook

Sales Manager

Office: 418.275.5041 #2231

Mobile: 418.630.4979

Heidi.Danbrook@gilbert-tech.com

Sylvain Lefebvre

Sr. Sales Engineer

Office: 418.275.5041 #2223

Mobile: 418.671.3132

Sylvain.Lefebvre@gilbert-tech.com

Jimmy Porter

Service and Parts Representative

Southeastern USA

Mobile: 850.830.1640

Jimmy.Porter@gilbert-tech.com

Larry Rabidue

Service and Parts Representative

Western Canada & USA

Mobile: 208.597.1683

Larry.Rabidue@gilbert-tech.com

Catherine Papillon

Sales Coordinator

Office: 418.275.5041 #2234

Catherine.PapillonLaroche@gilbert-tech.com