

GILBERT



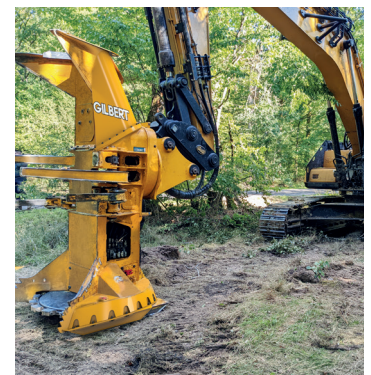
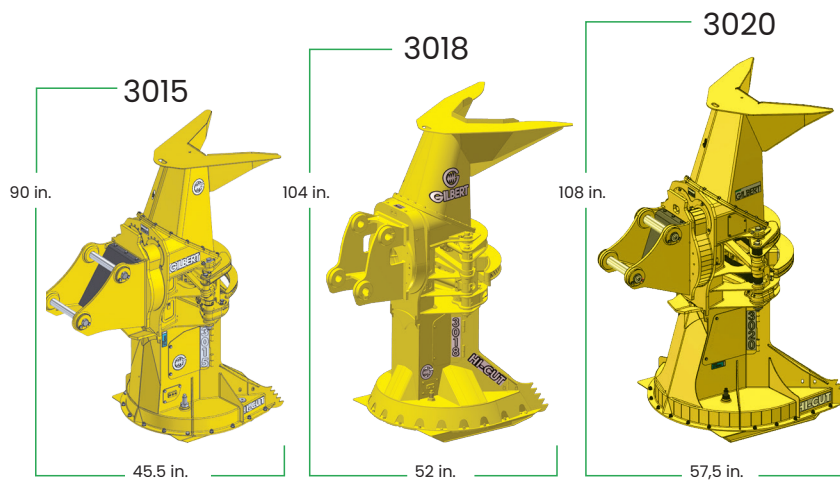
Our felling heads

gilbert-tech.com

The most productive excavator mounted saw head

Gilbert has added a new range of excavator felling heads to its line of forestry equipment, developed in Canada 30 years ago. This new range is optimized for small forest management, biomass and energy renewal operations. In addition to its lower cost, it has the advantage of being easy to install and move with the excavator in smaller territories and spaces.

Ideal for
15 to 25 ton
excavators



TECHNICAL SPECIFICATIONS

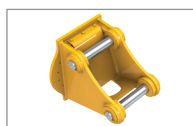
MODEL	3015	3018	3020
Cutting capacity (In/mm)	14/35.56	18/45.7	20/50.8
Saw Disc diameter (In/mm)	36/91.4	45/114.3	50/127.0
Accumulation capacity (P ² /m ²)	2.1/0.19	3.4/0.28	4.07/0.38
Throat opening (In/mm)	29,6 / 66	35.4/89.9	52.5/133.4
Rotation (°)	300°	300°	300°
Teeth kerf (In/mm)	2/50.8	2/50.8	2/50.8
Head weight (lbs/kg)	3040/1385	4300/1940	4500/2045
Excavator size class (t)	15 to 20 t.	18 to 25 t.	18 to 25 t.

HYDRAULIC REQUIREMENTS

Oil Flow (L/gpm)	106 L/28	151L/40	151L/40
Operating pressure (bar/psi)	310/4500	275/4000	310/4500
Control distribution bloc	Integrated	Integrated	Integrated

*These specifications are subject to change without notice.

Supplied
for the
installation



Mounting bracket



Joystick control kit



electrical harness

Mounting
bracket

EXCAVATOR ITEMS REQUIRED

High flow pressure line

Return line

Case Drain line

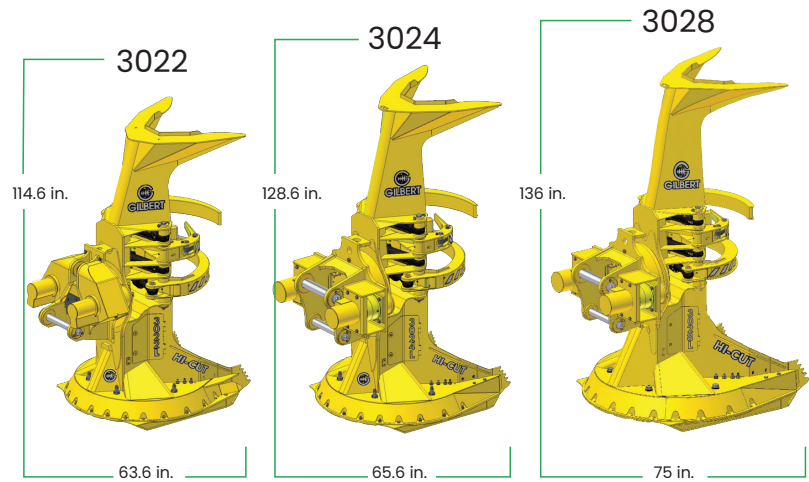


For feller bunchers

gilbert-tech.com

Increase your productivity

Imagine all trees stacked perfectly with one head, in one operation, all at once. Imagine a felling head that does it all. Increase your productivity with a felling head offering an above standard accumulation and an impeccable grouping of trees. Intended for a full range of logging operations, the 3000L Series is available in 21.5, 23 and 27.5 in. in cutting size with the most recognized high rotation wrists in the industry.

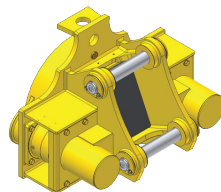


TECHNICAL SPECIFICATIONS

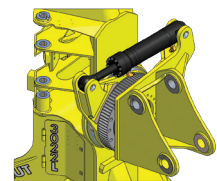
MODEL	3022	3024	3028
Cutting capacity (In/mm)	21.5/54.6	23/58.4	27.5/70.6
Saw Disc diameter (In/mm)	53/134.6	56/142.2	66/167.6
Accumulation capacity (P ² /m ²)	4.64/0.43	5/0.47	6.3/0.59
Throat opening (In/mm)	40.7/103.4	41.8/106.2	42.3/107.4
Rotation (°)	300°	300°	300°
Teeth kerf (In/mm)	2/50.8	2/50.8	2/50.8
Head weight (lbs/kg)	6500/2955	7550/3431	8300/3773
High Rotation wrist 40°	5800/2636	7000/3182	7800/3545

*These specifications are subject to change without notice.

Standard
300 degree
wrist



Optional 40
degree wrist



Features and benefits

- ✓ The innovative geometry allows an accumulation of more trees in tight, straight bunches without breaking any stems, no matter the sizes.
- ✓ The heavy duty design ensures maximum performance in hard wood as well as in multi-stem wood.
- ✓ Gilbert unique and exclusive saw stops protect the saw drive system and the saw disc against impact and gyroscopic deflection which increases the lifetime.
- ✓ The powerful 350 degree wrist is strong enough to handle any size of timber
- ✓ The unique conical base is designed to facilitate clearance for fast saw recovery. (3022 to 3028 models)
- ✓ Gilbert bolted saw drive system allows easy maintenance and increases uptime. The access to hydraulic components is easy for safe and fast maintenance. (3022 to 3028 models)
- ✓ The wide front throat opening accommodates butt flare.
- ✓ Easy access to hydraulic components enables fast, safe maintenance.
- ✓ The Gilbert head's agility ensures that bunches are optimized for the skidder, saving time.

